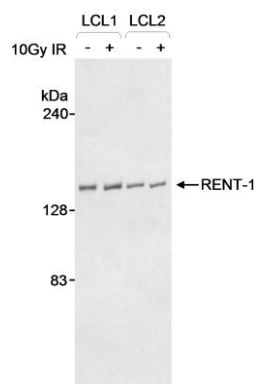


Detection of human and mouse RENT1 by western blot.
Samples: Whole cell lysate (50 µg) from HeLa and mouse NIH 3T3 cells prepared using NETN lysis buffer. *Antibody:* Affinity purified goat anti-RENT1 antibody A300-036A (lot A300-036A-1) used for WB at 0.4 µg/ml. *Detection:* Chemiluminescence with an exposure time of 30 seconds.



Detection of human RENT-1 by western blot. *Samples:* Whole cell lysate (30 µg) from lymphoblastoid cell lines (EBV-immortalized B-cell from a normal individual). *Antibody:* Affinity purified goat anti-RENT-1 antibody A300-036A used at 1 µg/ml. *Detection:* Chemiluminescence.