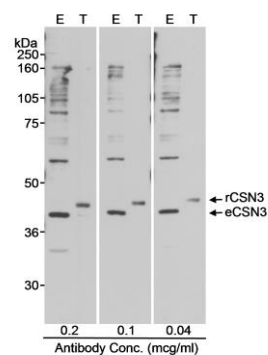


**Detection of human CSN3 by western blot. Samples:** Whole cell lysate (50  $\mu$ g) from HeLa and HEK293T cells prepared using NETN lysis buffer. **Antibodies:** Affinity purified rabbit anti-CSN3 antibody A300-029A (lot A300-029A-1) used for WB at 0.05  $\mu$ g/ml. **Detection:** Chemiluminescence with an exposure time of 3 minutes.



**Detection of human CSN3 by western blot. Samples:** Whole cell lysate (50  $\mu$ g – E; 10  $\mu$ g – T) from mock transfected (E) or CSN3 transfected (T) HEKHEK293T cells. **Antibody:** Affinity purified rabbit anti-CSN3 A300-029A used at the indicated concentration. **Detection:** Chemiluminescence with a 10 second exposure.