

MSH6 Antibody

Goat Polyclonal

Antigen Affinity Purified

Protein ID NP_000170.1

Catalog No. A300-022A

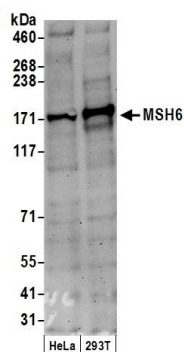
GeneID 2956

Lot No. A300-022A-2

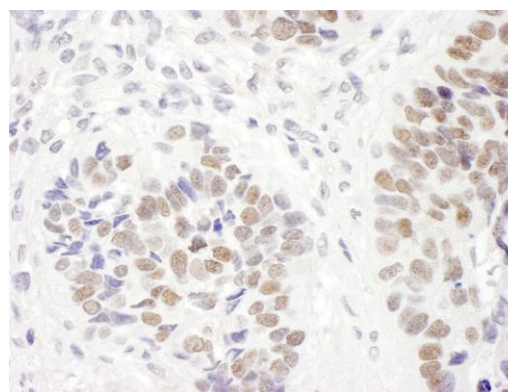


| | | | | | | | |
|------------------------------|--|--------------|-------------------|---------------------|-----------------|----------------------|--|
| APPLICATIONS | WB, IHC | | | | | | |
| SPECIES REACTIVITY | Human | | | | | | |
| AMOUNT | 100 µl | | | | | | |
| CONCENTRATION | 1000 µg/ml | | | | | | |
| STORAGE/SHELF LIFE | 2 - 8° C / 1 year from date of receipt | | | | | | |
| PHYSICAL STATE | Liquid | | | | | | |
| BUFFER | Tris-citrate/phosphate buffer, pH 7 to 8 containing 0.09% Sodium Azide | | | | | | |
| ISOTYPE | IgG | | | | | | |
| ORIGIN | USA | | | | | | |
| PRODUCTION PROCEDURES | <p>Antibody was affinity purified using an epitope specific to MSH6 immobilized on solid support.</p> <p>The epitope recognized by A300-022A maps to a region between residues 350 and 400 of human MutS homolog 6 using the numbering given in entry NP_000170.1 (GeneID 2956).</p> <p>Immunoglobulin concentration was determined by extinction coefficient: absorbance at 280 nm of 1.4 equals 1.0 mg of IgG.</p> | | | | | | |
| APPLICATIONS | <p>Centrifuge tube to remove product from lid. Optimal working dilutions should be determined experimentally by the investigator. Prepare working dilution immediately before use.</p> <table><tr><td>Western Blot</td><td>1:1,000 - 1:5,000</td></tr><tr><td>Immunoprecipitation</td><td>Not recommended</td></tr><tr><td>Immunohistochemistry</td><td>1:250 - 1:1,000. Epitope retrieval with citrate buffer pH 6.0 is recommended for FFPE tissue sections.</td></tr></table> | Western Blot | 1:1,000 - 1:5,000 | Immunoprecipitation | Not recommended | Immunohistochemistry | 1:250 - 1:1,000. Epitope retrieval with citrate buffer pH 6.0 is recommended for FFPE tissue sections. |
| Western Blot | 1:1,000 - 1:5,000 | | | | | | |
| Immunoprecipitation | Not recommended | | | | | | |
| Immunohistochemistry | 1:250 - 1:1,000. Epitope retrieval with citrate buffer pH 6.0 is recommended for FFPE tissue sections. | | | | | | |
| APPLICATION NOTES | Western blot of lysates performed using standard western blot reagents and 4-8% SDS-PAGE. | | | | | | |
| IHC HUMAN CONTROLS | Metastatic Lymph Node, Non-Small Cell Lung Cancer, Prostate Carcinoma, Small Cell Lung Cancer, Testicular Seminoma | | | | | | |
| ADDITIONAL INFO | <p>https://www.bethyl.com/product/A300-022A</p> <p>Use the link above to view SDS, a current list of citations, and other product specific information.</p> | | | | | | |

This document certifies that this product has met all of the quality control standards defined by Bethyl Laboratories, Inc.
Eric McIntush, PhD | Chief Scientific Officer Date: June 21, 2019



Detection of human MSH6 by western blot. *Samples:* Whole cell lysate (50 μ g) from HeLa and HEK293T cells prepared using NETN lysis buffer. *Antibody:* Affinity purified goat anti-MSH6 antibody A300-022A (lot A300-022A-2) used for WB at 0.5 μ g/ml. *Detection:* Chemiluminescence with an exposure time of 3 minutes.



Detection of human MSH6 by immunohistochemistry. *Sample:* FFPE section of human non-small cell lung cancer. *Antibody:* Affinity purified goat anti-MSH6 (Cat. No. A300-022A lot 2) used at a dilution of 1:500 (2 μ g/ml). *Detection:* DAB