

GTF2I/TFII-I Antibody

Rabbit Polyclonal

Antigen Affinity Purified

Protein ID NP_127492.1

Catalog No. A300-018A

GeneID 2969

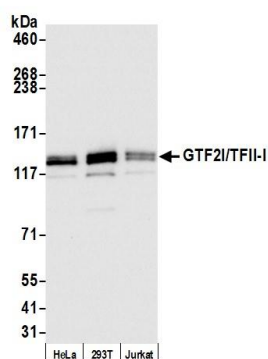
Lot No. A300-018A-2



APPLICATIONS	WB, IP, IHC						
SPECIES REACTIVITY	Human, Mouse						
PRESUMED REACTIVITY	Based on 100% sequence identity, this antibody is predicted to react with Rat						
AMOUNT	100 µl						
CONCENTRATION	1000 µg/ml						
STORAGE/SHELF LIFE	2 – 8° C / 1 year from date of receipt						
PHYSICAL STATE	Liquid						
BUFFER	Tris-citrate/phosphate buffer, pH 7 to 8 containing 0.09% Sodium Azide						
ISOTYPE	IgG						
ORIGIN	USA						
PRODUCTION PROCEDURES	<p>Antibody was affinity purified using an epitope specific to GTF2I/TFII-I immobilized on solid support.</p> <p>The epitope recognized by A300-018A maps to a region between residue 950 and the C-terminus (residue 998) of human general transcription factor II-I using the numbering given in entry NP_127492.1 (GeneID 2969).</p> <p>Immunoglobulin concentration was determined by extinction coefficient: absorbance at 280 nm of 1.4 equals 1.0 mg of IgG.</p>						
APPLICATIONS	<p>Centrifuge tube to remove product from lid. Optimal working dilutions should be determined experimentally by the investigator. Prepare working dilution immediately before use.</p> <table><tr><td>Western Blot</td><td>1:1,000 – 1:10,000</td></tr><tr><td>Immunoprecipitation</td><td>2 – 10 µg/mg lysate</td></tr><tr><td>Immunohistochemistry</td><td>1:1,000 to 1:5,000. Epitope retrieval with citrate buffer pH6.0 is recommended for FFPE tissue sections.</td></tr></table>	Western Blot	1:1,000 – 1:10,000	Immunoprecipitation	2 – 10 µg/mg lysate	Immunohistochemistry	1:1,000 to 1:5,000. Epitope retrieval with citrate buffer pH6.0 is recommended for FFPE tissue sections.
Western Blot	1:1,000 – 1:10,000						
Immunoprecipitation	2 – 10 µg/mg lysate						
Immunohistochemistry	1:1,000 to 1:5,000. Epitope retrieval with citrate buffer pH6.0 is recommended for FFPE tissue sections.						
APPLICATION NOTES	Western blot of lysates performed using standard western blot reagents and 4–8% SDS-PAGE.						
IHC HUMAN CONTROLS	Breast Carcinoma, Colon Carcinoma, Ovarian Carcinoma, Prostate Carcinoma, Testicular Seminoma						
ADDITIONAL INFO	<p>https://www.bethyl.com/product/A300-018A</p> <p>Use the link above to view SDS, a current list of citations, and other product specific information.</p>						

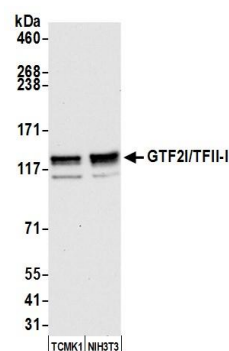
This document certifies that this product has met all of the quality control standards defined by Bethyl Laboratories, Inc.
Eric McIntush, PhD | Chief Scientific Officer

Date: December 30, 2019

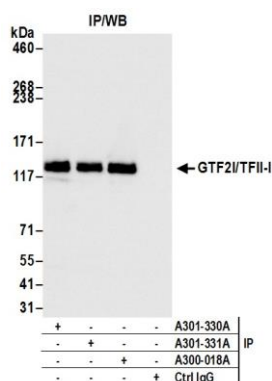
**Detection of human GTF2I/TFII-I by western blot.**

Samples: Whole cell lysate (10 µg) from HeLa, HEK293T, and Jurkat cells prepared using NETN lysis buffer.

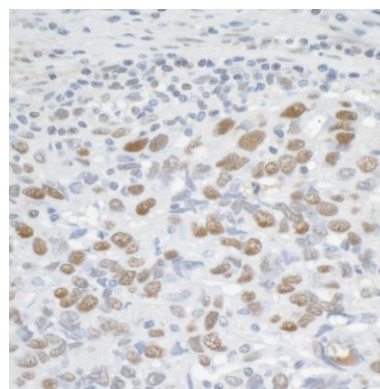
Antibody: Affinity purified rabbit anti-GTF2I/TFII-I antibody A300-018A (lot A300-018A-2) used for WB at 0.04 µg/ml. **Detection:** Chemiluminescence with an exposure time of 3 seconds.

**Detection of mouse GTF2I/TFII-I by western blot.**

Samples: Whole cell lysate (10 µg) from TCMK-1 and NIH 3T3 cells prepared using NETN lysis buffer. **Antibody:** Affinity purified rabbit anti-GTF2I/TFII-I antibody A300-018A (lot A300-018A-2) used for WB at 0.04 µg/ml. **Detection:** Chemiluminescence with an exposure time of 10 seconds.

**Detection of human GTF2I/TFII-I by western blot of immunoprecipitates.**

Samples: Whole cell lysate (1.0 mg per IP reaction; 20% of IP loaded) from HeLa cells prepared using NETN lysis buffer. **Antibodies:** Affinity purified rabbit anti-GTF2I/TFII-I antibody A300-018A (lot A300-018A-2) used for IP at 6 µg per reaction. GTF2I/TFII-I was also immunoprecipitated by rabbit anti-GTF2I/TFII-I antibodies (A301-330A, A301-331A). For blotting immunoprecipitated GTF2I/TFII-I, A300-018A was used at 0.04 µg/ml. **Detection:** Chemiluminescence with an exposure time of 1 second.

**Detection of human GTF2I/TFII-I by immunohistochemistry.**

Sample: FFPE section of human breast carcinoma. **Antibody:** Affinity purified rabbit anti-GTF2I/TFII-I (Cat. No. A300-018A lot 2) used at a dilution of 1:5,000 (0.2 µg/ml). **Detection:** DAB