

Phospho BRCA1 (S1189) Antibody

Rabbit Polyclonal

Antigen Affinity Purified	RefSeq ID	NP_009225.1
Catalog No. A300-003A	Uniprot ID	P38398
Lot No. 2	GeneID	672

APPLICATIONS	WB
SPECIES REACTIVITY	Human
AMOUNT	100 µl
CONCENTRATION	1000 µg/ml
STORAGE/SHELF LIFE	2 – 8°C / 1 year from date of receipt
PHYSICAL STATE	Liquid
BUFFER	Tris-citrate/phosphate buffer, pH 7 to 8 containing 0.09% Sodium Azide
ISOTYPE	IgG
ORIGIN	USA
PRODUCTION PROCEDURES	Antibody was affinity purified using an epitope specific to Phospho BRCA1 (S1189) immobilized on solid support.

Immunogen for A300-003A was a phosphorylated synthetic peptide, which represented a portion of human Breast Cancer Gene 1 (GeneID 672) around serine 1189 according to the numbering given in entry NP_009225.1.

Immunoglobulin concentration was determined using Beer's Law where 1mg/mL IgG has an A280 of 1.4.

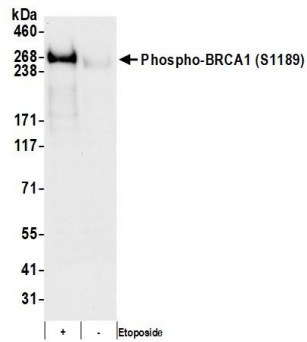
APPLICATIONS Centrifuge tube to remove product from lid. Optimal working dilutions should be determined experimentally by the investigator. Prepare working dilution immediately before use.

Western Blot 1:1000 – 1:2000 (3-8% Tris-acetate gel recommended)

ADDITIONAL INFO <https://www.fortislife.com/p/A300-003A>

Use the link above to view SDS, a current list of citations, and other product specific information.

This document certifies that this product has met all of the quality control standards defined by Bethyl Laboratories, Inc.
Michael Spencer, PhD Date: February 12, 2024



Detection of human Phospho-BRCA1 (S1189) by western blot. *Samples:* Whole cell lysate (25 μ g) from HeLa cells prepared using NETN lysis buffer. *Antibody:* Affinity purified rabbit anti-Phospho-BRCA1 (S1189) antibody (A300-003A lot 2) used for WB at 0.4 μ g/ml. *Detection:* Chemiluminescence with an exposure time of 75 seconds.