

BRCA1 Antibody

Rabbit Polyclonal

Antigen Affinity Purified	RefSeq ID	NP_009225.1
Catalog No. A300-000A	Uniprot ID	P38398
Lot No. 5	GeneID	672

APPLICATIONS	WB, IP
SPECIES REACTIVITY	Human
PRESUMED REACTIVITY	Based on 100% sequence identity, this antibody is predicted to react with Monkey, Gorilla and Chimpanzee
AMOUNT	100 µl
CONCENTRATION	1000 µg/ml
STORAGE/SHELF LIFE	2 – 8°C / 1 year from date of receipt
PHYSICAL STATE	Liquid
BUFFER	Tris-citrate/phosphate buffer, pH 7 to 8 containing 0.09% Sodium Azide
ISOTYPE	IgG
ORIGIN	USA
PRODUCTION PROCEDURES	Antibody was affinity purified using an epitope specific to BRCA1 immobilized on solid support.

The epitope recognized by A300-000A maps to a region between residue 1800 and the C-terminus (residue 1863) of human Breast Cancer Gene 1 using the numbering given in entry NP_009225.1 (GeneID 672).

Immunoglobulin concentration was determined by extinction coefficient: absorbance at 280 nm of 1.4 equals 1.0 mg of IgG.

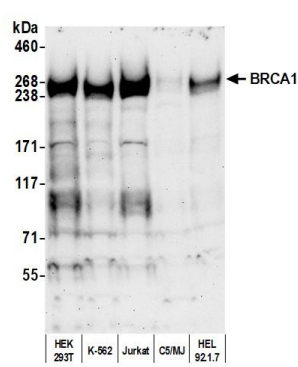
APPLICATIONS Centrifuge tube to remove product from lid. Optimal working dilutions should be determined experimentally by the investigator. Prepare working dilution immediately before use.

Western Blot	1:1,000 – 1:10,000
Immunoprecipitation	2 – 10 µg/mg lysate

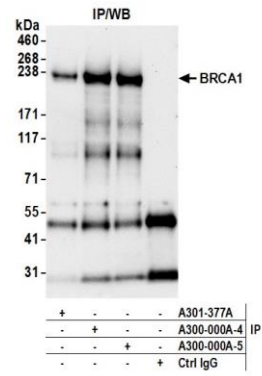
ADDITIONAL INFO <https://www.fortislif.com/p/A300-000A>

Use the link above to view SDS, a current list of citations, and other product specific information.

This document certifies that this product has met all of the quality control standards defined by Bethyl Laboratories, Inc.
Michael Spencer, PhD Date: September 21, 2023



Detection of human BRCA1 by western blot. *Samples:* Whole cell lysate (50 µg) from HEK293T, K-562, Jurkat, C5/MJ, and HEL 92.1.7 cells prepared using NETN lysis buffer. *Antibody:* Affinity purified rabbit anti-BRCA1 antibody (A300-000A lot 5) used for WB at 0.4 µg/ml. *Detection:* Chemiluminescence with an exposure time of 3 minutes.



Detection of human BRCA1 by western blot of immunoprecipitates. *Samples:* Whole cell lysate (1.0 mg per IP reaction; 20% of IP loaded) from HEK293T cells prepared using NETN lysis buffer. *Antibodies:* Affinity purified rabbit anti-BRCA1 antibody (A300-000A lot 5) used for IP at 6 µg per reaction. BRCA1 was also immunoprecipitated by a previous lot of this antibody (A300-000A lot 4) and a second antibody against a different epitope of BRCA1 (A301-377A). For blotting immunoprecipitated BRCA1, A300-000A was used at 0.4 µg/ml. *Detection:* Chemiluminescence with an exposure time of 75 seconds.