

KT3 Tag Antibody

Rabbit Polyclonal

Antigen Affinity Purified

Catalog No. A190-129A

Lot No. A190-129A-1



APPLICATIONS	WB, IP, ICC, ELISA
AMOUNT	0.1 ml
CONCENTRATION	1 mg/ml
STORAGE/SHELF LIFE	2 - 8° C / 1 year from date of receipt
PHYSICAL STATE	Liquid
BUFFER	Phosphate Buffered Saline (PBS) containing 0.09% Sodium Azide
ISOTYPE	IgG
ORIGIN	USA
PRODUCTION PROCEDURES	Rabbits were immunized with KT3 (KPPTPPPEPET) conjugated to KLH. Antibody was isolated by affinity chromatography using the peptide immobilized on solid support.

Antibody concentration was determined by extinction coefficient: absorbance at 280 nm of 1.4 equals 1.0 mg of IgG.

APPLICATIONS Centrifuge tube to remove product from lid. Optimal working dilutions should be determined experimentally by the investigator. Prepare working dilution immediately before use.

Western Blot	1:1,000 – 1:30,000
Immunoprecipitation	1 – 4 µg/mg lysate
Immunocytochemistry	1:100 – 1:400
ELISA	1:1,000 – 1:30,000; for coating plates 1:100 – 1:500

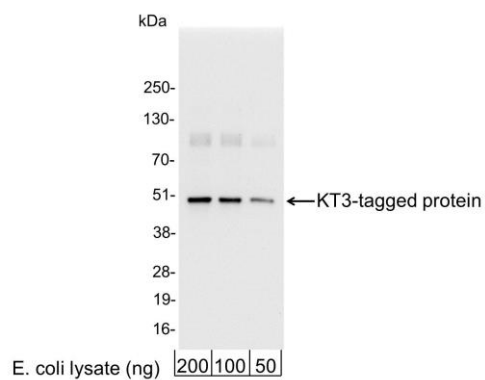
APPLICATION NOTES Not all listed applications have been specifically tested by our laboratory.

Validation by Western Blot was performed using a Western Blot Gel 4–20%.

ADDITIONAL INFO <https://www.bethyl.com/product/A190-129A>

Use the link above to view SDS, a current list of citations, and other product specific information.

This document certifies that this product has met all of the quality control standards defined by Bethyl Laboratories, Inc.
Eric McIntush, PhD | Chief Scientific Officer Date: September 3, 2019

**Detection of KT3-tagged Protein by western blot.**

Samples: 200, 100, or 50 ng of E. coli whole cell lysate expressing a multi-tag fusion protein. *Antibodies:* Affinity purified, rabbit anti-KT3 antibody A190-129A used for WB at 0.04 µg/ml (1:25,000). *Detection:* Chemiluminescence with an exposure time of 3 seconds.