

# Glu-Glu Antibody

Goat Polyclonal

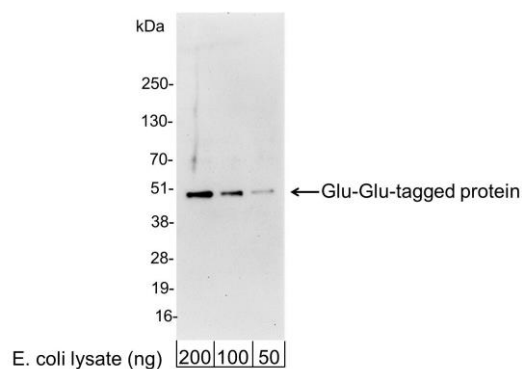
Antigen Affinity Purified

Catalog No. A190-110A

Lot No. A190-110A-2



<b>APPLICATIONS</b>	WB, IP, ICC, ELISA
<b>ISOTYPE</b>	IgG
<b>AMOUNT</b>	0.1 ml at 1 mg/ml
<b>STORAGE/SHELF LIFE</b>	2 - 8° C / 1 year from date of receipt
<b>PHYSICAL STATE</b>	Liquid
<b>BUFFER</b>	Phosphate Buffered Saline (PBS) containing 0.09% Sodium Azide
<b>ORIGIN</b>	USA
<b>PRODUCTION PROCEDURES</b>	Goats were immunized with a synthetic peptide representing amino acid residues 314 - 319 (EYMPME) of middle T antigen of mouse polyomavirus conjugated to KLH. Antibody was isolated by affinity chromatography using the peptide immobilized on solid support.  Antibody concentration was determined by extinction coefficient: absorbance at 280 nm of 1.4 equals 1.0 mg of IgG.
<b>APPLICATIONS</b>	Centrifuge tube to remove product from lid. Optimal working dilutions should be determined experimentally by the investigator. Prepare working dilution immediately before use.  Western Blot                      1:1,000 - 1:30,000 Immunoprecipitation          1 - 4 µg/mg lysate Immunocytochemistry        1:100 - 1:400 ELISA                                1:1,000 - 1:30,000; for coating plates 1:100 - 1:500
<b>APPLICATION NOTES</b>	Not all listed applications have been specifically tested by our laboratory. Validation by Western Blot was performed using a Western Blot Gel 4-20%, 10 x 10 cm and related ReliaBLOT® buffers and reagents.
<b>ADDITIONAL INFO</b>	<a href="http://www.bethyl.com/product/A190-110A">http://www.bethyl.com/product/A190-110A</a> Use the link above to view SDS, a current list of citations, and other product specific information.



**Detection of Glu-Glu-tagged Protein by Western Blot.**  
*Samples:* 200, 100, or 50 ng of E. coli whole cell lysate expressing a multi-tag fusion protein. *Antibodies:* Affinity purified, goat anti-Glu-Glu antibody A190-110A used for WB at 0.2  $\mu\text{g/ml}$  (1:5,000). *Detection:* Chemiluminescence with an exposure time of 30 seconds.