

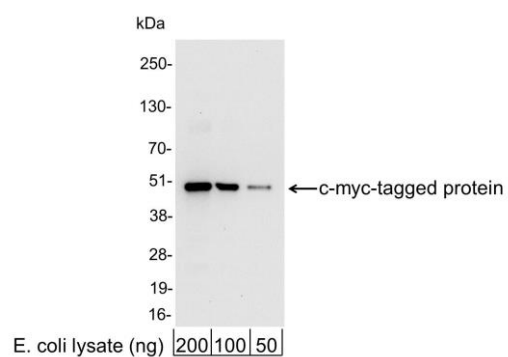
Myc Tag Antibody

Rabbit Polyclonal	Conjugate	HRP
Antigen Affinity Purified		
Catalog No. A190-105P	GeneID	4609
Lot No. A190-105P-19		

APPLICATIONS	WB, IHC, ICC, ELISA								
AMOUNT	0.1 ml								
CONCENTRATION	1 mg/ml								
STORAGE/SHELF LIFE	2 – 8° C / 1 year from date of receipt								
PHYSICAL STATE	Liquid								
BUFFER	Phosphate Buffered Saline (PBS) containing 0.2% BSA and 0.05% Pro-Clean 400								
ISOTYPE	IgG								
ORIGIN	USA								
PRODUCTION PROCEDURES	<p>Rabbits were immunized with a synthetic peptide representing amino acid residues 410–419 (EQKLISEEDL) of human myc conjugated to KLH. Antibody was isolated by affinity chromatography using the peptide immobilized on solid support and conjugated to horseradish peroxidase (HRP).</p> <p>Antibody concentration was determined by extinction coefficient prior to conjugation: absorbance at 280 nm of 1.4 equals 1.0 mg of IgG. Molar enzyme/antibody protein ratio is 4:1.</p>								
APPLICATIONS	<p>Centrifuge tube to remove product from lid. Optimal working dilutions should be determined experimentally by the investigator. Prepare working dilution immediately before use.</p> <table><tr><td>Western Blot</td><td>1:1,000 – 1:30,000</td></tr><tr><td>Immunohistochemistry</td><td>Not applicable</td></tr><tr><td>Immunocytochemistry</td><td>1:200 – 1:500</td></tr><tr><td>ELISA</td><td>1:10,000 – 1:100,000</td></tr></table>	Western Blot	1:1,000 – 1:30,000	Immunohistochemistry	Not applicable	Immunocytochemistry	1:200 – 1:500	ELISA	1:10,000 – 1:100,000
Western Blot	1:1,000 – 1:30,000								
Immunohistochemistry	Not applicable								
Immunocytochemistry	1:200 – 1:500								
ELISA	1:10,000 – 1:100,000								
APPLICATION NOTES	Not all listed applications have been specifically tested by our laboratory.								
ADDITIONAL INFO	<p>Validation by Western Blot was performed using a Western Blot Gel 4–20%.</p> <p>https://www.bethyl.com/product/A190-105P</p> <p>Use the link above to view SDS, a current list of citations, and other product specific information.</p>								

This document certifies that this product has met all of the quality control standards defined by Bethyl Laboratories, Inc.
Michael Spencer, PhD

Date: September 21, 2021

**Detection of c-myc-tagged Protein by western blot.**

Samples: 200, 100, or 50 ng of E. coli whole cell lysate expressing a multi-tag fusion protein. *Antibodies:* Affinity-purified, HRP-conjugated, rabbit anti-Myc Tag antibody A190-105P used for WB at 0.04 µg/ml (1:25,000).

Detection: Chemiluminescence with an exposure time of 10 seconds.