

ECS (DYKDDDDK) Tag Antibody

Goat Polyclonal

Antigen Affinity Purified

Catalog No. A190-101A

Lot No. A190-101A-5



APPLICATIONS	WB, IP, ICC, ELISA
AMOUNT	0.1 ml
CONCENTRATION	1 mg/ml
STORAGE/SHELF LIFE	2 – 8° C / 1 year from date of receipt
PHYSICAL STATE	Liquid
BUFFER	Phosphate Buffered Saline (PBS) containing 0.09% Sodium Azide
ISOTYPE	IgG
ORIGIN	USA
PRODUCTION PROCEDURES	Goats were immunized with ECS, Enterokinase Cleavage Site (DYKDDDDK) conjugated to KLH. Antibody was isolated by affinity chromatography using the peptide immobilized on solid support.

Antibody concentration was determined by extinction coefficient: absorbance at 280 nm of 1.4 equals 1.0 mg of IgG.

By ELISA, Western blot and Immunofluorescence, this antibody reacts with FLAG™.

APPLICATIONS Centrifuge tube to remove product from lid. Optimal working dilutions should be determined experimentally by the investigator. Prepare working dilution immediately before use.

Western Blot 1:1,000 – 1:30,000

Immunoprecipitation 1 – 4 µg/mg lysate

Immunocytochemistry 1:100 – 1:400

ELISA 1:1,000 – 1:30,000; for coating plates 1:100 – 1:500

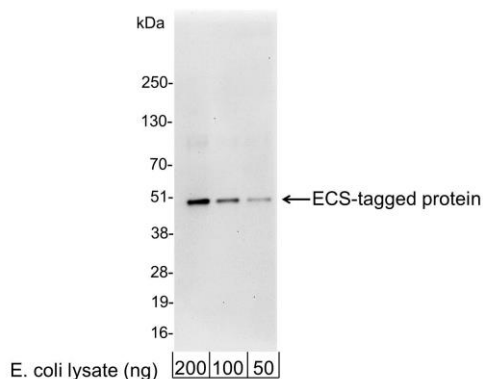
APPLICATION NOTES Not all listed applications have been specifically tested by our laboratory.

Validation by Western Blot was performed using a Western Blot Gel 4–20%.

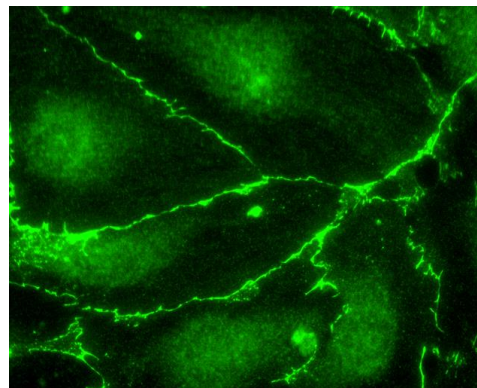
ADDITIONAL INFO <https://www.bethyl.com/product/A190-101A>

Use the link above to view SDS, a current list of citations, and other product specific information.

This document certifies that this product has met all of the quality control standards defined by Bethyl Laboratories, Inc.
Eric McIntush, PhD | Chief Scientific Officer Date: September 17, 2019



Detection of ECS (DYKDDDDK)-tagged Protein by western blot. *Samples:* 200, 100, or 50 ng of E. coli whole cell lysate expressing a multi-tag fusion protein. *Antibody:* Affinity purified goat anti-ECS (DYKDDDDK) antibody A190-101A used for WB at 0.04 µg/ml (1:25,000). *Detection:* Chemiluminescence with an exposure time of 30 seconds.



Detection of FLAG™ Tagged Beta-Catenin by immunofluorescence. *Samples:* Human microvascular endothelial cells expressing FLAG™ tagged beta-catenin following transient transfection. *Antibody:* Affinity purified goat anti-ECS (DYKDDDDK) (Cat. No. A190-101A) used at 1 µg/ml. *Detection:* FITC labeled rabbit anti-goat IgG (h+l).