

Rabbit IgG–Fc Fragment cross-adsorbed Antibody

Goat Polyclonal

Conjugate DyLight® 488

Antigen Affinity Purified

Catalog No. A120–211D2

Lot No. A120–211D2–5



APPLICATIONS	IHC, ICC, F, IF
SPECIES REACTIVITY	Rabbit. Minimum reactivity to human, mouse and rat
ISOTYPE	IgG
AMOUNT	1 ml at 0.5 mg/ml
STORAGE/SHELF LIFE	2 – 8° C / 1 year from date of receipt
PHYSICAL STATE	Liquid
FLUOROPHORE/PROTEIN	5.7
BUFFER	Phosphate Buffered Saline (PBS) containing 0.2% BSA and 0.09% Sodium Azide
ORIGIN	USA
PRODUCTION PROCEDURES	Antiserum was solid phase adsorbed to ensure class specificity. Antiserum was cross adsorbed using human, mouse and rat immunosorbents to remove cross reactive antibodies. The antibody to rabbit IgG was isolated by affinity chromatography using antigen coupled to agarose beads and conjugated to DyLight® 488.

Antibody concentration was determined by extinction coefficient: absorbance at 280 nm of 1.4 equals 1.0 mg of IgG.

By immunoelectrophoresis, this antibody reacts specifically with rabbit IgG. No antibody was detected against non-immunoglobulin serum proteins. Less than 1% cross reactivity to human, mouse and rat IgG was detected. This antibody may cross react with IgG from other species.

APPLICATIONS Centrifuge tube to remove product from lid. Optimal working dilutions should be determined experimentally by the investigator. Prepare working dilution immediately before use.

Immunohistochemistry 1:40 – 1:400

Immunocytochemistry 1:40 – 1:400

Flow Cytometry 1:50 – 1:200

Immunofluorescence 1:40 – 1:400

APPLICATION NOTES Not all listed applications have been specifically tested by our laboratory.

DyLight® 488 is excited at 493 (in PBS) and emits at 518 (in PBS).

DyLight® is a trademark of Thermo Fisher Scientific Inc. and its subsidiaries.

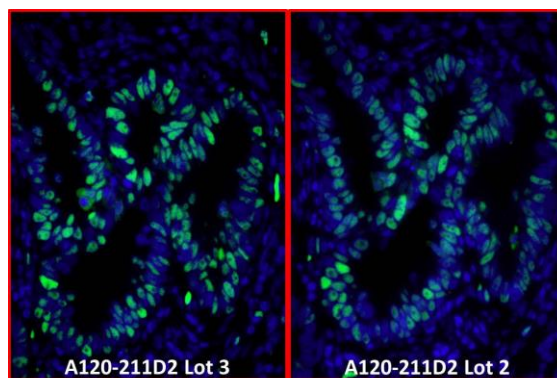
ADDITIONAL INFO <https://www.bethyl.com/product/A120–211D2>

Use the link above to view SDS, a current list of citations, and other product specific information.

This document certifies that this product has met all of the quality control standards defined by Bethyl Laboratories, Inc.

Eric McIntush, PhD | Chief Scientific Officer

Date: December 3, 2018

**Detection of human PCNA by immunofluorescence.**

Samples: FFPE serial sections of human breast carcinoma.

Primary Antibody: Affinity purified rabbit anti-PCNA (Cat. No. IHC-00012 Lot1) used at a dilution of 1:100. *Secondary*

Antibody: Green-fluorescent goat anti-rabbit IgG-Fc Fragment cross-adsorbed Antibody DyLight® 488

Conjugated (A120-211D2 Lot 3) used at a dilution of 1:50 (10µg/ml). *Counterstain:* DAPI (blue)