

Rabbit IgG-heavy and light chain Antibody

Goat Polyclonal
Antigen Affinity Purified
Catalog No. A120-101D4
Lot No. A120-101D4-12

Conjugate DyLight® 594



| | |
|------------------------------|---|
| APPLICATIONS | IHC, ICC, F, IF |
| SPECIES REACTIVITY | Rabbit |
| AMOUNT | 1 ml |
| CONCENTRATION | 0.5 mg/ml |
| STORAGE/SHELF LIFE | 2 – 8° C / 1 year from date of receipt |
| PHYSICAL STATE | Liquid |
| BUFFER | Phosphate Buffered Saline (PBS) containing 0.2% BSA and 0.09% Sodium Azide |
| FLUOROPHORE/PROTEIN | 6 |
| ISOTYPE | IgG |
| ORIGIN | USA |
| PRODUCTION PROCEDURES | The antibody was isolated by affinity chromatography using antigen coupled to agarose beads and conjugated to DyLight® 594. |

Antibody concentration was determined by extinction coefficient prior to conjugation: absorbance at 280 nm of 1.4 equals 1.0 mg of IgG.

By immunoelectrophoresis and ELISA this antibody reacts specifically with rabbit IgG and with light chains common to other rabbit immunoglobulins. No antibody was detected against non-immunoglobulin serum proteins. This antibody may cross react with IgG from other species.

APPLICATIONS Centrifuge tube to remove product from lid. Optimal working dilutions should be determined experimentally by the investigator. Prepare working dilution immediately before use.

| | |
|----------------------|--------------|
| Immunohistochemistry | 1:50 – 1:500 |
| Immunocytochemistry | 1:50 – 1:500 |
| Flow Cytometry | 1:50 – 1:200 |
| Immunofluorescence | 1:50 – 1:500 |

APPLICATION NOTES Not all listed applications have been specifically tested by our laboratory.

DyLight® 594 is excited at 593 (in PBS) and emits at 618 (in PBS).

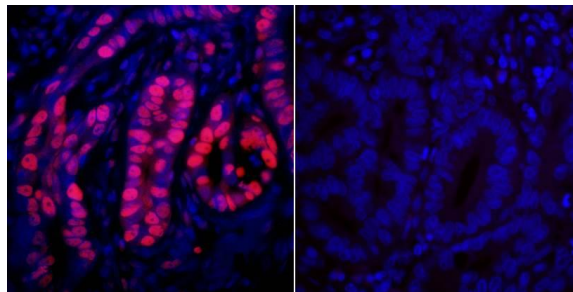
DyLight® is a trademark of Thermo Fisher Scientific Inc. and its subsidiaries.

ADDITIONAL INFO <https://www.bethyl.com/product/A120-101D4>

Use the link above to view SDS, a current list of citations, and other product specific information.

This document certifies that this product has met all of the quality control standards defined by Bethyl Laboratories, Inc.
Brian McWilliams, PhD

Date: February 5, 2021

**Detection of human PCNA by immunofluorescence.**

Sample: FFPE section of human stomach carcinoma.

Primary Antibody: Affinity purified rabbit anti-PCNA (Cat. No. IHC-00012 Lot1) used at a dilution of 1:100 (left) and primary antibody omitted (right). *Secondary Antibody:* Red-fluorescent goat anti-rabbit IgG-heavy and light chain Antibody DyLight® 594 Conjugated (A120-101D4 Lot 4) used at a dilution of 1:100 (5µg/ml) (left) and 1:50 (10 µg/ml) (right). *Counterstain:* DAPI (blue)