



## Growth Hormone, chicken recombinant (rchGH)

**Catalog No:** 87391  
**Lot No:** XXXXX  
**Source:** *E. coli*  
**Synonyms:** GH1, GH, GHN, GH-N, hGH-N, Pituitary growth hormone, Growth hormone 1, Somatotropin

### Background

GH is a member of the somatotropin/prolactin family of hormones which play an important role in growth control. Its major role in stimulating body growth is to stimulate the liver and other tissues to secrete IGF-1. It stimulates both the differentiation and proliferation of myoblasts. It also stimulates amino acid uptake and protein synthesis in muscle and other tissues.

### Description

Growth Hormone chicken recombinant (cGH) produced in *E. coli* is a single, non-glycosylated, polypeptide chain containing 191 amino acids with an additional Ala at its N-terminus and having a molecular mass of 22255 Dalton. GH is purified by proprietary chromatographic techniques.

### Physical Appearance

Sterile filtered white lyophilized (freeze-dried) powder.

### Formulation

The protein was lyophilized from a concentrated (1 mg/ml) solution with 0.3% NaHCO<sub>3</sub> adjusted to pH 8.

### Solubility

It is recommended to reconstitute the lyophilized GH in sterile water or 0.4% NaHCO<sub>3</sub> adjusted to pH 8-9, not less than 100 µg/ml and not more than 3 mg/ml, which can then be further diluted to other aqueous solutions, preferably in presence of carrier protein.

### Stability

Lyophilized GH, although stable at room temperature for 3 weeks, should be stored desiccated below -18°C. Upon reconstitution at > 0.1 mg/ml and filter sterilization GH can be stored at 4°C for several weeks. At lower concentration addition of a carrier protein (0.1% HSA or BSA) is recommended. Please prevent freeze-thaw cycles.

### Purity

Greater than 99.0% as determined by (a) Analysis by SDS-PAGE, (b) Analysis by SEC-HPLC.

### Amino Acid Sequence

The sequence of the first five N-terminal amino acids was determined and was found to be Ala-Thr-Phe-Pro-Ala.

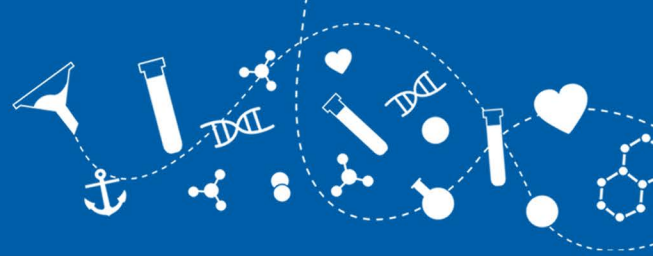
### Activity

Chicken recombinant GH is fully biologically active in homologous assays and in PDF-P1 3B9 cells stably transfected with rabbit GH receptors.

## CONTACT US TODAY

BIOMOL GmbH • Kieler Straße 303a • 22525 Hamburg • Germany • [info@biomol.de](mailto:info@biomol.de) • [www.biomol.de](http://www.biomol.de)

Fon: +49 (0)40-853 260 0 • TOLL FREE IN GERMANY: Fon: 0800-246 66 51



#### Usage

This product is offered by Biomol for research purposes only. Not for diagnostic purposes or human use. It may not be resold or used to manufacture commercial products without written approval of Biomol GmbH.

**CONTACT US TODAY**

BIOMOL GmbH • Kieler Straße 303a • 22525 Hamburg • Germany • [info@biomol.de](mailto:info@biomol.de) • [www.biomol.de](http://www.biomol.de)  
Fon: +49 (0)40-853 260 0 • TOLL FREE IN GERMANY: Fon: 0800-246 66 51