



F(ab')₂ Anti-HUMAN IgG F(c) (GOAT) Antibody Biotin Conjugated Min X Bv Hs Ms & Rt Serum Proteins - 709-1617

Code: 709-1617

Size: 1 mg

Product Description: F(ab')₂ Anti-HUMAN IgG F(c) (GOAT) Antibody Biotin Conjugated Min X Bv Hs Ms & Rt Serum Proteins - 709-1617

Concentration: 1.0 mg/mL by UV absorbance at 280 nm

PhysicalState: Lyophilized

Label	Biotin
Host	Goat
Buffer	0.02 M Potassium Phosphate, 0.15 M Sodium Chloride, pH 7.2
Reconstitution Volume	1.0 mL
Reconstitution Buffer	Restore with deionized water (or equivalent)
Stabilizer	10 mg/mL Bovine Serum Albumin (BSA) - Immunoglobulin and Protease free
Preservative	0.01% (w/v) Sodium Azide
Storage Condition	Store vial at 4° C prior to restoration. For extended storage aliquot contents and freeze at -20° C or below. Avoid cycles of freezing and thawing. Centrifuge product if not completely clear after standing at room temperature. This product is stable for several weeks at 4° C as an undiluted liquid. Dilute only prior to immediate use.
Synonyms	Goat F(ab') ₂ Anti-Human IgG F(c) Antibody Biotin Conjugated Pre-Adsorbed, Goat Fab ₂ Anti-Human IgG Fc Fragment Biotin Conjugated Antibody, Goat F(ab') ₂ Anti-Human IgG F(c) Fragment Biotin Conjugated Antibody
Application Note	F(ab') ₂ Anti-Human IgG F(c) Biotin Antibody has been assayed against 1.0 µg of Human IgG in a standard capture ELISA using Peroxidase Conjugated Streptavidin #S000-03 and ABTS (2,2'-azino-bis-[3-ethylbenzothiazoline-6-sulfonic acid]) code # ABTS-100 as a substrate for 30 minutes at room temperature. A working dilution of 1:12,000 to 1:50,000 is suggested for this product. Suitable for immunomicroscopy and flow cytometry or FACS analysis as well as other antibody based fluorescent assays requiring lot-to-lot consistency.
Background	F(ab') ₂ Anti-Human IgG F(c) Biotin Antibody generated in goat detects Human F(c). Representing approximately 75% of serum immunoglobulins in humans, IgG is the most abundant antibody isotype found in the circulation. IgG molecules are synthesized and secreted by plasma B cells. Secondary Antibodies are available in a variety of formats and conjugate types. When choosing a secondary antibody product, consideration must be given to species and immunoglobulin specificity, conjugate type, fragment and chain specificity, level of cross-reactivity, and host-species source and fragment composition. F(c) Antibody is ideal for investigators who routinely perform flow cytometry, immunohistochemistry or IHC and other immunoassays.
Purity And Specificity	This product was prepared from monospecific antiserum by immunoaffinity chromatography using Human IgG coupled to agarose beads followed by solid phase adsorption(s) to remove any unwanted reactivities, pepsin digestion and chromatographic separation. Assay by immunoelectrophoresis resulted in a single precipitin arc against anti-Biotin, anti-Goat Serum, Human IgG, Human IgG F(c) and Human Serum. No reaction was observed against anti-Pepsin, anti-Goat IgG F(c), Human IgG F(ab) or Bovine, Horse, Mouse and Rat Serum Proteins.
Assay Dilutions	User Optimized
ELISA	1:125,000 - 1:175,000
Western Blot	1:2,000 - 1:10,000
Immunohistochemistry	1:1,000 - 1:5,000
Other Assays	User Optimized
Expiration	Expiration date is one (1) year from date of opening.
Immunogen	Human IgG F(c) fragment
Related Products	

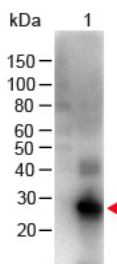
610-4302

Anti-MOUSE IgG (H&L) (RABBIT) Antibody Peroxidase Conjugated - 610-4302

611-1302	Anti-RABBIT IgG (H&L) (GOAT) Antibody Peroxidase Conjugated - 611-1302
B304	NORMAL GOAT SERUM (NGS) - B304
BSA-50	BOVINE SERUM ALBUMIN - Fraction V (Immunoglobulin and Protease Free) - BSA-50

Images

1 Western Blot of Goat anti-F(ab')₂ Human IgG F(c) Antibody Biotin Conjugated Pre-Adsorbed Lane 1: Human Fc Load: 100 ng per lane Primary Antibody: F(ab')₂ Human IgG F(c) Antibody Biotin Conjugated Pre-Adsorbed at 1:1000 for 60 min RT Secondary antibody: HRP Conjugated Streptavidin at 1:40,000 for 30 min at RT Block: MB-070 for 30 min at RTPredicted/Observed Size: 28 kDa/28 kDa



Disclaimer

This product is for research use only and is not intended for therapeutic or diagnostic applications. Please contact a technical service representative for more information. All products of animal origin manufactured by Rockland Immunochemicals are derived from starting materials of North American origin. Collection was performed in United States Department of Agriculture (USDA) inspected facilities and all materials have been inspected and certified to be free of disease and suitable for exportation. All properties listed are typical characteristics and are not specifications. All suggestions and data are offered in good faith but without guarantee as conditions and methods of use of our products are beyond our control. All claims must be made within 30 days following the date of delivery. The prospective user must determine the suitability of our materials before adopting them on a commercial scale. Suggested uses of our products are not recommendations to use our products in violation of any patent or as a license under any patent of Rockland Immunochemicals, Inc. If you require a commercial license to use this material and do not have one, then return this material, unopened to: Rockland Inc., P.O. BOX 5199, Limerick, Pennsylvania, USA.