

Anti-RABBIT IgG (H&L) (DONKEY) Antibody - 611-7102

Code: 611-7102

Size: 2 mg

Product Description: Anti-RABBIT IgG (H&L) (DONKEY) Antibody - 611-7102

Concentration: 2.0 mg/mL by UV absorbance at 280 nm

PhysicalState: Liquid (sterile filtered)

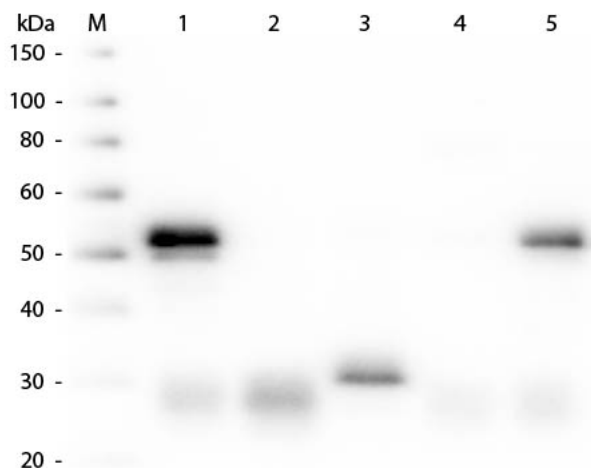
Label	Unconjugated
Host	Donkey
Buffer	0.02 M Potassium Phosphate, 0.15 M Sodium Chloride, pH 7.2
Stabilizer	None
Preservative	0.01% (w/v) Sodium Azide
Storage Condition	Store vial at 4° C prior to opening. This product is stable for several weeks at 4° C as an undiluted liquid. Dilute only prior to immediate use. For extended storage aliquot contents and freeze at -20° C or below. Avoid cycles of freezing and thawing.
Synonyms	Donkey Anti-Rabbit IgG Antibody, Donkey Anti Rabbit IgG Antibody
Application Note	Anti-Rabbit IgG antibody is suitable for ELISA, western blot, and immunohistochemistry, as well as other assays requiring lot-to-lot consistency.
Background	Anti-Rabbit IgG (H&L) Antibody generated in donkey detects reactivity to Rabbit IgG. Secreted as part of the adaptive immune response by plasma B cells, immunoglobulin G constitutes 75% of serum immunoglobulins. Immunoglobulin G binds to viruses, bacteria, as well as fungi and facilitates their destruction or neutralization via agglutination (and thereby immobilizing them), activation of the complement cascade, and opsinization for phagocytosis. The whole IgG molecule possesses both the F(c) region, recognized by high-affinity Fc receptor proteins, as well as the F(ab) region possessing the epitope-recognition site. Both the Heavy and Light chains of the antibody molecule are present. Secondary Antibodies are available in a variety of formats and conjugate types. When choosing a secondary antibody product, consideration must be given to species and immunoglobulin specificity, conjugate type, fragment and chain specificity, level of cross-reactivity, and host-species source and fragment composition.
Purity And Specificity	This product was prepared from monospecific antiserum by immunoaffinity chromatography using Rabbit IgG coupled to agarose beads followed by solid phase adsorption(s) to remove any unwanted reactivities. Assay by immunoelectrophoresis resulted in a single precipitin arc against anti-Donkey Serum, Rabbit IgG and Rabbit Serum.
Assay Dilutions	User Optimized
ELISA	1:40,000 - 1:160,000
Western Blot	1:2,000 - 1:10,000
Immunohistochemistry	1:1,000 - 1:5,000
Other Assays	User Optimized
Expiration	Expiration date is one (1) year from date of opening.
Immunogen	Rabbit IgG whole molecule

Related Products

610-4302	Anti-MOUSE IgG (H&L) (RABBIT) Antibody Peroxidase Conjugated - 610-4302
611-1302	Anti-RABBIT IgG (H&L) (GOAT) Antibody Peroxidase Conjugated - 611-1302
B304	NORMAL GOAT SERUM (NGS) - B304
BSA-50	BOVINE SERUM ALBUMIN - Fraction V (Immunoglobulin and Protease Free) - BSA-50

Images

Western Blot of Anti-Rabbit IgG (H&L) (DONKEY) Antibody Peroxidase Conjugated (p/n 611-7302). Lane M: 3 μ l Molecular Ladder. Lane 1: Rabbit IgG whole molecule (p/n 011-0102). Lane 2: Rabbit IgG F(ab) Fragment (p/n 011-0105). Lane 3: Rabbit IgG F(c) Fragment (p/n 010-0103). Lane 4: Rabbit IgM Whole Molecule (p/n 011-0107). Lane 5: Normal Rabbit Serum (p/n B309). All samples were reduced. Load: 50 ng per lane. Block: MB-070 for 30 min at RT. Primary Antibody: Anti-Rabbit IgG (H&L) (DONKEY) Antibody Peroxidase Conjugated (p/n 611-7302) 1:5,000 for 60 min at RT. Secondary antibody: None. Predicted/Observed Size: 25 and 50 kDa for Rabbit IgG and Serum, 25 kDa for F(c) and F(ab), 70 and 23 kDa for IgM. Rabbit F(c) migrates slightly higher.



Disclaimer

This product is for research use only and is not intended for therapeutic or diagnostic applications. Please contact a technical service representative for more information. All products of animal origin manufactured by Rockland Immunochemicals are derived from starting materials of North American origin. Collection was performed in United States Department of Agriculture (USDA) inspected facilities and all materials have been inspected and certified to be free of disease and suitable for exportation. All properties listed are typical characteristics and are not specifications. All suggestions and data are offered in good faith but without guarantee as conditions and methods of use of our products are beyond our control. All claims must be made within 30 days following the date of delivery. The prospective user must determine the suitability of our materials before adopting them on a commercial scale. Suggested uses of our products are not recommendations to use our products in violation of any patent or as a license under any patent of Rockland Immunochemicals, Inc. If you require a commercial license to use this material and do not have one, then return this material, unopened to: Rockland Inc., P.O. BOX 5199, Limerick, Pennsylvania, USA.