

Anti-MOUSE IgG (H&L) (DONKEY) Antibody Biotin Conjugated - 610-706-002
Code: 610-706-002

Size: 2 mg

Product Description: Anti-MOUSE IgG (H&L) (DONKEY) Antibody Biotin Conjugated - 610-706-002

Concentration: 2.0 mg/mL by UV absorbance at 280 nm

PhysicalState: Lyophilized

Label	Biotin
Host	Donkey
Buffer	0.02 M Potassium Phosphate, 0.15 M Sodium Chloride, pH 7.2
Reconstitution Volume	1.0 mL
Reconstitution Buffer	Restore with deionized water (or equivalent)
Stabilizer	10 mg/mL Bovine Serum Albumin (BSA) - Immunoglobulin and Protease free
Preservative	0.01% (w/v) Sodium Azide
Storage Condition	Store vial at 4° C prior to restoration. For extended storage aliquot contents and freeze at -20° C or below. Avoid cycles of freezing and thawing. Centrifuge product if not completely clear after standing at room temperature. This product is stable for several weeks at 4° C as an undiluted liquid. Dilute only prior to immediate use.
Synonyms	Donkey anti-Mouse IgG Biotin Conjugated Antibody, Donkey anti Mouse IgG Antibody Biotin Conjugation
Application Note	This product has been assayed against 1.0 ug of Mouse IgG in a standard capture ELISA using Peroxidase Conjugated Streptavidin #S000-03 and ABTS (2,2'-azino-bis-[3-ethylbenzothiazoline-6-sulfonic acid]) code # ABTS-100 as a substrate for 30 minutes at room temperature. A working dilution of 1:30,000 to 1:120,000 of the reconstitution concentration is suggested for this product.
Background	Anti-Mouse IgG Biotin Antibody generated in donkey detects reactivity to Mouse IgG. Secreted as part of the adaptive immune response by plasma B cells, immunoglobulin G constitutes 75% of serum immunoglobulins. Immunoglobulin G binds to viruses, bacteria, as well as fungi and facilitates their destruction or neutralization via agglutination (and thereby immobilizing them), activation of the complement cascade, and opsonization for phagocytosis. The whole IgG molecule possesses both the F(c) region, recognized by high-affinity Fc receptor proteins, as well as the F(ab) region possessing the epitope-recognition site. Both the Heavy and Light chains of the antibody molecule are present. Secondary Antibodies are available in a variety of formats and conjugate types. When choosing a secondary antibody product, consideration must be given to species and immunoglobulin specificity, conjugate type, fragment and chain specificity, level of cross-reactivity, and host-species source and fragment composition.
Purity And Specificity	This product was prepared from monospecific antiserum by immunoaffinity chromatography using Mouse IgG coupled to agarose beads followed by solid phase adsorption(s) to remove any unwanted reactivities. Assay by immunoelectrophoresis resulted in a single precipitin arc against anti-biotin, anti-Donkey Serum, Mouse IgG and Mouse Serum.
Assay Dilutions	User Optimized
ELISA	1:20,000 - 1:100,000
Western Blot	1:2,000 - 1:10,000
Immunohistochemistry	1:1,000 - 1:5,000
Other Assays	User Optimized
Expiration	Expiration date is one (1) year from date of opening.
Immunogen	Mouse IgG whole molecule

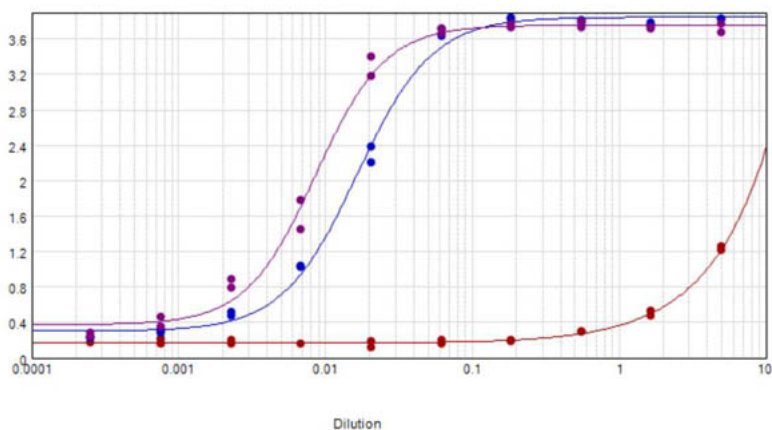
Related Products

610-4302	Anti-MOUSE IgG (H&L) (RABBIT) Antibody Peroxidase Conjugated - 610-4302
611-1302	Anti-RABBIT IgG (H&L) (GOAT) Antibody Peroxidase Conjugated - 611-1302
B304	NORMAL GOAT SERUM (NGS) - B304

Images

1

ELISA results of purified Donkey anti-Mouse IgG Biotin conjugated Antibody tested against Mouse IgG. Each well was coated in duplicate with 1.0 μg of Mouse IgG (purple line). The starting dilution of antibody was 5 $\mu\text{g}/\text{ml}$ and the X-axis represents the Log10 of a 3-fold dilution. This titration is a 4-parameter curve fit where the IC50 is defined as the titer of the antibody. Assay performed using Blocking buffer MB-060-1000, Streptavidin HRP conjugate, and TMB-1000 substrate.

**Disclaimer**

This product is for research use only and is not intended for therapeutic or diagnostic applications. Please contact a technical service representative for more information. All products of animal origin manufactured by Rockland Immunochemicals are derived from starting materials of North American origin. Collection was performed in United States Department of Agriculture (USDA) inspected facilities and all materials have been inspected and certified to be free of disease and suitable for exportation. All properties listed are typical characteristics and are not specifications. All suggestions and data are offered in good faith but without guarantee as conditions and methods of use of our products are beyond our control. All claims must be made within 30 days following the date of delivery. The prospective user must determine the suitability of our materials before adopting them on a commercial scale. Suggested uses of our products are not recommendations to use our products in violation of any patent or as a license under any patent of Rockland Immunochemicals, Inc. If you require a commercial license to use this material and do not have one, then return this material, unopened to: Rockland Inc., P.O. BOX 5199, Limerick, Pennsylvania, USA.