



## Anti-MOUSE IgM (mu chain) (RABBIT) Antibody Texas Red™ Conjugated - 610-4907

**Code:** 610-4907

**Size:** 1.5 mg

**Product Description:** Anti-MOUSE IgM (mu chain) (RABBIT) Antibody Texas Red™ Conjugated - 610-4907

**Concentration:** 1.5 mg/mL by UV absorbance at 280 nm

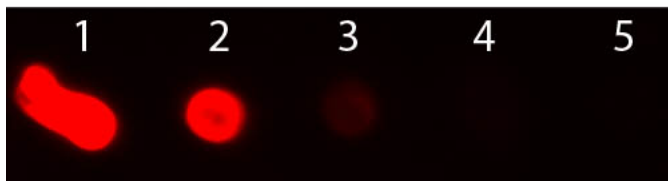
**PhysicalState:** Lyophilized

<b>Label</b>	Texas Red®
<b>Host</b>	Rabbit
<b>Emission Wavelength</b>	620
<b>Excitation Wavelength</b>	596
<b>Buffer</b>	0.02 M Potassium Phosphate, 0.15 M Sodium Chloride, pH 7.2
<b>Reconstitution Volume</b>	1.0 mL
<b>Reconstitution Buffer</b>	Restore with deionized water (or equivalent)
<b>Stabilizer</b>	10 mg/mL Bovine Serum Albumin (BSA) - Immunoglobulin and Protease free
<b>Preservative</b>	0.01% (w/v) Sodium Azide
<b>Storage Condition</b>	Store vial at 4° C prior to restoration. For extended storage aliquot contents and freeze at -20° C or below. Avoid cycles of freezing and thawing. Centrifuge product if not completely clear after standing at room temperature. This product is stable for several weeks at 4° C as an undiluted liquid. Dilute only prior to immediate use.
<b>Synonyms</b>	rabbit Anti-Mouse IgM (mu chain) Antibody Texas Red™ Conjugated, rabbit Anti Mouse IgM mu chain Texas Red™ Conjugated Antibody
<b>Application Note</b>	This product is designed for immunofluorescence microscopy, fluorescence based plate assays (FLISA) and fluorescent western blotting. This product is also suitable for multiplex analysis, including multicolor imaging, utilizing various commercial platforms.
<b>Background</b>	Anti-Mouse IgM antibody specifically detects mouse IgM. Immunoglobulin M is the largest antibody isotype and the first to be secreted against an initial exposure to antigen. IgM is predominantly produced in the spleen. Formed from covalently linking 5 immunoglobulins together, the approximate molecular weight of IgM is 900kDa and possesses 10 binding sites (though due to the size of most antigens, not all sites are capable of binding at once). Due to this large size, IgM is typically isolated to the serum. Anti-Mouse IgM Texas Red antibody is ideal for investigators in Immunology, Microbiology, and Cell Biology.
<b>Purity And Specificity</b>	This product was prepared from monospecific antiserum by immunoaffinity chromatography using Mouse IgM coupled to agarose beads followed by solid phase adsorption(s) to remove any unwanted reactivities. Assay by immunoelectrophoresis resulted in a single precipitin arc against anti-Rabbit Serum, Mouse IgM and Mouse Serum. No reaction was observed against other mouse heavy or light chain proteins.
<b>Assay Dilutions</b>	FLOW CYTOMETRY 1:500 - 1:2,500
<b>FLISA</b>	1:10,000 - 1:50,000
<b>IF Microscopy</b>	1:1,000 - 1:5,000
<b>Flow Cytometry</b>	1:500 - 1:2,500
<b>Other Assays</b>	FLOW CYTOMETRY 1:500 - 1:2,500
<b>Expiration</b>	Expiration date is one (1) year from date of opening.
<b>Immunogen</b>	Mouse IgM whole molecule
<b>Related Products</b>	
610-4302	Anti-MOUSE IgG (H&L) (RABBIT) Antibody Peroxidase Conjugated - 610-4302
611-1302	Anti-RABBIT IgG (H&L) (GOAT) Antibody Peroxidase Conjugated - 611-1302

B304 NORMAL GOAT SERUM (NGS) - B304  
BSA-50 BOVINE SERUM ALBUMIN - Fraction V (Immunoglobulin and  
Protease Free) - BSA-50

## Images

1 Dot Blot of Rabbit anti-Mouse IgM (mu chain) Antibody Texas Red Conjugated. Antigen: Mouse IgM. Load: Lane 1 - 200 ng Lane 2 - 66.7 ng Lane 3 - 22.2 ng Lane 4 - 7.41 ng Lane 5 - 2.47 ng. Primary antibody: n/a. Secondary antibody: Rabbit anti-Mouse IgM (mu chain) Antibody Texas Red Conjugated at 1:1,000 for 60 min at RT. Block: MB-070 for 60 min at RT.



## Disclaimer

This product is for research use only and is not intended for therapeutic or diagnostic applications. Please contact a technical service representative for more information. All products of animal origin manufactured by Rockland Immunochemicals are derived from starting materials of North American origin. Collection was performed in United States Department of Agriculture (USDA) inspected facilities and all materials have been inspected and certified to be free of disease and suitable for exportation. All properties listed are typical characteristics and are not specifications. All suggestions and data are offered in good faith but without guarantee as conditions and methods of use of our products are beyond our control. All claims must be made within 30 days following the date of delivery. The prospective user must determine the suitability of our materials before adopting them on a commercial scale. Suggested uses of our products are not recommendations to use our products in violation of any patent or as a license under any patent of Rockland Immunochemicals, Inc. If you require a commercial license to use this material and do not have one, then return this material, unopened to: Rockland Inc., P.O. BOX 5199, Limerick, Pennsylvania, USA.