



Anti-MOUSE IgM (mu chain) (GOAT) Antibody DyLight™ 649 Conjugated - 610-143-007

Code: 610-143-007

Size: 100 µg

Product Description: Anti-MOUSE IgM (mu chain) (GOAT) Antibody DyLight™ 649 Conjugated - 610-143-007

Concentration: 1.0 mg/mL by UV absorbance at 280 nm

PhysicalState: Lyophilized

Label	DyLight™ 649
Host	Goat
Emission Wavelength	674
Excitation Wavelength	646
Buffer	0.02 M Potassium Phosphate, 0.15 M Sodium Chloride, pH 7.2
Reconstitution Volume	100 µL
Reconstitution Buffer	Restore with deionized water (or equivalent)
Stabilizer	10 mg/mL Bovine Serum Albumin (BSA) - Immunoglobulin and Protease free
Preservative	0.01% (w/v) Sodium Azide
Storage Condition	Store vial at 4° C prior to restoration. For extended storage aliquot contents and freeze at -20° C or below. Avoid cycles of freezing and thawing. Centrifuge product if not completely clear after standing at room temperature. This product is stable for several weeks at 4° C as an undiluted liquid. Dilute only prior to immediate use.
Synonyms	Goat Anti-Mouse IgM (mu chain) Antibody DyLight 649™ Conjugated, Goat Anti Mouse IgM mu chain DyLight 649™ Conjugated Antibody
Application Note	The emission spectra for this DyLight™ conjugate match the principle output wavelengths of most common fluorescence instrumentation. This product is designed for immunofluorescence microscopy, fluorescence based plate assays (FLISA) and fluorescent western blotting. This product is also suitable for multiplex analysis, including multicolor imaging, utilizing various commercial platforms.
Background	Anti-Mouse IgM DyLight antibody specifically detects mouse IgM. Immunoglobulin M is the largest antibody isotype and the first to be secreted against an initial exposure to antigen. IgM is predominantly produced in the spleen. Formed from covalently linking 5 immunoglobulins together, the approximate molecular weight of IgM is 900kDa and possesses 10 binding sites (though due to the size of most antigens, not all sites are capable of binding at once). Due to this large size, IgM is typically isolated to the serum. Anti-Mouse IgM antibody is ideal for investigators in Immunology, Microbiology, and Cell Biology.
Purity And Specificity	This product was prepared from monospecific antiserum by immunoaffinity chromatography using Mouse IgM coupled to agarose beads followed by solid phase adsorption(s) to remove any unwanted reactivities. Assay by immunoelectrophoresis resulted in a single precipitin arc against anti-Goat Serum, Mouse IgM and Mouse Serum. No reaction was observed against other mouse heavy or light chain proteins.
Assay Dilutions	User Optimized
Western Blot	>1:10,000
FLISA	>1:20,000
IF Microscopy	>1:5,000
Other Assays	User Optimized
Expiration	Expiration date is one (1) year from date of opening.
Immunogen	Mouse IgM whole molecule

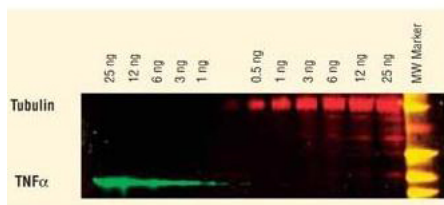
Related Products

200-301-268	Anti-AKT pS473 (MOUSE) Monoclonal Antibody - 200-301-268
B304	NORMAL GOAT SERUM (NGS) - B304
MB-070	Blocking Buffer for Fluorescent Western Blotting - MB-070

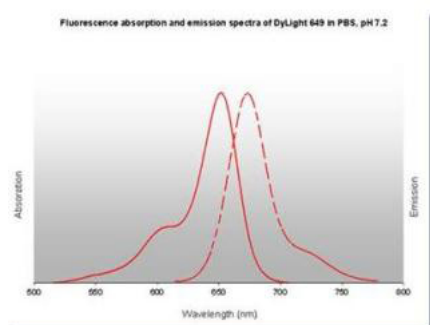
Images

1

DyLight™ dyes can be used for two-color Western Blot detection with low background and high signal. Anti-tubulin was detected using a DyLight™ 549 conjugate. Anti-TNF α was detected using a DyLight™ 649 conjugate. The image was captured using the Typhoon™ 9410 Imaging System.



2



3

Properties of DyLight™ Conjugates.

Emission	Color	DyLight™ Dye	Ex/Em (nm)	ϵ ($M^{-1} cm^{-1}$)	Similar Dyes
Blue		405	400/420	30,000	Alexa™ 405, Cascade Blue
Green		488	493/518	70,000	Alexa™ 488, Cy2®, FITC
Yellow		549	550/568	150,000	Alexa™ 546, Alexa 555, Cy3®, TRITC
Red		649	646/674	250,000	Alexa™ 647, Cy5®
Near Infrared		680	682/715	140,000	Alexa™ 680, Cy5.5®, IRDye™ 700
Infrared		800	770/794	270,000	IRDye™ 800

Disclaimer

This product is for research use only and is not intended for therapeutic or diagnostic applications. Please contact a technical service representative for more information. All products of animal origin manufactured by Rockland Immunochemicals are derived from starting materials of North American origin. Collection was performed in United States Department of Agriculture (USDA) inspected facilities and all materials have been inspected and certified to be free of disease and suitable for exportation. All properties listed are typical characteristics and are not specifications. All suggestions and data are offered in good faith but without guarantee as conditions and methods of use of our products are beyond our control. All claims must be made within 30 days following the date of delivery. The prospective user must determine the suitability of our materials before adopting them on a commercial scale. Suggested uses of our products are not recommendations to use our products in violation of any patent or as a license under any patent of Rockland Immunochemicals, Inc. If you require a commercial license to use this material and do not have one, then return this material, unopened to: Rockland Inc., P.O. BOX 5199, Limerick, Pennsylvania, USA.