



Anti-MOUSE IgG [H&L] (GOAT) Antibody CY2 Conjugated Min X Bv Ch Gt GP Ham Hs Hu Rb Rt & Sh Serum Proteins - 610-111-121

Code: 610-111-121

Size: 1 mg

Product Description: Anti-MOUSE IgG [H&L] (GOAT) Antibody CY2 Conjugated Min X Bv Ch Gt GP Ham Hs Hu Rb Rt & Sh Serum Proteins - 610-111-121

Concentration: 1.0 mg/mL by UV absorbance at 280 nm

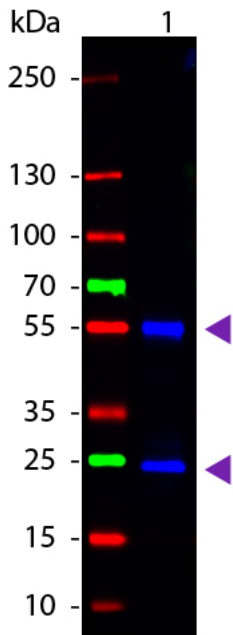
PhysicalState: Lyophilized

Label	Cy2™
Host	Goat
Emission Wavelength	505
Excitation Wavelength	489
Buffer	0.02 M Potassium Phosphate, 0.15 M Sodium Chloride, pH 7.2
Reconstitution Volume	1.0 mL
Reconstitution Buffer	Restore with deionized water (or equivalent)
Stabilizer	10 mg/mL Bovine Serum Albumin (BSA) - Immunoglobulin and Protease free
Preservative	0.01% (w/v) Sodium Azide
Storage Condition	Store Cy2 Conjugated Antibody at 4° C prior to restoration. For extended storage aliquot contents and freeze at -20° C or below. Avoid cycles of freezing and thawing. Centrifuge product if not completely clear after standing at room temperature. Cy2 Secondary Antibody is stable for several weeks at 4° C as an undiluted liquid. Dilute only prior to immediate use.
Synonyms	Goat Anti-Mouse IgG (H&L) Antibody CY2 Conjugated Pre-Adsorbed, Goat Anti Mouse IgG Antibody CY2 Conjugated
Application Note	This product is designed for immunofluorescence microscopy, fluorescence based plate assays (FLISA) and fluorescent western blotting. This product is also suitable for multiplex analysis, including multicolor imaging, utilizing various commercial platforms.
Background	Anti-Mouse IgG Cy2 Antibody generated in goat detects reactivity to Mouse IgG. Secreted as part of the adaptive immune response by plasma B cells, immunoglobulin G constitutes 75% of serum immunoglobulins. Immunoglobulin G binds to viruses, bacteria, as well as fungi and facilitates their destruction or neutralization via agglutination (and thereby immobilizing them), activation of the compliment cascade, and opsinization for phagocytosis. The whole IgG molecule possesses both the F(c) region, recognized by high-affinity Fc receptor proteins, as well as the F(ab) region possessing the epitope-recognition site. Both the Heavy and Light chains of the antibody molecule are present. Secondary Antibodies are available in a variety of formats and conjugate types. When choosing a secondary antibody product, consideration must be given to species and immunoglobulin specificity, conjugate type, fragment and chain specificity, level of cross-reactivity, and host-species source and fragment composition.
Purity And Specificity	Cy2 Conjugated Secondary Antibody was prepared from monospecific antiserum by immunoaffinity chromatography using Mouse IgG coupled to agarose beads followed by solid phase adsorption(s) to remove any unwanted reactivities and extensive dialysis against the buffer stated above. Assay by immunoelectrophoresis resulted in a single precipitin arc against anti-Goat Serum, Mouse IgG and Mouse Serum. No reaction was observed against Bovine, Chicken, Goat, Guinea Pig, Hamster, Horse, Human, Rat, Rabbit and Sheep Serum Proteins.
ELISA	User Optimized
Western Blot	User Optimized
FLISA	1:10,000 - 1:50,000
IF Microscopy	1:1,000 - 1:5,000
Flow Cytometry	1:500 - 1:2,500
Expiration	Expiration date is one (1) year from date of opening.
Immunogen	Mouse IgG whole molecule
Related Products	

B304	NORMAL GOAT SERUM (NGS) - B304
BSA-50	BOVINE SERUM ALBUMIN - Fraction V (Immunoglobulin and Protease Free) - BSA-50
MB-020	50X Tris-Acetate-EDTA (TAE) (2.0 M Tris-Acetate 0.05 M EDTA pH 8.3) - MB-020
MB-070	Blocking Buffer for Fluorescent Western Blotting - MB-070

Images

1 Western Blot of Cy2 conjugated Goat anti-Mouse IgG Pre-adsorbed secondary antibody. Lane 1: Mouse IgG. Lane 2: none. Load: 50 ng per lane. Primary antibody: none. Secondary antibody: Cy2 goat secondary antibody at 1:1,000 for 60 min at RT. Block: MB-070 for 30 min at RT. Predicted/Observed size: 25 & 55 kDa, 25 & 55 kDa for Mouse IgG. Other band(s): none.



Disclaimer

This product is for research use only and is not intended for therapeutic or diagnostic applications. Please contact a technical service representative for more information. All products of animal origin manufactured by Rockland Immunochemicals are derived from starting materials of North American origin. Collection was performed in United States Department of Agriculture (USDA) inspected facilities and all materials have been inspected and certified to be free of disease and suitable for exportation. All properties listed are typical characteristics and are not specifications. All suggestions and data are offered in good faith but without guarantee as conditions and methods of use of our products are beyond our control. All claims must be made within 30 days following the date of delivery. The prospective user must determine the suitability of our materials before adopting them on a commercial scale. Suggested uses of our products are not recommendations to use our products in violation of any patent or as a license under any patent of Rockland Immunochemicals, Inc. If you require a commercial license to use this material and do not have one, then return this material, unopened to: Rockland Inc., P.O. BOX 5199, Limerick, Pennsylvania, USA.