

Anti-MOUSE IgM (mu chain) (GOAT) Antibody - 610-1107

Code: 610-1107

Size: 2 mg

Product Description: Anti-MOUSE IgM (mu chain) (GOAT) Antibody - 610-1107

Concentration: 2.1 mg/mL by UV absorbance at 280 nm

PhysicalState: Liquid (sterile filtered)

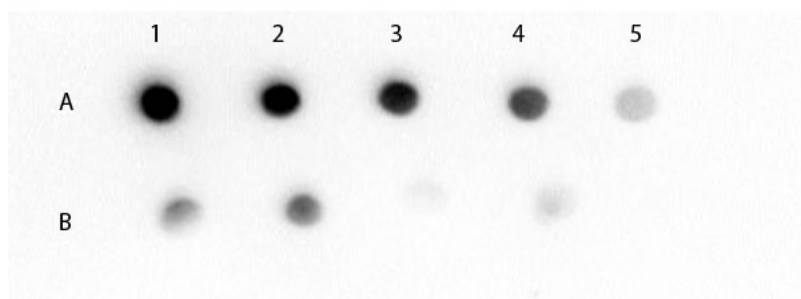
Label	Unconjugated
Host	Goat
Species Reactivity	Mouse
Buffer	0.02 M Potassium Phosphate, 0.15 M Sodium Chloride, pH 7.2
Preservative	0.01% (w/v) Sodium Azide
Storage Condition	Store vial at 4° C prior to opening. This product is stable for several weeks at 4° C as an undiluted liquid. Dilute only prior to immediate use. For extended storage aliquot contents and freeze at -20° C or below. Avoid cycles of freezing and thawing.
Synonyms	goat anti-Mouse IgM (mu chain) Antibody, Gt-a-Mouse (mu chain) antibody, Mouse IgM (mu chain) Antibody in goat, Goat anti-mouse IgM Secondary Antibody
Application Note	Anti-Mouse IgM (mu chain) is suitable for immunoblotting (western or dot blot), ELISA, and immunohistochemistry assays requiring lot-to-lot consistency.
Background	Anti-Mouse IgM (mu chain) antibody generated in goat detects specifically mouse IgM (mu chain). Immunoglobulin M is the largest antibody isotype and the first to be secreted against an initial exposure to antigen. IgM is predominantly produced in the spleen. Formed from covalently linking 5 immunoglobulins together, the approximate molecular weight of IgM is 900kDa and possesses 10 binding sites (though due to the size of most antigens, not all sites are capable of binding at once). Due to this large size, IgM is typically isolated to the serum. Anti-Mouse IgM antibody is ideal for investigators in Immunology, Microbiology, and Cell Biology.
Purity And Specificity	Anti-Mouse IgM (mu chain) was prepared from monospecific antiserum by immunoaffinity chromatography using Mouse IgM coupled to agarose followed by solid phase adsorption(s). Assay by immunoelectrophoresis resulted in a single precipitin arc against anti-Goat Serum, Mouse IgM and Mouse Serum. No reaction was observed against other mouse heavy or light chain proteins.
Assay Dilutions	User Optimized
ELISA	1:20,400 - 1:40,400
Western Blot	1:2,000 - 1:10,000
Immunohistochemistry	1:1,000 - 1:5,000
Other Assays	User Optimized
Expiration	Expiration date is one (1) year from date of opening.
Immunogen	Mouse IgM whole molecule

Related Products

610-4302	Anti-MOUSE IgG (H&L) (RABBIT) Antibody Peroxidase Conjugated - 610-4302
611-1302	Anti-RABBIT IgG (H&L) (GOAT) Antibody Peroxidase Conjugated - 611-1302
B304	NORMAL GOAT SERUM (NGS) - B304
B501-0500	BLOTTO Immunoanalytical Grade (Non-Fat Dry Milk) - B501-0500

Images

Dot Blot of Mouse IgM (mu chain) (GOAT) Antibody. Lane 1A: Mouse IgM (100 ng). Lane 1B: Mouse IgG (100 ng). Lanes 2-5: serial 3-fold dilution. Primary Antibody: Mouse IgM (mu chain) Antibody at 1 µg/mL at RT for 60 minutes. Secondary Antibody: Donkey Anti-Goat IgG Antibody HRP Conj'd (p/n 605-703-125) at 1:40,000 dilution of 1 mg/mL at RT for 30 minutes. Block: MB-070 at RT for 30 min.



Disclaimer

This product is for research use only and is not intended for therapeutic or diagnostic applications. Please contact a technical service representative for more information. All products of animal origin manufactured by Rockland Immunochemicals are derived from starting materials of North American origin. Collection was performed in United States Department of Agriculture (USDA) inspected facilities and all materials have been inspected and certified to be free of disease and suitable for exportation. All properties listed are typical characteristics and are not specifications. All suggestions and data are offered in good faith but without guarantee as conditions and methods of use of our products are beyond our control. All claims must be made within 30 days following the date of delivery. The prospective user must determine the suitability of our materials before adopting them on a commercial scale. Suggested uses of our products are not recommendations to use our products in violation of any patent or as a license under any patent of Rockland Immunochemicals, Inc. If you require a commercial license to use this material and do not have one, then return this material, unopened to: Rockland Inc., P.O. BOX 5199, Limerick, Pennsylvania, USA.