



## Anti-CHICKEN IgG (H&L) (RABBIT) Antibody Biotin Conjugated - 603-4602

**Code:** 603-4602

**Size:** 1.5 mg

**Product Description:** Anti-CHICKEN IgG (H&L) (RABBIT) Antibody Biotin Conjugated - 603-4602

**Concentration:** 1.5 mg/mL by UV absorbance at 280 nm

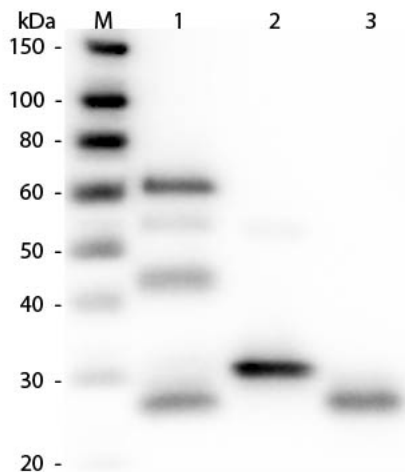
**PhysicalState:** Lyophilized

**Related Products**

**Images**

1

Western Blot of Anti-Chicken IgG (H&L) (RABBIT) Antibody (p/n 603-4102). Lane M: 3  $\mu$ l Molecular Ladder. Lane 1: Chicken IgG whole molecule (p/n 003-0102). Lane 2: Chicken IgG F(c) Fragment (p/n 003-0103). Lane 3: Chicken IgG Fab Fragment (p/n 003-0105). All samples were reduced. Load: 50 ng per lane. Block: MB-070 for 30 min at RT. Primary Antibody: Anti-Chicken IgG (H&L) (RABBIT) Antibody (p/n 603-4102) 1:3,000 for 60 min at RT. Secondary antibody: Anti-Rabbit IgG (GOAT) Peroxidase Conjugated Antibody (p/n 611-103-122) 1:40,000 in MB-070 for 30 min at RT. Predicted/Observed Size: 25 and 72 kDa for Chicken IgG, 25 kDa for F(c) and Fab. Chicken F(c) migrates slightly higher.

**Disclaimer**

This product is for research use only and is not intended for therapeutic or diagnostic applications. Please contact a technical service representative for more information. All products of animal origin manufactured by Rockland Immunochemicals are derived from starting materials of North American origin. Collection was performed in United States Department of Agriculture (USDA) inspected facilities and all materials have been inspected and certified to be free of disease and suitable for exportation. All properties listed are typical characteristics and are not specifications. All suggestions and data are offered in good faith but without guarantee as conditions and methods of use of our products are beyond our control. All claims must be made within 30 days following the date of delivery. The prospective user must determine the suitability of our materials before adopting them on a commercial scale. Suggested uses of our products are not recommendations to use our products in violation of any patent or as a license under any patent of Rockland Immunochemicals, Inc. If you require a commercial license to use this material and do not have one, then return this material, unopened to: Rockland Inc., P.O. BOX 5199, Limerick, Pennsylvania, USA.