

## Anti-CYANINE (SHEEP) Antibody Alkaline Phosphatase Conjugated - 600-605-209

**Code:** 600-605-209

**Size:** 1 mg

**Product Description:** Anti-CYANINE (SHEEP) Antibody Alkaline Phosphatase Conjugated - 600-605-209

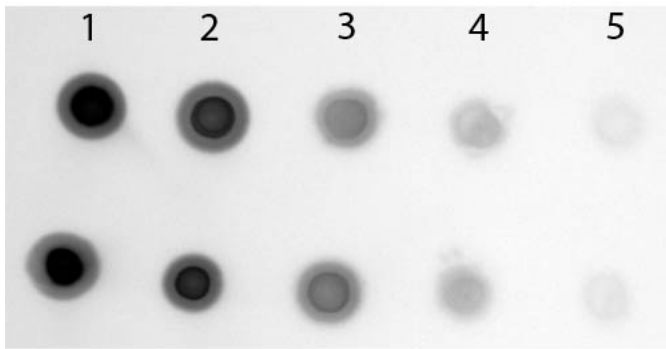
**Concentration:** 1.0 mg/mL by UV absorbance at 280 nm

**PhysicalState:** Liquid (sterile filtered)

<b>Label</b>	Alkaline Phosphatase (Calf Intestine)
<b>Host</b>	Sheep
<b>Buffer</b>	0.05 M Tris Chloride, 0.15M Sodium Chloride, 0.001M Magnesium Chloride, 0.0001M Zinc Chloride, 50% (v/v) Glycerol; pH 8.0
<b>Stabilizer</b>	10 mg/mL Bovine Serum Albumin (BSA) - Immunoglobulin and Protease free
<b>Preservative</b>	0.01% (w/v) Sodium Azide
<b>Storage Condition</b>	Store vial at 4° C before opening. DO NOT FREEZE. This product is stable at 4° C as an undiluted liquid. Dilute only prior to immediate use. Freezing alkaline phosphatase conjugates will result in a substantial loss of enzymatic activity.
<b>Synonyms</b>	sheep anti-Cyanine Antibody alkaline phosphatase Conjugation, alk phos conjugated sheep anti-Cyanine Antibody
<b>Application Note</b>	This product has been assayed against 1.0 ug of Cyanine IgG in a standard capture ELISA using pNPP p-nitrophenyl phosphate code # NPP-10 as a substrate for 30 minutes at room temperature. A working dilution of 1:700 to 1:2,800 of the reconstitution concentration is suggested for this product.
<b>Background</b>	Cyanine is a synthetic family of dyes that can cover the spectrum from infrared to ultraviolet light. Cyanine is useful in protein and nucleic acid labeling. This Anti-Cyanine Antibody is conjugated to Alkaline Phosphatase. Anti-Cyanine (sheep) antibody is ideal for investigators in Cell Biology, Immunology, and Microbiology research.
<b>Purity And Specificity</b>	This product was prepared from monospecific antiserum by immunoaffinity chromatography using a cyanine BSA conjugate coupled to agarose beads followed by solid phase adsorption(s) to remove any unwanted reactivities. Assay by immunoelectrophoresis resulted in a single precipitin arc against anti-Alkaline Phosphatase (calf intestine), anti-Sheep Serum and cyanine conjugated IgG. Reactivity was observed against Cy2, Cy3 and Cy5. Reactivity against other cyanine analogs is unknown.
<b>ELISA</b>	1:2,000 - 1:10,000
<b>Western Blot</b>	1:500 - 1:2,500
<b>Immunohistochemistry</b>	1:200 - 1:1,000
<b>Expiration</b>	Expiration date is one (1) year from date of opening.
<b>Immunogen</b>	A mixture of Cy3 and Cy5 conjugated KLH
<b>Related Products</b>	
	200-301-268 Anti-AKT pS473 (MOUSE) Monoclonal Antibody - 200-301-268
	610-4302 Anti-MOUSE IgG (H&L) (RABBIT) Antibody Peroxidase Conjugated - 610-4302
	611-1302 Anti-RABBIT IgG (H&L) (GOAT) Antibody Peroxidase Conjugated - 611-1302
	B304 NORMAL GOAT SERUM (NGS) - B304

### Images

1	Dot Blot of Sheep anti-Cyanine Antibody Alkaline Phosphatase Conjugated. Antigen: Row 1 - Cy3 Streptavidin Conjugated Row 2 - Cy5 Streptavidin Conjugated. Load: Lane 1 - 200 ng Lane 2 - 66.67 ng Lane 3 - 22.22 ng Lane 4 - 7.41 ng Lane 5 - 2.47 ng. Primary antibody: none. Secondary antibody: Sheep anti-Cyanine Antibody Alkaline Phosphatase Conjugated at 1:1,000 for 60 min at RT. Block: MB-070 for 1 HR at RT. Visualized using NBT-100 Alkaline Phosphatase Substrate for 30 seconds at RT.
---	--



### Disclaimer

This product is for research use only and is not intended for therapeutic or diagnostic applications. Please contact a technical service representative for more information. All products of animal origin manufactured by Rockland Immunochemicals are derived from starting materials of North American origin. Collection was performed in United States Department of Agriculture (USDA) inspected facilities and all materials have been inspected and certified to be free of disease and suitable for exportation. All properties listed are typical characteristics and are not specifications. All suggestions and data are offered in good faith but without guarantee as conditions and methods of use of our products are beyond our control. All claims must be made within 30 days following the date of delivery. The prospective user must determine the suitability of our materials before adopting them on a commercial scale. Suggested uses of our products are not recommendations to use our products in violation of any patent or as a license under any patent of Rockland Immunochemicals, Inc. If you require a commercial license to use this material and do not have one, then return this material, unopened to: Rockland Inc., P.O. BOX 5199, Limerick, Pennsylvania, USA.