

Anti-Collagen Type I (RABBIT) Antibody Biotin Conjugated - 600-406-103

Code: 600-406-103

Size: 100 µg

Product Description: Anti-Collagen Type I (RABBIT) Antibody Biotin Conjugated - 600-406-103

Concentration: 1.0 mg/mL by UV absorbance at 280 nm

PhysicalState: Lyophilized

Label	Biotin
Host	Rabbit
Gene Name	COL1A1
Species Reactivity	human, bovine, rat, mouse
Buffer	0.02 M Potassium Phosphate, 0.15 M Sodium Chloride, pH 7.2
Reconstitution Volume	100 µL
Reconstitution Buffer	Restore with deionized water (or equivalent)
Stabilizer	10 mg/mL Bovine Serum Albumin (BSA) - Immunoglobulin and Protease free
Preservative	0.01% (w/v) Sodium Azide
Storage Condition	Store vial at 4° C prior to restoration. Restore with 0.1 mL of deionized water (or equivalent). For extended storage aliquot contents and freeze at -20° C or below. Avoid cycles of freezing and thawing. Centrifuge product if not completely clear after standing at room temperature. This product is stable for several weeks at 4° C as an undiluted liquid. Dilute only prior to immediate use. Expiration date is one (1) year from date of restoration.
Synonyms	rabbit anti-collagen type I antibody biotin conjugation, biotin conjugated rabbit anti-collagen type I antibody, Collagen Of Skin Tendon And Bone, Collagen Type 1 antibody, Collagen type I alpha 1 antibody, Collagen alpha-1 (I) chain, Alpha-1 type I collagen, type 1 procollagen alpha 1
Application Note	Anti-COLLAGEN Type I Antibody Biotin Conjugated is suitable for western blot, immunoprecipitation, Flow Cytometry, and immunohistochemistry. Researchers should determine optimal titers for applications that are not stated below.
Background	COLLAGEN Type I Antibody Biotin Conjugated is specific for Collagen Type I. Collagen Type I (Type-I collagen) is the most abundant collagen of the human body. It is present in scar tissue, the end product when tissue heals by repair. It is also found in tendons, the endomysium of myofibrils and the organic part of bone. Anti-collagen Type I antibody is suitable for Cancer research and other general research.
Purity And Specificity	This product has been prepared by immunoaffinity chromatography using immobilized antigens followed by extensive cross-adsorption against other collagens, human serum proteins and non-collagen extracellular matrix proteins to remove any unwanted specificities. Typically negligible cross reactivity against other types of collagens was detected by ELISA against purified standards. Some class specific anti-collagens may be specific for three-dimensional epitopes which may result in diminished reactivity with denatured collagen or formalin-fixed, paraffin embedded tissues. This antibody reacts with most mammalian Type I collagens and has negligible cross-reactivity with Type II, III, IV, V and VI collagens. Non-specific cross-reaction of anti-collagen antibodies with other human serum proteins or non-collagen extracellular matrix proteins is negligible.
Assay Dilutions	User Optimized
ELISA	1:3,000 - 1:6,000
Western Blot	1:3,000 - 1:6,000
Immunohistochemistry	1:50 - 1:200
Flow Cytometry	User Optimized
Other Assays	User Optimized
Expiration	Expiration date is one (1) year from date of opening.
Immunogen	Collagen Type I from human and bovine placenta.
Related Products	

009-001-103 Human COLLAGEN Type I - 009-001-103
600-401-103-0.5 Anti-Collagen Type I (RABBIT) Antibody - 600-401-103-0.5
611-1302 Anti-RABBIT IgG (H&L) (GOAT) Antibody Peroxidase Conjugated - 611-1302

Related Links

NCBI - P02452.5

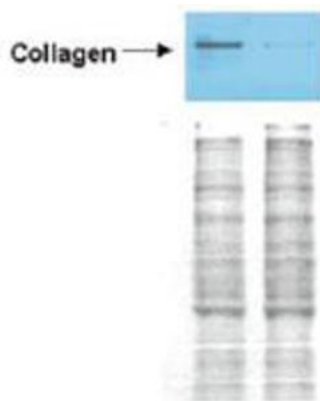
<http://www.ncbi.nlm.nih.gov/protein/P02452.5>

UniProtKB - P02452 <http://www.uniprot.org/uniprot/P02452>

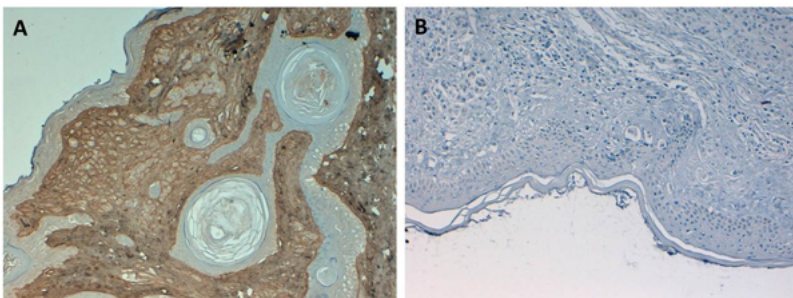
GeneID - 1277

Images

- 1 Western Blot of Rabbit anti-Collagen I antibody. Lane 1: Wistar rat hepatic stellate cells (HSC) in control (GFP-transduced). Lane 2: PPAR γ -transduced cell lysates. Load: 100 μ g per lane. Protein staining shown below western blot depicts equal protein loading. Primary antibody: anti-Collagen I antibody at 0.2–2 μ g/10 ml for overnight at 4°C. Secondary antibody: horseradish peroxidase-conjugated rabbit secondary antibody at 1 μ g/10 ml for overnight at 4°C. Block: TBS with 5% Non-fat milk. Predicted/Observed size: 138.9 kDa for Collagen I. Other band(s): none.

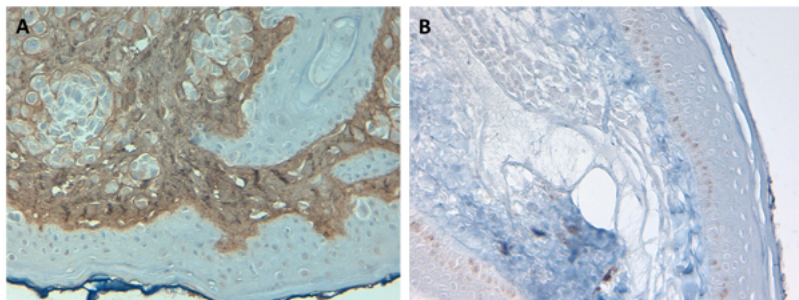


- 2 Immunohistochemistry of Rabbit Anti-Collagen Type I Antibody. Tissue: Human Skin at pH6. Fixation: formalin fixed paraffin embedded. Antigen retrieval: not required. Primary antibody: Collagen Type I antibody at 10 μ g/mL for 1 h at RT. Secondary antibody: Peroxidase rabbit secondary antibody at 1:10,000 for 45 min at RT. Localization: Collagen Type I is secreted in the extracellular matrix. Staining: Collagen Type I as precipitated brown signal (A) with hematoxylin purple nuclear counterstain. With corresponding negative control (B).



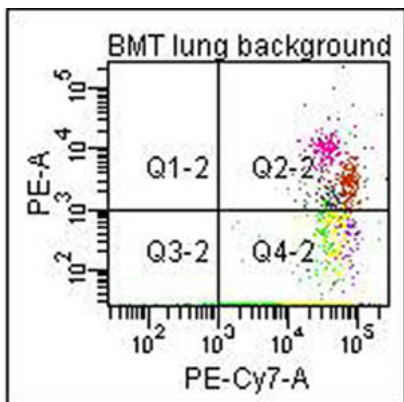
3

Immunohistochemistry of Rabbit Anti-Collagen Type I Antibody. Tissue: Human Skin at pH9. Fixation: formalin fixed paraffin embedded. Antigen retrieval: not required. Primary antibody: Collagen Type I antibody at 10 µg/mL for 1 h at RT. Secondary antibody: Peroxidase rabbit secondary antibody at 1:10,000 for 45 min at RT. Localization: Collagen Type I is secreted in the extracellular matrix. Staining: Collagen Type I as precipitated brown signal (A) with hematoxylin purple nuclear counterstain. With corresponding negative control (B).



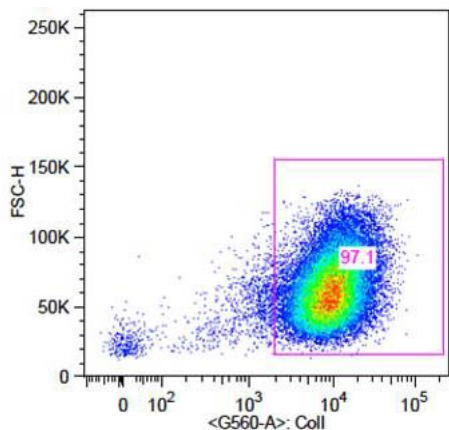
4

Flow Cytometry of Anti-Collagen Type I Biotin Conjugated Antibody. Cells: mouse lung. Stimulation: none. Primary antibody: biotin conjugated anti-collagen type I antibody. Secondary antibody: PE-conjugated CD45 and PE-conjugated anti-collagen type I secondary antibody.



5

Flow Cytometry of Rabbit Anti-Collagen 1 Antibody. Cells: primary adult human dermal fibroblast cells. Stimulation: none. Primary antibody: Biotin-Conjugated Collagen 1 antibody at 5 µg/mL for 45 min at 4°C. Secondary antibody: Rabbit Streptavidin, R-PE antibody at 1:500 for 15 min at RT.



This product is for research use only and is not intended for therapeutic or diagnostic applications. Please contact a technical service representative for more information. All products of animal origin manufactured by Rockland Immunochemicals are derived from starting materials of North American origin. Collection was performed in United States Department of Agriculture (USDA) inspected facilities and all materials have been inspected and certified to be free of disease and suitable for exportation. All properties listed are typical characteristics and are not specifications. All suggestions and data are offered in good faith but without guarantee as conditions and methods of use of our products are beyond our control. All claims must be made within 30 days following the date of delivery. The prospective user must determine the suitability of our materials before adopting them on a commercial scale. Suggested uses of our products are not recommendations to use our products in violation of any patent or as a license under any patent of Rockland Immunochemicals, Inc. If you require a commercial license to use this material and do not have one, then return this material, unopened to: Rockland Inc., P.O. BOX 5199, Limerick, Pennsylvania, USA.