



Anti-6X HIS EPITOPE TAG (RABBIT) Antibody - 600-401-382

Code: 600-401-382

Size: 100 µg

Product Description: Anti-6X HIS EPITOPE TAG (RABBIT) Antibody - 600-401-382

Concentration: 1.1 mg/mL by UV absorbance at 280 nm

PhysicalState: Liquid (sterile filtered)

Label	Unconjugated
Host	Rabbit
Buffer	0.02 M Potassium Phosphate, 0.15 M Sodium Chloride, pH 7.2
Stabilizer	None
Preservative	0.01% (w/v) Sodium Azide
Storage Condition	Store vial at -20° C prior to opening. Aliquot contents and freeze at -20° C or below for extended storage. Avoid cycles of freezing and thawing. Centrifuge product if not completely clear after standing at room temperature. This product is stable for several weeks at 4° C as an undiluted liquid. Dilute only prior to immediate use.
Synonyms	rabbit anti-6X HIS EPITOPE TAG Antibody, anti-HIS, HIS Antibody, 6X His Tag Antibody, HHHHHH epitope tag antibody
Application Note	Anti-6X His is optimally suited for monitoring expression of His-tagged fusion proteins. As such, anti-6X His/6X His can be used to identify fusion proteins that contain the 6X His epitope. The antibody recognizes the His tag fused either to the amino- or carboxy- termini of targeted proteins. This antibody has been tested by ELISA and western blotting against both the immunizing peptide and His-containing recombinant proteins. Although not tested, this antibody is likely functional for immunoprecipitation and immunocytochemistry.
Background	Epitope tags are short peptide sequences that are easily recognized by tag-specific antibodies. Due to their small size, epitope tags do not affect the tagged protein's biochemical properties. Most often sequences encoding the epitope tag are included with target DNA at the time of cloning to produce fusion proteins containing the epitope tag sequence. This allows Anti epitope tag antibodies to serve as universal detection reagents for any tag containing protein produced by recombinant means. This means that anti-epitope tag antibodies are a useful alternative to generating specific antibodies to identify, immunoprecipitate or immunoaffinity purify a recombinant protein. The anti-epitope tag antibody is usually functional in a variety of antibody-dependent experimental procedures. Expression vectors producing epitope tag fusion proteins are available for a variety of host expression systems including bacteria, yeast, insect and mammalian cells. Rockland Immunochemicals produces anti-epitope tag antibodies against many common epitope tags including Myc, GST, GFP, 6X His, MBP, FLAG and HA. Rockland Immunochemicals also produces antibodies to other tags including FITC, Rhodamine (TRITC), DNP and biotin.
Purity And Specificity	This affinity purified antibody is directed against the 6X His motif and is useful in determining its presence in various assays. This polyclonal anti-6X His tag antibody detects over-expressed proteins containing the 6X His epitope tag. To date, this antibody has reacted with all His tagged proteins so far tested. In western blotting of bacterial extracts, the antibody does not cross-react with endogenous proteins. The antibody recognizes the His-tag (His-His-His-His-His-His) fused to either the amino- or carboxy- termini of targeted proteins in transfected or transformed cells.
Assay Dilutions	User Optimized
ELISA	1:10,000 - 1:40,000
Western Blot	1:500 - 1:1,000
Immunohistochemistry	1:500 - 1:2,000
Other Assays	User Optimized
Expiration	Expiration date is one (1) year from date of opening.
Immunogen	This antibody was purified from whole rabbit serum prepared by repeated immunizations with 6X His epitope tag peptide H-H-H-H-H-H conjugated to KLH using maleimide.

Specific Reference

Yi CE, Ba L, Zhang L, Ho DD, Chen Z. (2005) Single amino acid substitutions in the severe acute respiratory syndrome coronavirus spike glycoprotein determine viral entry and immunogenicity of a major neutralizing domain. *J Virol.* Sep;79(18):11638-46.

Lecona E, Rodriguez-Acebes S, Specks J, Lopez-Contreras AJ, Ruppen I, Murga M, Muñoz J, Mendez J, Fernandez-Capetillo O. (2016) USP7 is a SUMO deubiquitinase essential for DNA replication. *Nat Struct Mol Biol.* 2016 Apr;23(4):270-7. doi: 10.1038/nsmb.3185. Epub 2016 Mar 7.

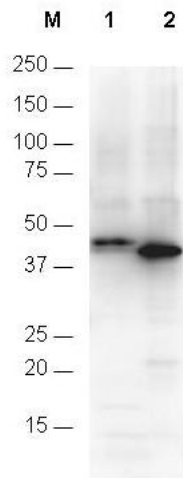
Niederkofler V, Baeriswyl T, Ott R, Stoeckli ET. (2010) Nectin-like molecules/SynCAMs are required for post-crossing commissural axon guidance. *Development.* 2010 Feb;137(3):427-35. doi: 10.1242/dev.042515. Epub 2010 Jan 7.

Related Products

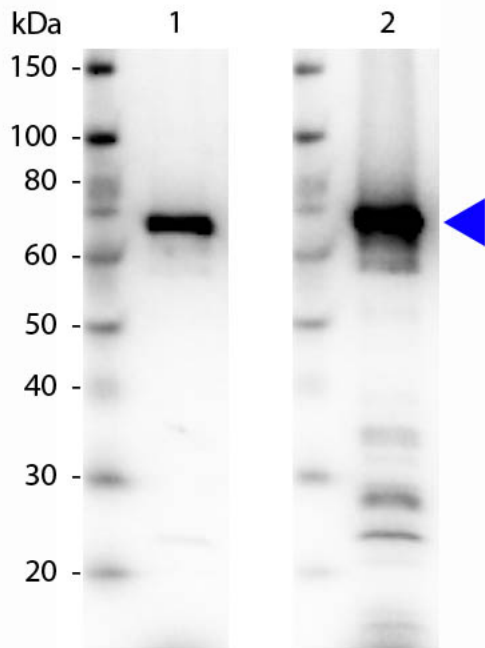
200-301-268	Anti-AKT pS473 (MOUSE) Monoclonal Antibody - 200-301-268
610-4302	Anti-MOUSE IgG (H&L) (RABBIT) Antibody Peroxidase Conjugated - 610-4302
611-1302	Anti-RABBIT IgG (H&L) (GOAT) Antibody Peroxidase Conjugated - 611-1302
B304	NORMAL GOAT SERUM (NGS) - B304

Images

- 1 Anti-6X His epitope tag polyclonal antibody detects His-tagged recombinant proteins by western blot. The blot was blocked with 3% BSA in TBST for 45 min at RT. Antibody was incubated with blot at a 1:1,000 dilution in TBST with 3% BSA for 1 hour at RT. Detection occurred using HRP Gt-a-Rabbit IgG (p/n 611-103-127) diluted 1:80,000 in blocking buffer (p/n MB-070) for 30 min at RT. Lane 1 was loaded with 12-Epitope Tag Protein Marker Lysate (p/n MB-301-0100) which has the His epitope tag incorporated through a C-terminal linkage (~42 kDa). Lane 2 was loaded with His-SUMO-GFP recombinant protein which has the His epitope tag incorporated through an N-terminal linkage (~40 kDa). A 4-20% gradient gel was used to resolve the protein by SDS-PAGE. Proteins were transferred to nitrocellulose using standard methods. Molecular weights were estimated by comparison to standards (lane M).



- 2 Western blot of Rabbit Anti-6xHIS Epitope Tag antibody. Lane: NRF1-HIS recombinant protein. Load: 50 ng per lane. Primary antibody - 1: NRF1 antibody at 1:1,000 overnight at 4°C. Primary antibody - 2: 6xHIS Epitope tag antibody at 1:1,000 overnight at 4°C. Secondary antibody: Peroxidase rabbit secondary antibody at 1:40,000 for 30 min at RT. Blocking: MB-070 for 30 min at RT. Predicted/observed size: 67 kDa, 67 kDa for NRF1-His tagged. Other band(s): None.



Disclaimer

This product is for research use only and is not intended for therapeutic or diagnostic applications. Please contact a technical service representative for more information. All products of animal origin manufactured by Rockland Immunochemicals are derived from starting materials of North American origin. Collection was performed in United States Department of Agriculture (USDA) inspected facilities and all materials have been inspected and certified to be free of disease and suitable for exportation. All properties listed are typical characteristics and are not specifications. All suggestions and data are offered in good faith but without guarantee as conditions and methods of use of our products are beyond our control. All claims must be made within 30 days following the date of delivery. The prospective user must determine the suitability of our materials before adopting them on a commercial scale. Suggested uses of our products are not recommendations to use our products in violation of any patent or as a license under any patent of Rockland Immunochemicals, Inc. If you require a commercial license to use this material and do not have one, then return this material, unopened to: Rockland Inc., P.O. BOX 5199, Limerick, Pennsylvania, USA.