

Anti-Laminin (Human) (RABBIT) Antibody - 600-401-116-0.5

Code: 600-401-116-0.5

Size: 500 µg

Product Description: Anti-Laminin (Human) (RABBIT) Antibody - 600-401-116-0.5

Concentration: 1.0 mg/mL by UV absorbance at 280 nm

PhysicalState: Liquid (sterile filtered)

Label	Unconjugated
Host	Rabbit
Gene Name	LAMA1/LAMB1
Species Reactivity	human
Buffer	0.125 M Sodium Borate, 0.075 M Sodium Chloride, 0.005 M EDTA, pH 8.0
Stabilizer	None
Preservative	0.01% (w/v) Sodium Azide
Storage Condition	Store vial at 4° C prior to opening. This product is stable at 4° C as an undiluted liquid. Dilute only prior to immediate use. For extended storage, mix with an equal volume of glycerol, aliquot contents and freeze at -20° C or below. Avoid cycles of freezing and thawing.
Synonyms	rabbit anti-Laminin antibody, LAMA1 antibody, LAMB1 antibody, Laminin A chain antibody, Laminin alpha 1 antibody, Laminin alpha 1 chain antibody, Laminin B1 chain antibody, Laminin subunit beta 1 antibody
Application Note	Anti-Laminin antibody is suitable for western blotting, IHC, IP and for ELISA. Researchers should determine optimal titers for applications that are not stated below.
Background	Anti-Laminin detects laminin. Laminins are an important and biologically active part of the basal lamina, influencing cell differentiation, migration, adhesion as well as phenotype and survival. The laminins are a family of glycoproteins that are an integral part of the structural scaffolding in almost every tissue of an organism. They are secreted and incorporated into cell-associated extracellular matrices. Defective laminins can cause muscles to form improperly, leading to a form of muscular dystrophy, lethal skin blistering disease and defects of the kidney filter. Anti-Laminin Antibody is ideal for investigators involved in Cell Signaling and Signal Transduction research.
Purity And Specificity	Anti-Laminin has been prepared by immunoaffinity chromatography using immobilized human placental laminin followed by extensive cross-adsorption against human serum proteins and collagen and non-collagen extracellular matrix proteins to remove any unwanted specificities. Typically less than 1% cross-reactivity against other extracellular matrix proteins was detected by ELISA against purified standards. This antibody reacts with most mammalian Laminins and has negligible cross-reactivity with Type I, II, III, IV, V or VI Collagens or Fibronectin. Non-specific cross-reaction of anti-Laminin antibodies with other human serum proteins or non-Laminin extracellular matrix proteins is negligible.
Assay Dilutions	User Optimized
ELISA	1:4,000 - 1:8,000
Western Blot	1:500 - 1:2,000
Immunohistochemistry	1:50 - 1:200
Other Assays	User Optimized
Expiration	Expiration date is one (1) year from date of opening.
Immunogen	Anti-Laminin Antibody was produced by repeated immunizations with a mixture of synthetic peptides corresponding to regions of adherence on laminin.
General Reference	Timpl R et al. (1979). "Laminin – a glycoprotein from basement membranes". J Biol Chem 254 (19): 9933–7

Related Products

600-401-116-0.1	Anti-Laminin (Human) (RABBIT) Antibody - 600-401-116-0.1
600-406-116	Anti-Laminin (RABBIT) Antibody Biotin Conjugated - 600-406-116
611-1302	Anti-RABBIT IgG (H&L) (GOAT) Antibody Peroxidase Conjugated - 611-1302

B304

NORMAL GOAT SERUM (NGS) - B304

Related Links

NCBI - AAA59486.1

<http://www.ncbi.nlm.nih.gov/protein/AAA59486.1>

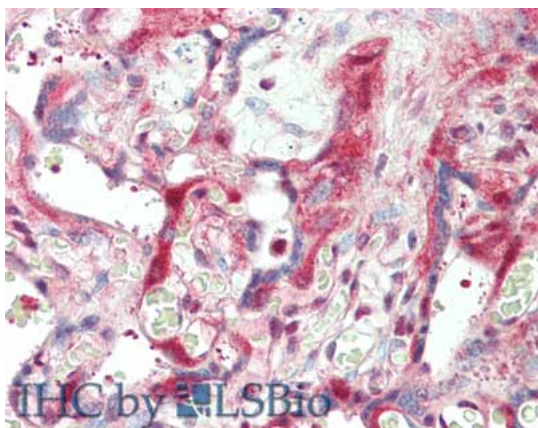
UniProtKB - P07942

<http://www.uniprot.org/uniprot/P07942>

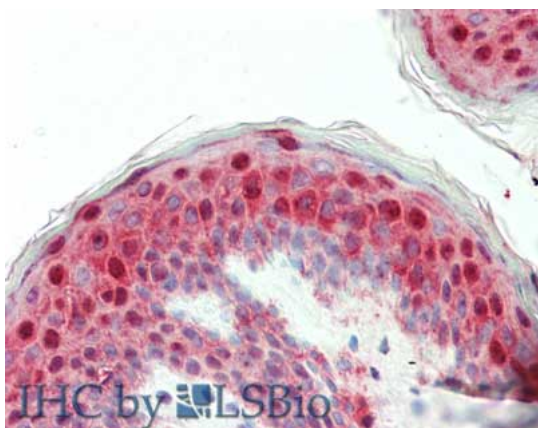
GenID - 3912

Images

- 1 Immunohistochemistry of rabbit anti-Laminin antibody. Tissue: skin. Fixation: formalin fixed paraffin embedded. Antigen retrieval: not required. Primary antibody: Anti-Laminin at 5 $\mu\text{g}/\text{mL}$ for 1 h at RT. Secondary antibody: Peroxidase rabbit secondary antibody at 1:10,000 for 45 min at RT. Staining: Laminin as precipitated red signal with hematoxylin purple nuclear counterstain.



- 2 Immunohistochemistry of rabbit anti-Laminin antibody. Tissue: Placenta. Fixation: formalin fixed paraffin embedded. Antigen retrieval: not required. Primary antibody: Anti-Laminin at 5 $\mu\text{g}/\text{mL}$ for 1 h at RT. Secondary antibody: Peroxidase rabbit secondary antibody at 1:10,000 for 45 min at RT. Staining: Laminin as precipitated red signal with hematoxylin purple nuclear counterstain.



Disclaimer

This product is for research use only and is not intended for therapeutic or diagnostic applications. Please contact a technical service representative for more information. All products of animal origin manufactured by Rockland Immunochemicals are derived from starting materials of North American origin. Collection was performed in United States Department of Agriculture (USDA) inspected facilities and all materials have been inspected and certified to be free of disease and suitable for exportation. All properties listed are typical characteristics and are not specifications. All suggestions and data are offered in good faith but without guarantee as conditions and methods of use of our products are beyond our control. All claims must be made within 30 days following the date of delivery. The prospective user must determine the suitability of our materials before adopting them on a commercial scale. Suggested uses of our products are not recommendations to use our products in violation of any patent or as a license under any patent of Rockland Immunochemicals, Inc. If you require a commercial license to use this material and do not have one, then return this material, unopened to: Rockland Inc., P.O. BOX 5199, Limerick, Pennsylvania, USA.