

Anti-Collagen Type II (RABBIT) Antibody - 600-401-104-0.5

Code: 600-401-104-0.5

Size: 500 µg

Product Description: Anti-Collagen Type II (RABBIT) Antibody - 600-401-104-0.5

Concentration: 1.0 mg/mL by UV absorbance at 280 nm

PhysicalState: Liquid (sterile filtered)

Label	Unconjugated
Host	Rabbit
Gene Name	COL2A1
Species Reactivity	human, mouse, rat, bovine, sheep
Buffer	0.125 M Sodium Borate, 0.075 M Sodium Chloride, 0.005 M EDTA, pH 8.0
Stabilizer	None
Preservative	0.01% (w/v) Sodium Azide
Storage Condition	Store vial at 4° C prior to opening. This product is stable at 4° C as an undiluted liquid. Dilute only prior to immediate use. For extended storage, mix with an equal volume of glycerol, aliquot contents and freeze at -20° C or below. Avoid cycles of freezing and thawing.
Synonyms	rabbit anti-Collagen Type II antibody, Collagen alpha-1 (II) chain, Alpha-1 type II collagen, Cartilage collagen antibody, Chondrocalcin antibody, COL2A1 antibody
Application Note	Anti-Collagen antibodies have been used for indirect trapping ELISA for quantitation of antigen in serum using a standard curve, immunoprecipitation, immunohistochemistry, native (non-denaturing, non-dissociating) PAGE and western blotting for highly sensitive qualitative analysis.
Background	Rockland produces highly active antibodies and conjugates to collagens. Collagens are highly conserved throughout evolution and are characterized by an uninterrupted "Glycine-X-Y" triplet repeat that is a necessary part of the triple helical structure. For these reasons, it is often extremely difficult to generate antibodies with specificities to collagens. The development of 'type' specific antibodies is dependent on NON-DENATURED three-dimensional epitopes. Rockland extensively purifies collagens for immunization from human and bovine placenta and cartilage by limited pepsin digestion and selective salt precipitation. This preparation results in a native conformation of the protein. Antibodies are isolated from rabbit antiserum and are extensively cross-adsorbed by immunoaffinity purification to produce 'type' specific antibodies. Greatly diminished reactivity and selectivity of these antibodies will result if denaturing and reducing conditions are used for SDS-PAGE and immunoblotting. Ideal for investigators involved in Cell Biology, Signal Transduction and Stem Cell research.
Purity And Specificity	Collagen II Antibody has been prepared by immunoaffinity chromatography using immobilized antigens followed by extensive cross-adsorption against other collagens, human serum proteins and non-collagen extracellular matrix proteins to remove any unwanted specificities. Typically negligible cross reactivity against other types of collagens was detected by ELISA against purified standards. Some class specific anti-collagens may be specific for three-dimensional epitopes which may result in diminished reactivity with denatured collagen or formalin-fixed, paraffin embedded tissues. This antibody reacts with most mammalian Type II collagens and has negligible cross-reactivity with Type I, III, IV, V or VI collagens. Non-specific cross reaction of anti-collagen antibodies with other human serum proteins or non-collagen extracellular matrix proteins is negligible.
Assay Dilutions	User Optimized
ELISA	1:5,000 - 1:50,000
Western Blot	1:1,000 - 1:10,000
Immunohistochemistry	1:50 - 1:400
Other Assays	User Optimized
Expiration	Expiration date is one (1) year from date of opening.
Immunogen	Collagen Type II from human knee cartilage and bovine nasal cartilage.
Specific Reference	Shunya Kondo, Chisa Shukunami, Yoko Morioka, Naoya Matsumoto, Rei Takahashi, Junseo Oh, Tadao Atsumi, Akihiro Umezawa, Akira Kudo, Hitoshi Kitayama, Yuji Hiraki, Makoto Noda. (2007) Dual effects of the membrane-anchored MMP regulator RECK on chondrogenic differentiation of ATDC5 cells. Journal of Cell Science 120, 849-857. doi:10.1242/jcs.03388.
Related Products	

001-001-104	Bovine COLLAGEN Type II (NASAL CARTILAGE) - 001-001-104
009-001-104	Human COLLAGEN Type II (ADULT KNEE CARTILAGE) - 009-001-104
600-401-104-0.1	Anti-Collagen Type II (RABBIT) Antibody - 600-401-104-0.1
600-406-104	Anti-Collagen Type II (RABBIT) Antibody Biotin Conjugated - 600-406-104

Related Links

UniProtKB - P02458

<http://www.uniprot.org/uniprot/P02458>

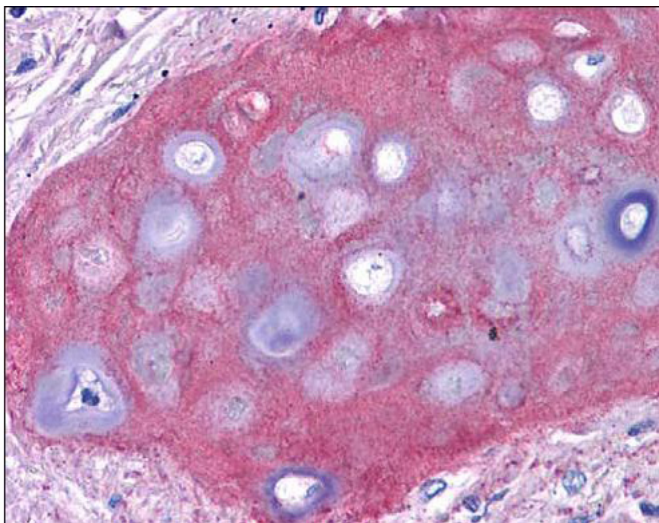
NCBI - P02458.3 <http://www.ncbi.nlm.nih.gov/protein/P02458.3>

GenID - 1280

Images

1

Rockland anti collagen II antibody (600-401-104 Lot 26014, 1:400, 45 min RT) showed moderate staining of in FFPE human bronchiolar cartilage (shown in image). Though not shown, faint to moderate staining of tonsillar squamous epithelium, prostatic stroma, breast, colon, placenta, and dermal connective tissues was also observed. All other tissues, including brain, breast epithelium, colon epithelium, heart, intestine, kidney, liver, lung, skeletal muscle, pancreas, spleen, testis, thymus, thyroid, and uterus were negative for staining Slides were steamed in 0.01 M sodium citrate buffer, pH 6.0 at 99-100°C - 20 minutes for antigen retrieval. Image provided courtesy of LifeSpan Biosciences, Seattle, WA



Disclaimer

This product is for research use only and is not intended for therapeutic or diagnostic applications. Please contact a technical service representative for more information. All products of animal origin manufactured by Rockland Immunochemicals are derived from starting materials of North American origin. Collection was performed in United States Department of Agriculture (USDA) inspected facilities and all materials have been inspected and certified to be free of disease and suitable for exportation. All properties listed are typical characteristics and are not specifications. All suggestions and data are offered in good faith but without guarantee as conditions and methods of use of our products are beyond our control. All claims must be made within 30 days following the date of delivery. The prospective user must determine the suitability of our materials before adopting them on a commercial scale. Suggested uses of our products are not recommendations to use our products in violation of any patent or as a license under any patent of Rockland Immunochemicals, Inc. If you require a commercial license to use this material and do not have one, then return this material, unopened to: Rockland Inc., P.O. BOX 5199, Limerick, Pennsylvania, USA.