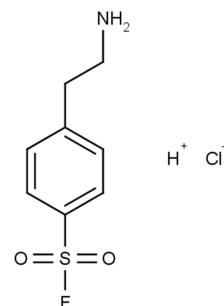


Pefabloc® SC

Catalog No:	50985
Lot No:	XXXXXX
Cas No:	30827-99-7
Formula:	C ₈ H ₁₀ FNO ₂ S · HCl
MW:	239.7
Supplied as:	solid
Stability:	store at 4°C, protect from light and moisture



Background

Pefabloc® SC is a water soluble, irreversible serine protease inhibitor. It inhibits proteases like chymotrypsin, kallikrein, plasmin, thrombin, and trypsin. The specificity is similar to the inhibitor PMSF, nevertheless Pefabloc® SC is more stable at low pH values. Store stock solutions (100 mM in water) for up to 2 months at -20°C or at 4°C for 1 week.

Tests

Appearance:**Thin-layer chromatography:****Solubility in water (c=0.2% m/V):****Purity by RP-HPLC:****Melting point:****IC50 trypsin inhibition:****IC50 chymotrypsin inhibition:****MS-ESI [M+H]:****Carbon (calc. 40.08%):****Hydrogen (calc. 4.59%):****Nitrogen (calc. 5.84%):****Sulfur (calc. 13.38%):****¹H-NMR spectrum:**

Specifications

colorless or white to off-white powder

corresponds to reference chromatogram

completely soluble

≥95 rel. area-%

report value

report value

report value

204.0 +/- 1.0

39.69 – 40.49%

4.23 – 5.03%

5.5 – 6.30%

12.98 – 13.78%

corresponds to reference spectrum

Trademark

Pefabloc® is a trademark of DSM Pentafarm.

Usage

This product is offered by Biomol for research purposes only. Not for diagnostic purposes or human use. It may not be resold or used to manufacture commercial products without written approval of Biomol GmbH.

CONTACT US TODAY

BIOMOL GmbH • Kieler Straße 303a • 22525 Hamburg • Germany • info@biomol.de • www.biomol.de

Fon: +49 (0)40-853 260 0 • TOLL FREE IN GERMANY: Fon: 0800-246 66 51