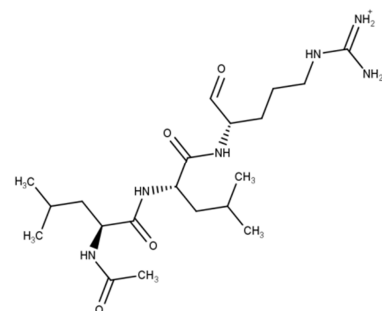




Leupeptin

Catalog No: 12136
Lot No: XXXXX
Cas No: 103476-89-7
Formula: C₂₀H₃₈N₆O₄ · 0.5 H₂SO₄
MW: 475.6
Supplied as: solid
Stability: store at -20°C, dry and protect from light



Background

Leupeptin, also known as N-acetyl-L-leucyl-L-leucyl-L-argininal, is a naturally occurring protease inhibitor that can inhibit cysteine, serine and threonine peptidases. It is often used during in vitro experiments when a specific enzymatic reaction is being studied. When cells are lysed for these studies, proteases, many of which are contained within lysosomes, are released. These proteases, if freely present in the lysate, would destroy any products from the reaction being studied, and make the experiment uninterpretable. For example, leupeptin could be used in a calpain extraction to keep calpain from being hydrolyzed by specific proteases. The suggested concentration is 1-10 µM (0.5-5 µg/ml).

Tests

Appearance:

Purity (HPLC):

Specifications

white amorphous powder

≥95 area-%

Usage

This product is offered by Biomol for research purposes only. Not for diagnostic purposes or human use. It may not be resold or used to manufacture commercial products without written approval of Biomol GmbH.