



Biomol PINK prestained Protein Ladder (10-175 kDa)

Catalog No: 10007
Lot No: XXXXX
Supplied as: 500 µl
Stability: store at 4°C for 3 months
 or at -20°C for 24 months

Background

The Biomol PINK prestained Protein Ladder contains 11 proteins that resolve into sharp, tight bands in the range of 10 - 175 kDa. The Biomol PINK prestained Protein Ladder allows you to monitor molecular weight separation during electrophoresis, estimate molecular weights of proteins of interest, and evaluate western transfer efficiency. The product is supplied in a loading buffer for direct loading on gels.

Formulation

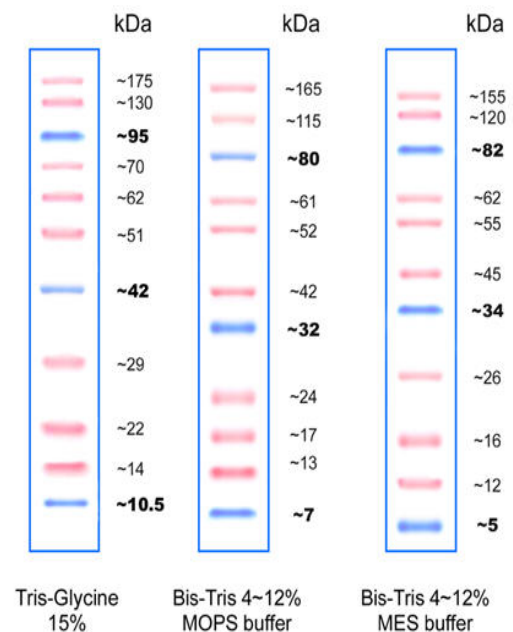
Approximately 0.2~0.4 mg/ml of each protein in the buffer (20 mM Tris-phosphate, pH 7.5 at 25°C), 2% SDS, 1 mM Dithiothreitol, 4.8 M Urea, and 12% (v/v) Glycerol).

Protocol for use in SDS-PAGE

- Thaw the ladder either at room temperature or at 37-40°C for a few minutes to dissolve precipitated solids. Do not boil.
- Mix thoroughly to ensure the solution is homogeneous.
- Load the following volumes of the ladder on SDS-PAGE:

Mini gel: 5 µl per well for SDS-PAGE, 2.5 µl for WB

Large gel: 10 µl per well for SDS-PAGE, 5 µl for WB



Usage

This product is offered by Biomol for research purposes only. Not for diagnostic purposes or human use. It may not be resold or used to manufacture commercial products without written approval of Biomol GmbH.