



## Biomol 1kb/100bp combined DNA Ladder, ready-to-use

**Catalog No:** 10005  
**Lot No:** XXXXX  
**Supplied as:** 500 µl  
**Stability:** store at 4°C for 12 months  
 or at -20°C for 24 months

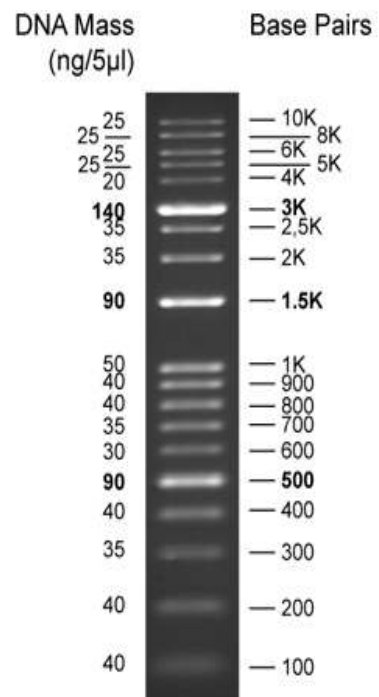
### Background

A unique combination of PCR products and a number of proprietary plasmids digested with appropriate restriction enzymes to yield 19 fragments, suitable for use as molecular weight standards for agarose gel electrophoresis. The DNA includes fragments ranging from 100 - 10,000 base pairs. The 500, 1,500 and 3,000 base pair bands have increased intensity to serve as reference points. The approximate mass of DNA in each band is provided (0.86 µg a load) for approximating the mass of DNA in comparably intense samples of similar size.

### Source

PCR products and double-stranded DNA digested with appropriate restriction enzymes, are phenol extracted and equilibrated to 10 mM Tris-HCl (pH 8.0) and 10 mM EDTA.

**Range:** 100 - 10,000 bp  
**Number of bands:** 19  
**Concentration:** 172 µg/ml  
**Recommended load:** 5 µl/well  
**Tracking dye:** Orange G  
 Bromophenol Blue  
 Xylene Cyanol FF



1.5 % TAE agarose gel

### Usage

This product is offered by Biomol for research purposes only. Not for diagnostic purposes or human use. It may not be resold or used to manufacture commercial products without written approval of Biomol GmbH.