



Anti-LUCIFERASE (RABBIT) Antibody - 100-401-137

Code: 100-401-137

Size: 2 mL

Product Description: Anti-LUCIFERASE (RABBIT) Antibody - 100-401-137

Concentration: 90 mg/mL by Refractometry

PhysicalState: Lyophilized

Label	Unconjugated
Host	Rabbit
Gene Name	LUXB_VIBFI, luxA
Species Reactivity	Photobacterium (Vibrio) fischerii
Buffer	0.02 M Potassium Phosphate, 0.15 M Sodium Chloride, pH 7.2
Reconstitution Volume	2.0 mL
Reconstitution Buffer	Restore with deionized water (or equivalent)
Stabilizer	None
Preservative	0.01% (w/v) Sodium Azide
Storage Condition	Store vial at 4° C prior to restoration. For extended storage aliquot contents and freeze at -20° C or below. Avoid cycles of freezing and thawing. Centrifuge product if not completely clear after standing at room temperature. This product is stable for several weeks at 4° C as an undiluted liquid. Dilute only prior to immediate use.
Synonyms	rabbit anti-Luciferase Antibody, Alkanal monooxygenase alpha chain, Bacterial luciferase alpha chain, luxA, Alkanal monooxygenase beta chain, Bacterial luciferase beta chain, luxB
Application Note	Luciferase Antibody is suitable for western blotting, immunohistochemistry, immunoprecipitation, and ELISA. Researchers should determine optimal titers for applications that are not stated below.
Background	Anti luciferase Antibody recognizes luciferase that is commonly used in biological research as a reporter to assess the transcriptional activity in cells that are transfected with a genetic construct containing the luciferase gene under the control of a promoter of interest. Luciferase can also be used to detect the level of cellular ATP in cell viability assays or for kinase activity assays. Additionally proluminescent molecules that are converted to luciferin upon activity of a particular enzyme can be used to detect enzyme activity in coupled or two-step luciferase assays. Such substrates have been used to detect caspase activity and cytochrome P450 activity, among others.
Purity And Specificity	This product was prepared from monospecific antiserum by a delipidation and defibrination. Assay by immunoelectrophoresis resulted in a single precipitin arc against anti-rabbit serum, purified and partially purified Luciferase [Photobacterium fischerii]. Cross reactivity against Luciferase from other tissues and species may occur but have not been specifically determined.
Assay Dilutions	User Optimized
ELISA	1:5,000 - 1:25,000
Western Blot	1:1,000 - 1:5,000
Immunohistochemistry	1:500 - 1:2,500
Other Assays	User Optimized
Expiration	Expiration date is one (1) year from date of opening.
Immunogen	Luciferase [Photobacterium fischerii]
Related Products	
200-341-215	Anti-GFP (MOUSE) Monoclonal Antibody DyLight™ 488 Conjugated - 200-341-215
600-100-215	Anti-GFP (GOAT) Antibody Rhodamine Conjugated Min X Hu Ms and Rt Serum Proteins - 600-100-215

600-102-215	Anti-GFP (GOAT) Antibody Fluorescein Conjugated Min X Hu Ms and Rt Serum Proteins - 600-102-215
600-401-379	Anti-RFP (RABBIT) Antibody Min X Hu Ms and Rt Serum Proteins - 600-401-379

Related Links

UniProtKB - P19907

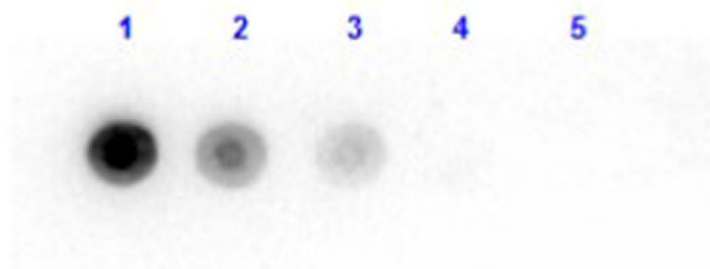
<http://www.uniprot.org/uniprot/P19907>

NCBI - P29238.1 <http://www.ncbi.nlm.nih.gov/protein/P29238.1>

GeneID - 3280269

Images

1 Dot Blot results of Rabbit anti-Luciferase Antibody. Dots are Luciferase (*Photobacterium fischerii*) at (1) 100ng, (2) 33.3ng, (3) 11.1ng, (4) 3.70ng, (5) 1.23ng. Blocking: MB-070 for 60 min at RT. Primary Antibody: Rabbit anti-Luciferase at 1ug/mL 1hr RT. Secondary Antibody: Goat Anti-Rabbit IgG HRP 611-103-122 at 1:40,000 for 30min RT. Imaged with BioRad ChemiDoc, Chemi filter 5sec exposure.



Disclaimer

This product is for research use only and is not intended for therapeutic or diagnostic applications. Please contact a technical service representative for more information. All products of animal origin manufactured by Rockland Immunochemicals are derived from starting materials of North American origin. Collection was performed in United States Department of Agriculture (USDA) inspected facilities and all materials have been inspected and certified to be free of disease and suitable for exportation. All properties listed are typical characteristics and are not specifications. All suggestions and data are offered in good faith but without guarantee as conditions and methods of use of our products are beyond our control. All claims must be made within 30 days following the date of delivery. The prospective user must determine the suitability of our materials before adopting them on a commercial scale. Suggested uses of our products are not recommendations to use our products in violation of any patent or as a license under any patent of Rockland Immunochemicals, Inc. If you require a commercial license to use this material and do not have one, then return this material, unopened to: Rockland Inc., P.O. BOX 5199, Limerick, Pennsylvania, USA.