

## Mouse Monoclonal Antibody to

### Raptor

### clone 10E10

**Order No.:** 0255-100/Raptor-10E10

**Size (µg)** 100

**Lot No.:** 0255S



01/220307F

Isotype	Species Reactivity	Applications	Mol. Weight	Ref. Cell Line	Epitope	Immunogen
IgG1	human, mouse, rat, dog	WB	160 kDa	HeLa	peptide derived from Raptor sequence	peptide conjugated to hemocyanin

#### Background and Specificity:

The mTOR pathway (mammalian target of rapamycin) coordinates nutrient signals with growth factor dependent signaling. Recent data revealed that mTOR is organized in two independent protein complexes: The complex containing mTOR, GbL and RAPTOR is target of rapamycin while the complex containing mTOR, GbL and RICTOR is insensitive to rapamycin. The mTOR / RICTOR complex phosphorylates PKB $\alpha$ /akt1 at Serine 473

#### Related Products

##### mab to Rictor

#0250-100/Rictor-1G11

##### mab to PKB (phospho-Ser 473)

#0108-100/PKB-11E6

##### mab to PKB (dephospho-Ser 473)

#0049-100/PKB-11A11

##### mab to PKB (C-terminus)

#0119-100/PKB-5C10

##### mab to PKB $\alpha$ (Akt-1)

#0144-100/PKB $\alpha$ -5G12

##### mab to PKB $\beta$ (Akt-2)

#0179-100/PKB $\beta$ -8B7

<b>Purification:</b>	The antibody was purified from serum-free cell culture supernatant by subsequent ultrafiltration and size exclusion chromatography.
<b>Formulation:</b>	lyophilized from 1 ml PBS / 0.09 % Na-azide / PEG and Sucrose
<b>Reconstitution:</b>	Reconstitute with 1 ml H <sub>2</sub> O (15 min, RT).
<b>Stability:</b>	For long term storage, freeze lyophilizate upon arrival (-20°C): Aliquote and freeze in liquid nitrogen; reconstituted antibody can be stored frozen at -80°C up to 1 year. Thaw aliquots at 37°C. Thawed aliquots may be stored at 4°C up to 3 months.

**Avoid repeated freeze / thaw cycles.**

**Positive Control:** #0821: Cell lysate from untreated HeLa cells.

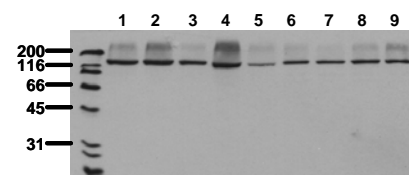
**Immunoblotting:** 0.5 µg/ml for HRPO/ECL detection  
**Recommended blocking buffer:** Casein/Tween 20 based blocking and blot incubation buffer, e.g. nanoTools product #3031-500/CPPT or #3031-3000/CPPT.

**Immunoprecipitation:** ND

**Immunocytochemistry:** ND

**ELISA:** ND

**All products are supplied for research and investigational use only. Not for use in humans or laboratory animals.**



#### Detection of endogenous Raptor

Whole cell lysates of serum starved tumor cells (20.000 cells per lane) were applied to SDS-PAGE and transferred to PVDF membranes. Immunoblots were probed with mab10E10 (0.5 µg/ ml) for 1h at RT and developed by ECL (exp. time: 30 sec).  
lane 1: HeLa; lane 2: HepG2; lane 3: HEK293;  
lane 4: SH-SY5Y; lane 5: MDCK; lane 6: PC12;  
lane 7: CMT- 93; lane 8: Neuro 2A; lane 9: 3T3