

## Mouse Monoclonal Antibody to

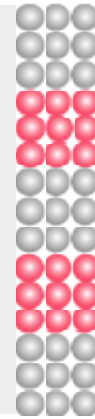
# Beclin

# clone 12B4

**Order No.:** 0240-100/Beclin-12B4

**Size (µg)** 100

**Lot No.:** 0240S



02/140207F

Isotype:	Species Reactivity	Applications	Mol. Weight	Ref.Cell Line	Epitope:	Immunogen:
IgG1	human, mouse, rat, dog	WB	52 kDa	Neuro 2A	synthetic peptide derived from Beclin sequence	synthetic peptide conjugated to hemocyanin

### Background and Specificity:

Autophagy is an alternative process of proteasomal degradation for some long-lived proteins or organelles. This process is important in normal cellular growth control and may be defective in tumor cells. Genetic studies revealed that Beclin-1 has structural similarity to the yeast autophagy gene, atg6. Beclin-1 is part of a complex with class III PI3 kinase, Vsp34, that is responsible for autophagosome formation.

Mab Beclin-12B4 recognizes Beclin at 52 kDa in Western-blot application.

### Related Products

**mab to LC3**  
 #0231-100/LC-3-5F10  
 #0260-100/LC3-2G6

<b>Purification:</b>	The antibody was purified from serum-free cell culture supernatant by subsequent ultrafiltration and size exclusion chromatography.
<b>Formulation:</b>	liquid in PBS/0.09% Na-Azide/PEG and Sucrose/50% Glycerol (1 ml, c = 100 µg/ml)
<b>Reconstitution:</b>	
<b>Stability:</b>	Aliquote and store at -20°C up to 1 year

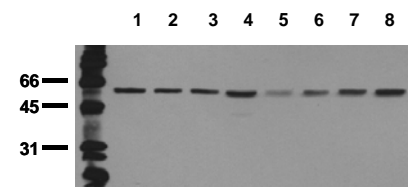
**Positive Control:** #0911: Cell lysate from untreated Neuro 2A

**Immunoblotting:** 0.5 µg/ml for HRPO/ECL detection  
**Recommended blocking buffer:** Casein/Tween 20 based blocking and blot incubation buffer, e.g. nanoTools product #3031-500/CPPT or #3031-3000/CPPT.

**Immunoprecipitation** ND

**Immunocytochemistry** ND

**ELISA:** ND



### Detection of endogenous Beclin

Whole cell lysates of untreated tumor cells were applied to SDS-PAGE and transferred to a PVDF membrane. The immunoblot was probed with mab Beclin-12B4 (0.5 µg/ml) for 1h at RT and developed by ECL (exp. time: 30 sec).

lane 1: HeLa; lane 2: HepG2; lane 3: HEK 293; lane 4: SH-SY5Y; lane 5: MDCK; lane 6: PC12; lane 7: CMT; lane 8: Neuro2A

**All products are supplied for research and investigational use only. Not for use in humans or laboratory animals.**