

Mouse Monoclonal Antibody to

erbB4 (aa 1230-1250)

clone 6C5

Order No.: 0228-100/erbB4-6C5

Size (µg) 100

Lot No.: 0228S



01/230207F

Isotype	Species Reactivity	Applications	Mol. Weight	Ref.Cell Line	Epitope	Immunogen
IgG1	human	WB	180 kDa	T47D	aa 1230-1250	peptide conjugated to hemocyanin

Background and Specificity:

erbB4/Her4 is a member of the receptor tyrosine kinase subfamily that includes EGFR, erbB2/Her2, and erbB3/Her3. erbB4 is a receptor for Neuregulin 1 (NRG1) and regulates cell proliferation and differentiation.

Mab erbB4-6C5 specifically recognizes erbB4 at 180 kDa in Western-blot applications.

Purification: The antibody was purified from serum-free cell culture supernatant by subsequent ultrafiltration and size exclusion chromatography.

Formulation: lyophilized from 1 ml PBS / 0.09 % Na-azide / PEG and Sucrose.

Reconstitution: Reconstitute with 1 ml H₂O (15 min, RT).

Stability: For long-term storage, freeze lyophilizate upon arrival (-20°C). Upon reconstitution, aliquote and freeze in liquid nitrogen; reconstituted antibody can be stored frozen at -80°C up to 1 year. Thaw aliquots at 37°C. Thawed aliquots may be stored at 4°C up to 3 months.

Avoid repeated freeze / thaw cycles.

Related Products

- mab to erbB4 (pospho-Tyr 1242)**
#0229-100/erbB4-4C6
- mab to erbB2 (aa 1240-1260)**
#0192-100/erBb2-19D2
- mab to erbB2 (intracellular domain; aa 860-880)**
#0222-100/erbB2-24B5
- mab to erbB2 (phospho-Ser 1113)**
#0139-100/erbB2-9E10
- mab to erbB2 (phospho-Thr 686)**
#0182-100/erbB2-7F8
- mab to erbB2 (phospho-Tyr 1112)**
#0216-100/erbB2-19G5
- mab to erbB2 (phospho-Tyr 1248; crossreacts with EGFR)**
#0221-100/erbB2-6G7
- mab to erbB3 (aa1250-1270)**
#0237-100/erbB3-5A12
- mab to erbB3 (C-terminus)**
#0141-100/erbB3-11A4

For monoclonal antibodies against EGFR and downstream targets, please refer to our website at www.nanotools.de

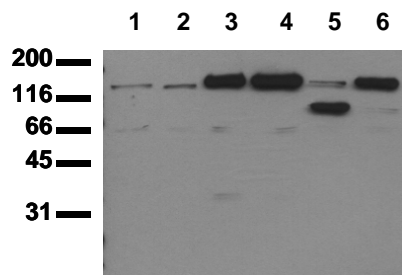
Positive Control: #1011: Cell lysate from untreated T47D cells

Immunoblotting: 0.5 µg/ml for HRPO/ECL detection
Recommended blocking buffer: Casein/Tween 20 based blocking and blot incubation buffer, e.g. nanoTools product #3031-500/CPPT or #3031-3000/CPPT.

Immunoprecipitation: ND

Immunocytochemistry: ND

ELISA: ND



Detection of endogenous erbB4

Whole cell extracts of serum starved tumor cells (20.000 cells per lane) were applied to SDS-PAGE and transferred to a PVDF membrane. The immunoblot was probed with mab erbB4-6C5 (0.5 µg/ ml) for 1h at 15-22°C and developed by ECL (exp. time: 30 sec).
 lane 1: MDA-MB 231; lane 2: MDA-MB 468; lane 3: MCF-7; lane 4: T47D; lane 5: SW480; lane 6: SW620

All products are supplied for research and investigational use only. Not for use in humans or laboratory animals.