

## Mouse Monoclonal Antibody to

# MKK5 (N-terminus)

## clone 14B5

Order No.: **0224-100/MKK5-14B5**

Size (µg) 100

Lot No.: 0224S



06/290108F

Isotype	Species Reactivity	Applications	Mol. Weight	Ref.Cell Line	Epitope	Immunogen
IgG1	human, mouse, rat, dog	WB	45 kDa	A431	N-terminus	peptide conjugated to hemocyanin

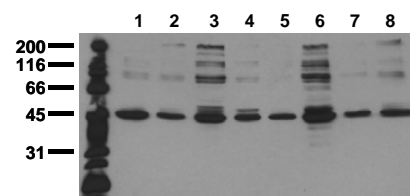
### Background and Specificity:

Mitogen-activated protein kinase kinase 5 (MKK5) belongs to the serine/threonine protein kinase family and the MAPK subfamily (MAP2K, MKK or MEKs). MKK5 specifically phosphorylates erk5/MAPK7 within the kinase activation loop pThr-E-pTyr motif. After activation erk5 phosphorylates MKK5 on multiple phosphoserine residues. The MKK5/erk5 pathway may play an important role in prostate and breast cancer.

### Related Products

- mab to MEK1 (pS218/222)**
- mab to MEK2 (pS222/226)**  
#0174-100/MEK1/2-7E10
- mab to MEK1 (N-terminus)**  
#0186-100/MEK1-10B1
- mab to MEK1/2**  
#0150-100/MEK1/2-9G3
- mab to MEK2 (N-terminus)**  
#0148-100/MEK2-8E8
- mab to MKK3 (N-terminus)**  
#0166-100/MKK3-5F7
- mab to MKK7 (N-terminus)**  
#0189-100/MKK7-10F7
- mab to MAPK 1/2 (pT-E-pY)**  
#0012-100/MAPK-12D4
- mab to MAPK 2 (C-terminus)**  
#0011-100/MAPK-6G11
- mab to MAPK 2 (N-terminus)**  
#0178-100/MAPK-6H3
- mab to MAPK 2 (internal sequence)**  
#0239-100/MAPK2-12A4
- mab to MAPK 7/erk 5**  
#0223-100/MAPK7/erk5-12F2
- mab to Fos (pS374)**  
#0118-100/Fos-34E4
- mab to Fos (N-terminus)**  
#0122-100/Fos-8B5
- mab to C-Raf (pS621)**  
#0102-100/C-Raf-6B4
- mab to C-Raf**  
#0120-100/C-Raf-PBB-1

<b>Purification:</b>	The antibody was purified from serum-free cell culture supernatant by subsequent ultrafiltration and size exclusion chromatography.
<b>Formulation:</b>	lyophilized from 1 ml PBS / 0.09 % Na-azide / PEG and Sucrose
<b>Reconstitution:</b>	Reconstitute with 1 ml H <sub>2</sub> O (15 min, RT).
<b>Stability:</b>	Upon reconstitution, aliquote and freeze in liquid nitrogen; reconstituted antibody can be stored frozen at -80°C up to 1 year. Thaw aliquots at 37°C. Thawed aliquots may be stored at 4°C up to 3 months. Avoid repeated freeze / thaw cycles.
<b>Positive Control:</b>	#0831: Cell lysate from untreated A431 cells
<b>Immunoblotting:</b>	0.5 µg/ml for HRPO/ECL detection <b>Recommended blocking buffer:</b> Casein/Tween 20 based blocking and blot incubation buffer, e.g. nanoTools product #3031-500/CPPT or #3031-3000/CPPT.
<b>Immunoprecipitation:</b>	ND
<b>Immunocytochemistry:</b>	ND
<b>ELISA:</b>	ND



### Detection of endogenous MKK5

Whole cell lysates of serum starved tumor cells (20.000 cells per lane) were applied to SDS-PAGE and transferred to a PVDF membrane. The immunoblot was probed with mab MKK5-14B5 (0.5 µg/ml) for 1h at RT and developed by ECL (exp. time: 30 sec).

lane 1: A431; lane 2: A549; lane 3: SKOV3; lane 4: OVCAR5; lane 5: HaCaT; lane 6: PC3; lane 7: HeLa; lane 8: HepG2

**All products are supplied for research and investigational use only. Not for use in humans or laboratory animals.**