

Mouse Monoclonal Antibody to

MAPK7/erk5

clone 12F2

Order No.: **0223-100/MAPK7/erk5-12F2**

Size (µg) 100

Lot No.: 0223S



02/150307F

Isotype	Species Reactivity	Applications	Mol. Weight	Ref.Cell Line	Epitope	Immunogen
IgG1	human, mouse, rat, dog	WB	92 kDa	SKOV-3	N - Terminus	peptide conjugated to hemocyanin

Background and Specificity:

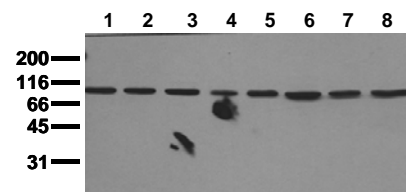
Erk5 (also known as MAPK7 or big mitogen activated kinase 1, BMK1) belongs to the Ser/Thr protein kinase family. It contains a T E Y motif in the activation loop similar to Erk1/2. Extracellular signals, including receptor tyrosine kinases and G-protein-coupled receptors as well as osmotic and oxidative stress lead to Erk5 activation by MEK5. The Erk5 pathway plays an important role in cellular proliferation, differentiation and survival.

Mab MAPK7/erk5-12F2 recognizes MAP kinase 7 (erk5) at 92 kDa in Western-blot applications.

Related Products

- mab to MEK1 (pS218/222)**
- mab to MEK2 (pS222/226)**
- #0174-100/MEK1/2-7E10
- mab to MEK1 (N-terminus)**
- #0186-100/MEK1.10B1
- mab to MEK1/2**
- #0150-100/MEK1/2-9G3
- mab to MEK2 (N-terminus)**
- #0148-100/MEK2-8E8
- mab to MKK3 (N-terminus)**
- #0166-100/MKK3-5F7
- mab to MKK5 (N-terminus)**
- #0224-100/MKK5-14B5
- mab to MKK7 (N-terminus)**
- #0189-100/MKK7-10F7
- mab to MAPK 1/2 (pT-E-pY)**
- #0012-100/MAPK-12D4
- mab to MAPK 2 (C-terminus)**
- #0011-100/MAPK-6G11
- mab to MAPK 2 (N-terminus)**
- #0178-100/MAPK2-6H3
- mab to MAPK 2 (internal sequence)**
- #0239-100/MAPK2-12A4
- mab to Fos (pS374)**
- #0118-100/Fos-34E4
- mab to Fos (N-terminus)**
- #0122-100/Fos-8B5
- mab to C-Raf (pS621)**
- #0102-100/C-Raf-6B4
- mab to C-Raf**
- #0120-100/C-Raf-PBB-1

Purification:	The antibody was purified from serum-free cell culture supernatant by subsequent ultrafiltration and size exclusion chromatography.
Formulation:	lyophilized from 1 ml PBS / 0.09 % Na-azide / PEG and Sucrose.
Reconstitution:	Reconstitute with 1 ml H ₂ O (15 min, RT).
Stability:	For long-term storage, freeze lyophilizate upon arrival (-20°C). Upon reconstitution, aliquote and freeze in liquid nitrogen; reconstituted antibody can be stored frozen at -80°C up to 1 year. Thaw aliquots at 37°C. Thawed aliquots may be stored at 4°C up to 3 months.
	Avoid repeated freeze / thaw cycles.
Positive Control:	#0991: Cell lysate from untreated SKOV-3 cells
Immunoblotting:	0.5 µg/ml for HRPO/ECL detection Recommended blocking buffer: Casein/Tween 20 based blocking and blot incubation buffer, e.g. nanoTools product #3031-500/CPPT or #3031-3000/CPPT.
Immunoprecipitation:	ND
Immunocytochemistry:	ND
ELISA:	ND



Detection of endogenous MAPK7 / erk5

Whole cell lysates of serum starved tumor cells (20.000 cells per lane) were applied to SDS-PAGE and transferred to a PVDF membrane. Immunoblots were probed with mab MAPK7-12F2 (0.5 µg/ ml) for 1h at RT and developed by ECL (exp. time: 30 sec).

lane 1: A431; lane 2: A549; lane 3: SKOV3; lane 4: OVCAR5; lane 5: HaCaT; lane 6: PC3; lane 7: HeLa; lane 8: HepG2

All products are supplied for research and investigational use only. Not for use in humans or laboratory animals.