



Mouse Monoclonal Antibody to

IGF1 Receptor (C-terminus)

clone 7G11

Order No.: 0198-100/IGF1R-7G11

Size (µg) 100

Lot No.: 0198S



02/160307F

Isotype	Species Reactivity	Applications	Mol. Weight	Ref. Cell Line	Epitope	Immunogen
IgG1	human	WB	97 kDa	A431	C-terminus	peptide conjugated to hemocyanin

Background and Specificity:

The IGF1 receptor (IGF1R) is a heterodimeric receptor tyrosine kinase with an extracellular alpha-chain, a transmembrane domain and an intracellular beta-chain. The IGF1 receptor is activated upon binding of the peptide hormones IGF1 and 2, leading to autophosphorylation of tyrosine residue 1131, 1135, and 1136 in the activation loop of the beta-chain. Additional autophosphorylation sites such as tyrosine residue 950 and 1316 regulate the assembly of signal transduction complexes.

Mab IGF1R-7G11 specifically recognizes the C-terminus of IGF1 receptor.

Related Products

mab to IGF1R (phospho-Tyr 1316)

#0128-100/IGF1R-2B9

mab to InsR (phospho-Tyr 1150/1151)

#0143-100/InsR-10C3

mab to InsR (phospho-Tyr 1322)

#0127-100/InsR-21G12

mab to InsR (activation loop, phosphorylation independent)

#0142-100/InsR-9H4

mab to InsR (C-terminus)

#0160-100/InsR-11B6

Purification:	The antibody was purified from serum-free cell culture supernatant by subsequent thiophilic adsorption and size exclusion chromatography.
Formulation:	lyophilized from 1 ml 2 x PBS / 0.09 % Na-azide / PEG and Sucrose.
Reconstitution:	Reconstitute with 1 ml H ₂ O (15 min, RT).
Stability:	For long-term storage, freeze lyophilizate upon arrival (-20°C). Upon reconstitution, aliquote and freeze in liquid nitrogen; reconstituted antibody can be stored frozen at -80°C up to 1 year. Thaw aliquots at 37°C. Thawed aliquots may be stored at 4°C up to 3 months.

Avoid repeated freeze / thaw cycles.

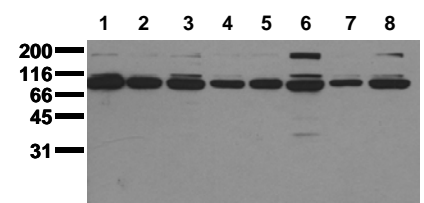
Positive Control: #0831: Cell lysate from untreated A431 cells

Immunoblotting: 0.5 µg/ml for HRPO/ECL detection
Recommended blocking buffer: Casein/Tween 20 based blocking and blot incubation buffer, e.g. nanoTools product #3031-500/CPPT or #3031-3000/CPPT.

Immunoprecipitation: ND

Immunocytochemistry: ND

ELISA: ND



Detection of endogenous IGF1R

Whole cell extracts of serum starved tumor cells (20.000 cells per lane) were applied to SDS-PAGE and transferred to PVDF membranes. Immunoblots were probed with mab IGF1R-7G11 (0.5 µg/ ml) for 1h at RT and developed by ECL (exp. time: 30 sec).
lane 1: A431; lane 2: A549; lane 3: SKOV3;
lane 4: OVCAR5; lane 5: HaCaT; lane 6: PC3;
lane 7: HeLa; lane 8: HepG2

All products are supplied for research and investigational use only. Not for use in humans or laboratory animals.