

## Mouse Monoclonal Antibody to

# SAPK1 $\alpha$ /jnk2 (N-Terminus)

## clone 12C5

Order No.: **0190-100/SAPK1a/jnk2-12C5**

Size ( $\mu$ g) 100

Lot No.: 0190S



04/080507F

Isotype	Species Reactivity	Applications	Mol. Weight	Ref.Cell Line	Epitope	Immunogen
IgG1	human, mouse, rat, dog	WB, ELISA, IHC	54 kDa	A431	N-terminus	peptide conjugated to hemocyanin

### Background and Specificity:

Stress-activated Protein Kinases (SAPKs) are strongly activated in response to adverse stimuli such as heat and osmotic shock, UV light and other DNA-damaging reagents, and inhibitors of protein synthesis. They are also activated strongly in response to agonists that are released or produced under conditions of stress, such as proinflammatory cytokines.

The SAPK1/jnk family consists of 3 isoforms: SAPK1 $\alpha$ /jnk2; SAPK1 $\beta$ /jnk3; SAPK1 $\gamma$ /jnk1.

**Mab SAPK1a-12C5** specifically interacts with the N-terminus of SAPK1 $\alpha$ /jnk2 kinases.

### Related Products

#### mab to SAPK1 $\beta$ /jnk3 (N-terminus)

#0220-100/SAPK1b/jnk3-5D10

#### mab to SAPK1 $\gamma$ /jnk1 (N-terminus)

#0200-100/SAPK1g/jnk1-5D10

#### mab to SAPK1/2 (T - G/P - pY)

#0041-100/SAPK1/2-9H8

#### mab to SAPK2 $\alpha$ (N-terminus)

#0034-100/SAPK2a-13D5 (crossreaction with Mxi2)

#0035-100/SAPK2a-20B11 (no crossreaction with Mxi2)

#### mab to SAPK2 $\delta$ (N-terminus)

#0053-100/SAPK2d-5H7

#### mab to MAPK 1/2 (pT-E-pY)

#0012-100/MAPK-12D4

#### mab to MAPK 2 (C-terminus)

#0011-100/MAPK2-6G11

#### mab to MAPK 2 (N-terminus)

#0178-100/MAPK2-6H3

#### mab to MAPK 2 (internal sequence)

#0239-100/MAPK2-12A4

#### mab to MAPK7/erk5

#0223-100/MAPK7/erk5-12F2

#### mab to Mxi 2 (N-terminus)

0046-100/Mxi-2F2

<b>Purification:</b>	The antibody was purified from serum-free cell culture supernatant by subsequent thiophilic adsorption and size exclusion chromatography.
<b>Formulation:</b>	lyophilized from 1 ml PBS / 0.09 % Na-azide / PEG and Sucrose.
<b>Reconstitution:</b>	Reconstitute with 1 ml H <sub>2</sub> O (15 min, RT).
<b>Stability:</b>	For long-term storage, freeze lyophilizate upon arrival (-20°C). Upon reconstitution, aliquote and freeze in liquid nitrogen; reconstituted antibody can be stored frozen at -80°C up to 1 year. Thaw aliquots at 37°C. Thawed aliquots may be stored at 4°C up to 3 months.

**Avoid repeated freeze / thaw cycles.**

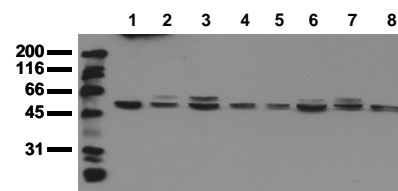
**Positive Control:** #0831: Cell lysate from untreated A431 cells

**Immunoblotting:** 0.5  $\mu$ g/ml for HRPO/ECL detection  
**Recommended blocking buffer:** Casein/Tween 20 based blocking and blot incubation buffer, e.g. nanoTools product #3031-500/CPPT or #3031-3000/CPPT.

**Immunoprecipitation:** ND

**Immunocytochemistry:** ND

**ELISA:** use at 0.05 g/ml



#### Detection of endogenous SAPK1alpha

Whole cell lysates of serum starved tumor cells (20.000 cells per lane) were applied to SDS-PAGE and transferred to a PVDF membrane. The immunoblot was probed with mab SAPK1a/jnk2-12C5 (0.5  $\mu$ g/ml) for 1h at RT and developed by ECL (exp. time: 30 sec).

lane 1: A431; lane 2: A549; lane 3: SKOV3; lane 4: OVCAR5; lane 5: HaCaT; lane 6: PC3; lane 7: HeLa; lane 8: HepG2

**All products are supplied for research and investigational use only. Not for use in humans or laboratory animals.**