

Mouse Monoclonal Antibody to

MKK7 (N-terminus)

clone 10F7

Order No.: 0189-100/MKK7-10F7

Size (µg) 100

Lot No.: 0189S



04/080507F

Isotype	Species Reactivity	Applications	Mol. Weight	Ref. Cell Line	Epitope	Immunogen
IgG1	human, mouse, rat, dog	WB, ELISA, IHC, ICC	45 kDa	SW480	N-Terminus	peptide conjugated to hemocyanin

Background and Specificity:

The stress response of mammalian cells results in activation of kinases of the SAPK1 and SAPK2 families. The SAP kinases are specifically activated by dual phosphorylation of a conserved **T-X-Y** motif by MAP kinase kinases (MKK). The 3 isoforms of the SAPK1 family (SAPK1 α /jnk2; SAPK1 β /jnk3; SAPK1 γ /jnk1) are synergistically activated by phosphorylation of the threonine residue by MKK7 and the tyrosine residue by MKK4.

Mab MKK7-10F7 specifically recognizes the N-terminus of MKK7. The antibody is suitable for Western Blot and ELISA applications.

Related Products

- mab to MAPK 1/2 (pT-E-pY)**
#0012-100/MAPK-12D4
- mab to MAPK 2 (C-terminus)**
#0011-100/MAPK2-6G11
- mab to MAPK 2 (N-terminus)**
#0178-100/MAPK2-6H3
- mab to MAPK 2 (internal sequence)**
#0239-100/MAPK2-12A4
- mab to MEK1 (N-Terminus)**
#0186-100/MEK1-10B1
- mab to MEK1/2**
#0150-100/MEK1/2-9G3
- mab to MEK1 (pS218/222)**
- mab to MEK2 (pS222/226)**
#0174-100/MEK1/2-7E10
- mab to MEK2 (N-terminus)**
#0148-100/MEK2-8E8
- mab to MKK3 (N-terminus)**
#0166-100/MKK3-5F7
- mab to MKK5 (N-terminus)**
#0224-100/MKK5-14B5
- mab to Fos (pS374)**
#0118-100/Fos-34E4
- mab to Fos (N-terminus)**
#0122-100/Fos-8B5
- mab to C-Raf (pS621)**
#0102-100/C-Raf-6B4
- mab to C-Raf**
#0120-100/C-Raf-PBB-1

Purification:	The antibody was purified from serum-free cell culture supernatant by subsequent thiophilic adsorption and size exclusion chromatography
Formulation:	lyophilized from 1 ml 2 x PBS / 0.09 % Na-azide / PEG and Sucrose.
Reconstitution:	Reconstitute with 1 ml H ₂ O (15 min, RT).
Stability:	For long-term storage, freeze lyophilizate upon arrival (-20°C). Upon reconstitution, aliquote and freeze in liquid nitrogen; reconstituted antibody can be stored frozen at -80°C up to 1 year. Thaw aliquots at 37°C. Thawed aliquots may be stored at 4°C up to 3 months.

Avoid repeated freeze / thaw cycles.

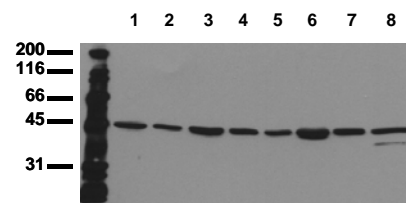
Positive Control: #0801: Cell lysate from untreated SW480 cells

Immunoblotting: 0.5 µg/ml for HRPO/ECL detection
Recommended blocking buffer: Casein/Tween 20 based blocking and blot incubation buffer, e.g. nanoTools product #3031-500/CPPT or #3031-3000/CPPT.

Immunoprecipitation: ND

Immunocytochemistry: ND

ELISA: use at 0.1 µg/ml



Detection of endogenous MKK7

Whole cell lysates of serum starved tumor cells (20.000 cells per lane) were applied to SDS-PAGE and transferred to a PVDF membrane. The immunoblot was probed with mab MKK7-10F7 (0.5 µg/ml) for 1h at RT and developed by ECL (exp. time: 30 sec).

lane 1: A431; lane 2: A549; lane 3: SKOV3; lane 4: OVCAR5; lane 5: HaCaT; lane 6: PC3; lane 7: HeLa; lane 8: HepG2

All products are supplied for research and investigational use only. Not for use in humans or laboratory animals.