

Mouse Monoclonal Antibody to

MEK1 (N-Terminus)

clone 10B1

Order No.: **0186-100/MEK1-10B1**

Size (µg) 100

Lot No.: 0186S



04/150307F

Isotype	Species Reactivity	Applications	Mol. Weight	Ref.Cell Line	Epitope	Immunogen
IgG1	human, mouse, rat, dog	WB, ELISA	45 kDa	SW480	N-Terminus	peptide conjugated to hemocyanin

Background and Specificity:

MEK (MAP Kinase Kinase) phosphorylates the MAP kinase on both threonine and tyrosine residues of the activation loop motif **TEY**. MEK1 and MEK2 are activated by phosphorylation of two serine residues (Ser 218/222 in MEK1 and Ser 222/226 in MEK2). These phosphorylation sites are substrates of the Raf family of kinases.

Mab MEK1-10B1 specifically recognizes the N-terminus of MEK1 at 45 kDa. The antibody is suitable for Western Blot and ELISA applications.

Related Products

- mab to MEK1 (pS218/222)**
- mab to MEK2 (pS222/226)**
#0174-100/MEK1/2-7E10
- mab to MEK1/2**
#0150-100/MEK1/2-9G3
- mab to MEK2 (N-terminus)**
#0148-100/MEK2-8E8
- mab to MKK3 (N-terminus)**
#0166-100/MKK3-5F7
- mab to MKK5 (N-terminus)**
#0224-100/MKK5-14B5
- mab to MKK7 (N-terminus)**
#0189-100/MKK7-10F7
- mab to MAPK 1/2 (pT-E-pY)**
#0012-100/MAPK-12D4
- mab to MAPK 2 (C-terminus)**
#0011-100/MAPK-6G11
- mab to MAPK 2 (N-terminus)**
#0178-100/MAPK-6H3
- mab to MAPK 2 (internal sequence)**
#0239-100/MAPK2-12A4
- mab to MAPK 7/erk 5**
#0223-100/MAPK7/erk5-12F2
- mab to Fos (pS374)**
#0118-100/Fos-34E4
- mab to Fos (N-terminus)**
#0122-100/Fos-8B5
- mab to C-Raf (pS621)**
#0102-100/C-Raf-6B4
- mab to C-Raf**
#0120-100/C-Raf-PBB-1

Purification: The antibody was purified from serum-free cell culture supernatant by subsequent thiophilic adsorption and size exclusion chromatography.

Formulation: liquid; 0.1mg/ml in in PBS/0.09% Na-Azide/PEG and Sucrose/50% Glycerol

Reconstitution:

Stability: Aliquote and store at -80°C up to 1 year. Thaw aliquots at 37°C. Thawed aliquots may be stored at 4°C up to 3 months.

Avoid repeated freeze / thaw cycle.

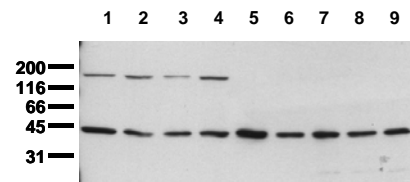
Positive Control: #0801: Cell lysate from untreated SW480 cells

Immunoblotting: 1µg/ml for HRPO/ECL detection
Recommended blocking buffer: Casein/Tween 20 based blocking and blot incubation buffer, e.g. nanoTools product #3031-500/CPPT or #3031-3000/CPPT.

Immunoprecipitation: ND

Immunocytochemistry: ND

ELISA: use at 0.05 µg/ml



Detection of endogenous MEK1

Whole cell lysates of serum starved tumor cells (20000 cells per lane) were applied to SDS-PAGE and transferred to PVDF membranes. Immunoblots were probed with mab 10B1 (0.5 µg/ml) for 1h at RT and developed by ECL (exp. time: 30 sec).

lane 1: HeLa; lane 2: HepG2; lane 3: HEK293; lane 4: SH-SY5Y; lane 5: MDCK; lane 6: PC12; lane 7: CMT 93; lane 8: Neuro 2A; lane 9: 3T3

All products are supplied for research and investigational use only. Not for use in humans or laboratory animals.