

Mouse Monoclonal Antibody to

PKB β /Akt2

clone 8B7

Order No.: 0179-100/PKBb-8B7

Size (μ g) 100

Lot No.: 0179S



03/080507F

Isotype	Species Reactivity	Applications	Mol. Weight	Ref. Cell Line	Epitope	Immunogen
IgG2a	human	WB, ELISA, IHC	60 kDa	HepG2	aa 107-123	peptide conjugated to hemocyanin

Background and Specificity:

The PKB (RAC/akt) protein kinases are a family of second messenger-regulated serine/threonine kinases. Three mammalian isoforms (alpha, beta, gamma) have been identified so far; the alpha-isoform being the cellular homologue of the v-akt oncogene. Stimulation of cells with growth factors leads to activation of PKB by a phosphoinositide-3-kinase dependent signal transduction pathway.

Mab PKBb-8B7 specifically recognizes the beta isoform of PKB (PKB β /Akt2).

Related Products

mab to PKB (phospho-Ser 473)
#0108-100/PKB-11E6

mab to PKB (dephospho-Ser 473)
#0049-100/PKB-11A11

mab to PKB (C-terminus)
#0119-100/PKB-5C10

mab to PKB α (Akt-1)
#0144-100/PKBa-5G12

mab to PKB β (Akt-2)
#0179-100/PKBb-8B7

mab to Raptor
#0255-100/RAPTOR-10E10

mab to Rictor
#0250-100/Rictor-1G11

Purification:	The antibody was purified from serum-free cell culture supernatant by subsequent thiophilic adsorption and size exclusion chromatography.
Formulation:	lyophilized from 1 ml 2 x PBS / 0.09 % Na-azide / PEG and Sucrose.
Reconstitution:	Reconstitute with 1 ml H ₂ O (15 min, RT).
Stability:	For long term storage, freeze lyophilizate upon arrival (-20°C): Aliquote and freeze in liquid nitrogen; reconstituted antibody can be stored frozen at -80°C up to 1 year. Thaw aliquots at 37°C. Thawed aliquots may be stored at 4°C up to 3 months.

Avoid repeated freeze / thaw cycles.

Positive Control: #0811: Cell lysate from untreated HepG2 cells.

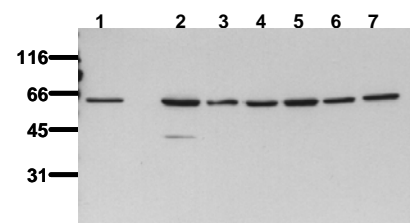
Immunoblotting: 1 μ g/ml for HRPO/ECL detection
Recommended blocking buffer: Casein/Tween 20 based blocking and blot incubation buffer, e.g. nanoTools product #3031-500/CPPT or #3031-3000/CPPT.

Immunoprecipitation: ND

Immunocytochemistry: ND

ELISA: use at 0.1 μ g/ml

All products are supplied for research and investigational use only. Not for use in humans or laboratory animals.



Detection of endogenous akt2

Whole cell lysates of serum starved tumor cells (20.000 cells per lane) were applied to SDS-PAGE and transferred to PVDF membranes. Immunoblots were probed with mab PKB-8B7 (0.5 μ g/ml) for 1h at RT and developed by ECL (exp. time: 30 sec).
lane 1: A431; lane 2: SW480; lane 3: SW620; lane 4: HT29; lane 5: MCF7; lane 6: MDA-MB-231; lane 7: T47D