

## Mouse Monoclonal Antibody to

# MAPK2/erk2 (N-terminus)

## clone 6H3

Order No.: 0178-100/MAPK2-6H3

Size (µg) 100

Lot No.: 0178S



03/150307F

Isotype	Species Reactivity	Applications	Mol. Weight	Ref.Cell Line	Epitope	Immunogen
IgG1	human, mouse, rat, dog	WB, ELISA	42 kDa	HepG2	N-terminus	peptide conjugated to hemocyanin

### Background and Specificity:

Extracellular signal/mitogen activated protein kinases (erk/MAPK) are a group of proline-directed serine/threonine kinases that are activated by dual phosphorylation of conserved threonine and tyrosine residues within a characteristic **T X Y** peptide motif. The mitogen-activated kinases erk1 (MAPK1) and erk2 (MAPK2) acquire full enzymatic activity upon phosphorylation of both threonine and tyrosine residues within the sequence motif **T E Y**.

**Mab MAPK2-6H3** specifically recognizes the N-terminus of MAP kinase 2 (erk2).

### Related Products

**mab to MEK1 (pS218/222)**  
**mab to MEK2 (pS222/226)**  
#0174-100/MEK1/2-7E10  
**mab to MEK1 (N-terminus)**  
#0186-100/MEK1.10B1  
**mab to MEK1/2**  
#0150-100/MEK1/2-9G3  
**mab to MEK2 (N-terminus)**  
#0148-100/MEK2-8E8  
**mab to MKK3 (N-terminus)**  
#0166-100/MKK3-5F7  
**mab to MKK5 (N-terminus)**  
#0224-100/MKK5-14B5  
**mab to MKK7 (N-terminus)**  
#0189-100/MKK7-10F7  
**mab to MAPK 1/2 (pT-E-pY)**  
#0012-100/MAPK-12D4  
**mab to MAPK 2 (C-terminus)**  
#0011-100/MAPK-6G11  
**mab to MAPK 2 (internal sequence)**  
#0239-100/MAPK2-12A4  
**mab to MAPK7/erk5**  
#0223-100/MAPK7/erk5-12F2  
**mab to Fos (pS374)**  
#0118-100/Fos-34E4  
**mab to Fos (N-terminus)**  
#0122-100/Fos-8B5  
**mab to C-Raf (pS621)**  
#0102-100/C-Raf-6B4  
**mab to C-Raf**  
#0120-100/C-Raf-PBB-1

### Purification:

The antibody was purified from serum-free cell culture supernatant by subsequent thiophilic adsorption and size exclusion chromatography.

### Formulation:

lyophilized from 1 ml 2 x PBS / 0.09 % Na-azide / PEG and Sucrose.

### Reconstitution:

Reconstitute with 1 ml H<sub>2</sub>O (15 min, RT).

### Stability:

For long-term storage, freeze lyophilizate upon arrival (-20°C). Upon reconstitution, aliquote and freeze in liquid nitrogen; reconstituted antibody can be stored frozen at -80°C up to 1 year. Thaw aliquots at 37°C. Thawed aliquots may be stored at 4°C up to 3 months.

**Avoid repeated freeze / thaw cycles.**

### Positive Control:

#0811: Cell lysate from untreated HepG2 cells

### Immunoblotting:

0.5 µg/ml for HRPO/ECL detection

**Recommended blocking buffer:** Casein/Tween 20 based blocking and blot incubation buffer, e.g. nanoTools product #3031-500/CPPT or #3031-3000/CPPT.

### Immunoprecipitation:

ND

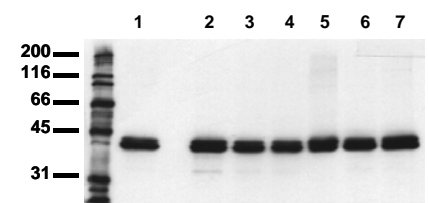
### Immunocytochemistry:

ND

### ELISA:

use at 0.05 µg/ml

**All products are supplied for research and investigational use only. Not for use in humans or laboratory animals.**



### Detection of endogenous MAPK2

Whole cell lysates of serum starved tumor cells (20.000 cells per lane) were applied to SDS-PAGE and transferred to a PVDF membrane. The immunoblot was probed with mab MAPK2-6H3 (0.5 µg/ml) for 1h at RT and developed by ECL (exp. time: 30 sec).

lane 1: A431; lane 2: SW480; lane 3: SW620; lane 4: HT29; lane 5: MCF7; lane 6: MDA231; lane 7: T47D