

Mouse Monoclonal Antibody to

MEK1(pS 218/222) / MEK2 (pS 222/226)

clone 7E10

Order No.: **0174-100/MEK1/2-7E10**

Size (µg) 100

Lot No.: 0174S



04/150307F

Isotype	Species Reactivity	Applications	Mol. Weight	Ref.Cell Line	Epitope	Immunogen
IgG1	human, mouse, dog	WB, ELISA	45 kDa	SW480	pSer 218/222 in MEK1 pSer 222/226 in MEK2 ... D - pS - M - A - N - pS - F...	phosphopeptide conjugated to KLH

Background and Specificity:

MEK (MAP Kinase Kinase) phosphorylates the MAP Kinase 1 and 2 on both threonine and tyrosine residues of the activation loop motif **TEY**. MEK1 and MEK2 are activated by phosphorylation of two serine residues (Ser 218/222 in MEK1 and Ser 222/226 in MEK2). These phosphorylation sites are substrates of the Raf family of kinases.

Mab MEK1/2-7E10 specifically recognizes MEK1 phosphorylated at serine 218/222 and MEK2 phosphorylated at serine 222/226 at 45 kDa. The antibody is suitable for Western Blot and ELISA applications.

Related Products

mab to MAPK 1/2 (pT-E-pY)

#0012-100/MAPK-12D4

mab to MAPK 2 (C-terminus)

#0011-100/MAPK2-6G11

mab to MAPK 2 (N-terminus)

#0178-100/MAPK2-6H3

mab to MAPK7/erk5

#0223-100/MAPK7/erk5-12F2

mab to MEK1 (N-terminus)

#0186-100/MEK1-10B1

mab to MEK1/2

#0150-100/MEK1/2-9G3

mab to MEK2 (N-terminus)

#0148-100/MEK2-8E8

mab to MKK3 (N-terminus)

#0166-100/MKK3-5F7

mab to MKK5 (N-terminus)

#0224-100/MKK5-14B5

mab to MKK7 (N-terminus)

#0189-100/MKK7-10F7

mab to Fos (pS374)

#0118-100/Fos-34E4

mab to Fos (N-terminus)

#0122-100/Fos-8B5

mab to C-Raf (pS621)

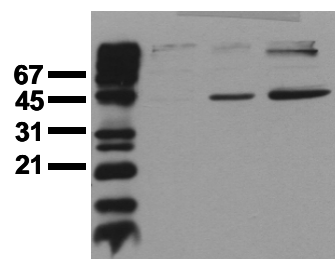
#0102-100/C-Raf-6B4

mab to C-Raf

#0120-100/C-Raf-PBB-1

Purification:	The antibody was purified from serum-free cell culture supernatant by subsequent thiophilic adsorption and size exclusion chromatography
Formulation:	lyophilized from 1 ml PBS / 0.09 % Na-azide / PEG and Sucrose.
Reconstitution:	Reconstitute with 1 ml H ₂ O (15 min, RT)
Stability:	For long-term storage, freeze lyophilizate upon arrival (-20°C). Upon reconstitution, aliquote and freeze in liquid nitrogen; reconstituted antibody can be stored frozen at -80°C up to 1 year. Thaw aliquots at 37°C. Thawed aliquots may be stored at 4°C up to 3 months. Avoid repeated freeze / thaw cycles.
Positive Control:	#0802: Cell lysate from pervanadate-treated SW480 cells
Immunoblotting:	0.5 µg/ml for HRPO/ECL detection Recommended blocking buffer: Casein/Tween 20 based blocking and blot incubation buffer, e.g. nanoTools product #3031-500/CPPT or #3031-3000/CPPT.
Immunoprecipitation:	ND
Immunocytochemistry:	ND
ELISA:	0.1 µg/ml (protein ELISA); capture ELISA: N.D.

co EGF VH



Phosphospecificity

Whole cell extracts of control (co), EGF stimulated (EGF) or pervanadate treated (VH) A549 tumor cells were applied to SDS-PAGE (ca 20.000 cells per lane) and transferred to a PVDF membrane. The immunoblot was probed with mab MEK1/2-7E10 (0.5 µg/ml) for 1h at RT and developed by ECL (exp. time: 30 sec).

All products are supplied for research and investigational use only. Not for use in humans or laboratory animals.