

## Mouse Monoclonal Antibody to

# Casein Kinase 1 epsilon (CK1 $\epsilon$ )

## clone 4D7

**Order No.:** 0172-100/CK1e-4D7  
**Size ( $\mu$ g)** 100  
**Lot No.:** 0172S



02/160307F

Isotype	Species Reactivity	Applications	Mol. Weight	Ref.Cell Line	Epitope	Immunogen
IgG1	human, mouse, rat, dog	WB, ELISA	45 kDa	A431	aa 355 - 380	peptide conjugated to hemocyanin

### Background and Specificity:

Casein kinases are operationally defined by their preferential utilization of acidic proteins such as caseins as substrates. It can also phosphorylate a large number of proteins and participates in Wnt signaling.

**Mab CK1e-4D7** specifically recognizes the epsilon isoform of CK1.

### Related Products

- mab to b-catenin (N-Term/Exon2)**  
#0003-100/b-CAT-7D11
- mab to b-catenin (Exon3)**  
#0004-100/b-CAT-9G2
- mab to b-catenin (Core)**  
#0005-100/b-CAT-9G10
- mab to b-catenin (C-Term/Exon14)**  
#0002-100/b-CAT-7D8
- mab to b-catenin (C-Term)**  
#0006-100/b-CAT-10H8
- mab to dephospho-b-catenin (aa35-50),**  
#0051-100/b-CAT-7A7
- mab to dephospho-b-catenin (aa27-37),**  
#0052-100/b-CAT-8E4
- mab to phospho-b-catenin (pY86)**  
#0123-100/b-CAT-24E1
- mab to phospho-b-catenin (pY654)**  
#0159-100/b-CAT-1B11

For monoclonal antibodies against alpha-catenin, LEF, TFF3, and M-Cadherin, please refer to our website at [www.nanotools.de](http://www.nanotools.de)

**Purification:** The antibody was purified from serum-free cell culture supernatant by subsequent thiophilic adsorption and size exclusion chromatography.

**Formulation:** lyophilized from 1 ml 2 x PBS / 0.09 % Na-azide / PEG and Sucrose.

**Reconstitution:** Reconstitute with 1 ml H<sub>2</sub>O (15 min, RT).

**Stability:** For long term storage, freeze lyophilizate upon arrival (-20°C). Upon reconstitution aliquote and freeze in liquid nitrogen; reconstituted antibody can be stored frozen at -80°C up to 1 year. Thaw aliquots at 37°C. Thawed aliquots may be stored at 4°C up to 3 months.

**Avoid repeated freeze/thaw cycles.**

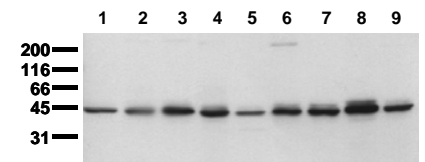
**Positive Control:** #0831: Cell lysate from untreated A431 cells

**Immunoblotting:** 0.5  $\mu$ g/ml for HRPO/ECL detection  
**Recommended blocking buffer:** Casein/Tween 20 based blocking and blot incubation buffer, e.g. nanoTools product #3031-500/CPPT or #3031-3000/CPPT.

**Immunoprecipitation:** ND

**Immunocytochemistry:** ND

**ELISA:** use at 0.1  $\mu$ g/ml



**Detection of endogenous Casein Kinase 1 epsilon**  
Whole cell lysates of serum starved tumor cells (20.000 cells per lane) were applied to SDS-PAGE and transferred to a PVDF membrane. The immunoblot was probed with mab CK1e-4D7 (0.5  $\mu$ g/ml) for 1h at RT and developed by ECL (exp. time: 30 sec).  
lane 1: HeLa; lane 2: HepG2; lane 3: HEK293; lane 4: SH-SY5Y; lane 5: MDCK; lane 6: PC12; lane 7: CMT 93; lane 8: Neuro 2A; lane 9: NIH 3T3

**All products are supplied for research and investigational use only. Not for use in humans or laboratory animals.**