

**MONKEY IgM whole molecule - 017-0107**
**Code:** 017-0107

**Size:** 250 µg

**Product Description:** MONKEY IgM whole molecule - 017-0107

**Concentration:** 1.0 mg/mL by UV absorbance at 280 nm

**PhysicalState:** Liquid (sterile filtered)

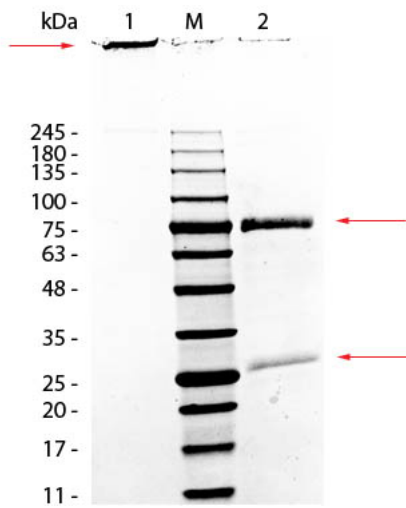
<b>Label</b>	Unconjugated
<b>Buffer</b>	0.1 M Tris Chloride, 0.5 M Sodium Chloride, pH 8.0
<b>Stabilizer</b>	None
<b>Preservative</b>	0.1% (w/v) Sodium Azide
<b>Storage Condition</b>	Store vial at 4° C prior to opening. This product is stable 4° C as an undiluted liquid. Dilute only prior to immediate use. For extended storage mix with an equal volume of glycerol, aliquot contents and freeze at -20° C or below. Avoid cycles of freezing and thawing.
<b>Synonyms</b>	Monkey Immunoglobulin M
<b>Application Note</b>	Monkey IgM whole molecule can be utilized as a control or standard reagent in SDS, Western Blotting, and ELISA experiments. Monkey IgM whole molecule is stable at 4° C prior to restoration. It is recommended to aliquot restored Monkey IgM whole molecule after adding equal parts glycerol for storage at -20° C for extended storage and to prevent repeated freeze-thaw cycles.
<b>Background</b>	Immunoglobulin M is the largest antibody isotype and the first to be secreted against an initial exposure to antigen. IgM is predominantly produced in the spleen. Formed from covalently linking 5 immunoglobulins together, the approximate molecular weight of IgM is 900kDa and possesses 10 binding sites (though due to the size of most antigens, not all sites are capable of binding at once). Due to this large size, IgM is typically isolated to the serum.
<b>Purity And Specificity</b>	Monkey IgM whole molecule was prepared from normal serum by a multi-step process which includes delipidation, selective precipitation and tandem molecular sieve chromatography followed by extensive dialysis against the buffer stated above. Monkey IgM whole molecule was assayed by immunoelectrophoresis resulted in a single precipitin arc against anti-Monkey Serum and anti-Monkey IgM (µ chain specific). No reaction was observed against anti-Monkey IgG F(c). Some light chain cross reactivity will occur with anti-Monkey IgG.
<b>Assay Dilutions</b>	User Optimized
<b>ELISA</b>	User Optimized
<b>Western Blot</b>	User Optimized
<b>Immunohistochemistry</b>	User Optimized
<b>Other Assays</b>	User Optimized
<b>Expiration</b>	Expiration date is one (1) year from date of opening.

**Related Products**

009-0007	HUMAN IgM (myeloma) whole molecule Rhodamine conjugated - 009-0007
010-0102	MOUSE IgG whole molecule - 010-0102
617-100-007	Anti-MONKEY IgM (mu chain) (GOAT) Antibody Rhodamine Conjugated - 617-100-007
MB-070	Blocking Buffer for Fluorescent Western Blotting - MB-070

**Images**

1	SDS-PAGE of Monkey IgM Whole Molecule. Lane 1: Monkey IgM, Non-Reduced. Lane 2: Monkey IgM, Reduced. Load: 1.0 µg per lane. Predicted/Observed size - Non-Reduced: 900 kDa (Pentamer), 900 kDa (Molecule larger than can pass through gel), Reduced: 78 and 25 kDa, 75 and 25 kDa.
---	--



### Disclaimer

This product is for research use only and is not intended for therapeutic or diagnostic applications. Please contact a technical service representative for more information. All products of animal origin manufactured by Rockland Immunochemicals are derived from starting materials of North American origin. Collection was performed in United States Department of Agriculture (USDA) inspected facilities and all materials have been inspected and certified to be free of disease and suitable for exportation. All properties listed are typical characteristics and are not specifications. All suggestions and data are offered in good faith but without guarantee as conditions and methods of use of our products are beyond our control. All claims must be made within 30 days following the date of delivery. The prospective user must determine the suitability of our materials before adopting them on a commercial scale. Suggested uses of our products are not recommendations to use our products in violation of any patent or as a license under any patent of Rockland Immunochemicals, Inc. If you require a commercial license to use this material and do not have one, then return this material, unopened to: Rockland Inc., P.O. BOX 5199, Limerick, Pennsylvania, USA.