

## Mouse Monoclonal Antibody to

# STAT3 (phospho-Ser 727)

## clone 23G5

**Order No.:** 0145-100/STAT3-23G5  
**Size (µg)** 100  
**Lot No.:** 0145S



03/080507F

Isotype	Species Reactivity	Applications	Mol. Weight	Ref. Cell Line	Epitope	Immunogen
IgG1	human, mouse, rat, dog	WB, ELISA, IHC	92 kDa	HepG2	phosphoserine 727 ..L P M pS F R T..	phosphopeptide conjugated to KLH

### Background and Specificity:

The STAT proteins serve as both cytoplasmic signal transducers and nuclear activators of transcription. STATs are mediators involved in cytokine signalling. In response to a specific cytokine signal, STAT proteins are phosphorylated on conserved tyrosine residues. Phosphorylated STAT proteins dimerize via their SH2 domains and move to the nucleus. The STAT dimers bind to specific DNA elements resulting in transcriptional regulation of downstream target genes.

Besides tyrosine phosphorylation, STAT3 activity is regulated by serine phosphorylation at serine 727. Recent reports indicate that both MAP kinase and SAP kinase induce phosphorylation at serine 727.

**Mab STAT3-23G5** specifically recognizes STAT3 phosphorylated at Ser 727. The antibody does not crossreact with the non-phosphorylated form of STAT3 nor with unrelated serine-phosphorylated proteins. Mab STAT3-23G5 is suitable for Western blot and ELISA applications.

### Related Products

#### mab to STAT1 (phospho-Ser 727)

#0176-100/STAT1-12C5

#### mab to STAT3 (phospho-Tyr 705)

#0036-100/STAT3-9E12

#### mab to STAT5 A/B (phospho-Tyr 695/699)

#0121-100/STAT5-5G4

#### mab to STAT6 (phosph-Tyr 641)

#0079-100/STAT6-16E12

#### mab to STAT6 (aa 630-650)

#0063-100/STAT6-8C12

<b>Purification:</b>	The antibody was purified from serum-free cell culture supernatant by subsequent thiophilic adsorption and size exclusion chromatography.
<b>Formulation:</b>	lyophilized from 1 ml 2 x PBS / 0.09 % Na-azide / PEG and Sucrose.
<b>Reconstitution:</b>	Reconstitute with 1 ml H <sub>2</sub> O (15 min, RT).
<b>Stability:</b>	For long-term storage, freeze lyophilizate upon arrival (-20°C). Upon reconstitution, aliquote and freeze in liquid nitrogen; reconstituted antibody can be stored frozen at -80°C up to 1 year. Thaw aliquots at 37°C. Thawed aliquots may be stored at 4°C up to 3 months.

### Avoid repeated freeze / thaw cycles.

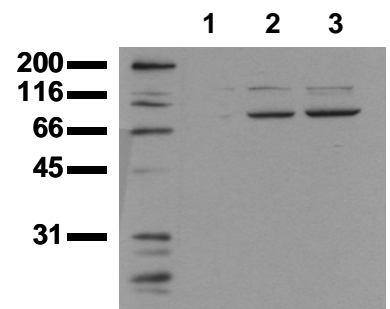
<b>Positive Control:</b>	#0812: Cell lysate from pervanadate-treated HepG2 cells
<b>Immunoblotting:</b>	0.5 µg/ml for HRPO/ECL detection <b>Recommended blocking buffer:</b> Casein/Tween 20 based blocking and blot incubation buffer, e.g. nanoTools product #3031-500/CPPT or #3031-3000/CPPT.

**Immunoprecipitation:** ND

**Immunocytochemistry:** ND

**ELISA:** use at 0.1 µg/ml

**All products are supplied for research and investigational use only. Not for use in humans or laboratory animals.**



### Phosphospecificity

Whole cell extracts of control (1), EGF stimulated (2) or pervanadate treated (3) A 431 tumor cells were applied to SDS-PAGE (ca 20.000 cells per lane) and transferred to a PVDF membrane. The immunoblot was probed with mab STAT3-23G5 (0.5 µg/ ml) for 1h at RT and developed by ECL (exp. time: 30 sec).