

Mouse Monoclonal Antibody to

hsp27 (phospho-Ser 82)

clone 5B9

Order No.: 0117-100/hsp27-5B9

Size (µg) 100

Lot No.: 0117S



03/080507F

Isotype	Species Reactivity	Applications	Mol. Weight	Ref.Cell Line	Epitope	Immunogen
IgG2a	human, mouse, rat, dog	WB, IHC	27 kDa	HepG2	Phosphoserine 82 R Q L pS S G V	phosphopeptide conjugated to KLH

Background and Specificity:

The small heat shock protein hsp27 is constitutively expressed in most cell lines. The expression level is increased in response to environmental stress. Activation of the p38 kinases results in subsequent activation of MAPKAP2 that phosphorylates hsp27 at Ser15, Ser78 and Ser82.

Mab hsp27-5B9 specifically interacts with hsp27 phosphorylated at serine 82 and does not crossreact with the non-phosphorylated hsp27 nor with unrelated serine-phosphorylated proteins. The antibody is suitable for Western blot applications.

Related Products

biotinylated mab to hsp27 (phospho-Ser 82)
#0117-100BIOTIN/hsp27-5B9

Purification:	The antibody was purified from serum-free cell culture supernatant by subsequent thiophilic adsorption and size exclusion chromatography.
Formulation:	lyophilized from 1 ml PBS / 0.09 % Na-azide / PEG and Sucrose.
Reconstitution:	Reconstitute with 1 ml H ₂ O (15 min, RT).
Stability:	For long-term storage, freeze lyophilizate upon arrival (-20°C). Upon reconstitution, aliquote and freeze in liquid nitrogen; reconstituted antibody can be stored frozen at -80°C up to 1 year. Thaw aliquots at 37°C. Thawed aliquots may be stored at 4°C up to 3 months.

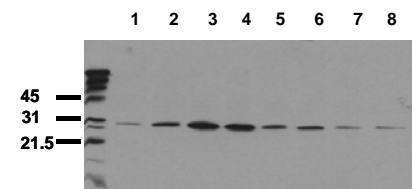
Avoid repeated freeze / thaw cycles.

Positive Control:	#0813: Cell lysate from EGF-treated HepG2 cells
Immunoblotting:	0.5 µg/ml for HRPO/ECL detection Recommended blocking buffer: Casein/Tween 20 based blocking and blot incubation buffer, e.g. nanoTools product #3031-500/CPPT or #3031-3000/CPPT.

Immunoprecipitation: ND

Immunocytochemistry: ND

ELISA: ND



hsp 27 activation

Serum starved HepG2 cells were incubated with 10 ng/ml EGF for the indicated times. Whole cell lysates were prepared with lysis buffer V19 and separated by SDS-PAGE (ca 20.000 cells/lane). Immunoblots were probed with mab hsp27-5B9 (0.5 µg/ ml) for 1h at RT and developed by ECL (exp. time: 30 sec).

lane 1: control; lane 2: 5 min EGF; lane 3: 15 min EGF; lane 4: 30 min EGF; lane 5: 1h EGF; lane 6: 2h EGF; lane 7: 4h EGF; lane 8: 8h EGF

All products are supplied for research and investigational use only. Not for use in humans or laboratory animals.