

**RABBIT IgG whole molecule Alkaline Phosphatase conjugated - 011-0502**
**Code:** 011-0502

**Size:** 1 mg

**Product Description:** RABBIT IgG whole molecule Alkaline Phosphatase conjugated - 011-0502

**Concentration:** 1.0 mg/mL by UV absorbance at 280 nm

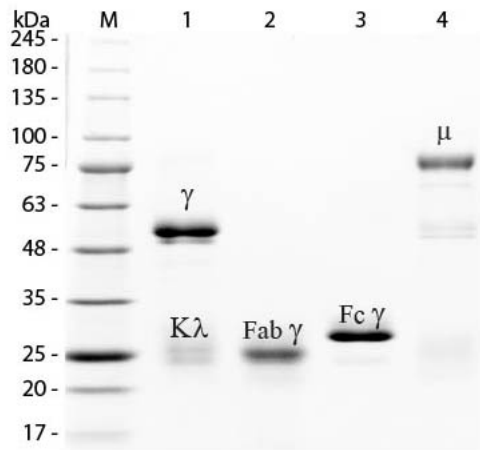
**PhysicalState:** Liquid (sterile filtered)

<b>Label</b>	Alkaline Phosphatase (Calf Intestine)
<b>Buffer</b>	0.05 M Tris Chloride, 0.15M Sodium Chloride, 0.001M Magnesium Chloride, 0.0001M Zinc Chloride, 50% (v/v) Glycerol; pH 8.0
<b>Stabilizer</b>	10 mg/mL Bovine Serum Albumin (BSA) - Immunoglobulin and Protease free
<b>Preservative</b>	0.01% (w/v) Sodium Azide
<b>Storage Condition</b>	Store vial at 4° C before opening. DO NOT FREEZE. This product is stable at 4° C as an undiluted liquid. Dilute only prior to immediate use. Freezing alkaline phosphatase conjugates will result in a substantial loss of enzymatic activity.
<b>Synonyms</b>	Rabbit IgG alkaline phosphatase conjugation, alk phos conjugated Rabbit IgG whole molecule
<b>Application Note</b>	Rabbit IgG alk phos conjugated whole molecule suitable for ELISA, western blot, and immunohistochemistry, as well as other assays requiring lot-to-lot consistency.
<b>Background</b>	Rabbit IgG alk phos conjugated whole molecule - secreted as part of the adaptive immune response by plasma B cells, immunoglobulin G constitutes 75% of serum immunoglobulins. Immunoglobulin G binds to viruses, bacteria, as well as fungi and facilitates their destruction or neutralization via agglutination (and thereby immobilizing them), activation of the compliment cascade, and opsinization for phagocytosis. The whole IgG molecule possesses both the F(c) region, recognized by high-affinity Fc receptor proteins, as well as the F(ab) region possessing the epitope-recognition site. Both heavy and light chains of the antibody molecule are present.
<b>Purity And Specificity</b>	This product was prepared from normal serum by delipidation, salt fractionation, ion exchange chromatography followed by conjugation and extensive dialysis against the buffer stated above. Assay by immunoelectrophoresis resulted in a single precipitin arc against anti-Rabbit IgG, anti-Rabbit Serum and anti-Alkaline Phosphatase (calf intestine).
<b>Assay Dilutions</b>	User Optimized
<b>Other Assays</b>	User Optimized
<b>Expiration</b>	Expiration date is one (1) year from date of opening.
<b>Related Products</b>	

010-0102	MOUSE IgG whole molecule - 010-0102
610-4302	Anti-MOUSE IgG (H&L) (RABBIT) Antibody Peroxidase Conjugated - 610-4302
611-1302	Anti-RABBIT IgG (H&L) (GOAT) Antibody Peroxidase Conjugated - 611-1302
BSA-50	BOVINE SERUM ALBUMIN - Fraction V (Immunoglobulin and Protease Free) - BSA-50

**Images**

1	SDS-PAGE of Rabbit IgG Whole Molecule Alkaline Phosphatase Conjugated (p/n 011-0502). Lane M: 3 µL Opal Prestained Marker (p/n MB-210-0500). Lane 1: Reduced Rabbit IgG Whole Molecule Alkaline Phosphatase Conjugated (p/n 011-0502). Lane 2: Reduced Rabbit IgG F(ab) Fragment (p/n 011-0105). Lane 3: Reduced Rabbit IgG F(c) Fragment (p/n 011-0103). Lane 4: Reduced Rabbit IgM Whole Molecule (p/n 011-0107). Load: 1 µg for F(ab) and F(c); 1.2 µg for IgG and IgM. Predicted/Observed size: IgG at 50 and 25 kDa; F(c) at 25 kDa; F(ab) at 25 kDa; IgM at 70 and 23 kDa. Observed F(c) Fragment migrates slightly higher.
---	---



### Disclaimer

This product is for research use only and is not intended for therapeutic or diagnostic applications. Please contact a technical service representative for more information. All products of animal origin manufactured by Rockland Immunochemicals are derived from starting materials of North American origin. Collection was performed in United States Department of Agriculture (USDA) inspected facilities and all materials have been inspected and certified to be free of disease and suitable for exportation. All properties listed are typical characteristics and are not specifications. All suggestions and data are offered in good faith but without guarantee as conditions and methods of use of our products are beyond our control. All claims must be made within 30 days following the date of delivery. The prospective user must determine the suitability of our materials before adopting them on a commercial scale. Suggested uses of our products are not recommendations to use our products in violation of any patent or as a license under any patent of Rockland Immunochemicals, Inc. If you require a commercial license to use this material and do not have one, then return this material, unopened to: Rockland Inc., P.O. BOX 5199, Limerick, Pennsylvania, USA.