

RABBIT IgG whole molecule (BULK ORDER) - 011-0102
Code: 011-0102

Size: 50 mg

Product Description: RABBIT IgG whole molecule (BULK ORDER) - 011-0102

Concentration: 10.0 mg/mL by UV absorbance at 280 nm

PhysicalState: Lyophilized

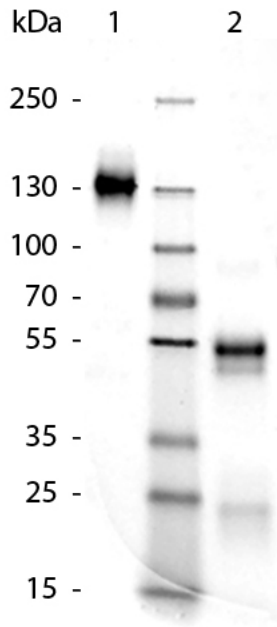
Label	Unconjugated
Buffer	0.02 M Potassium Phosphate, 0.15 M Sodium Chloride, pH 7.2
Reconstitution Volume	5.0 mL
Reconstitution Buffer	Restore with deionized water (or equivalent)
Preservative	0.01% (w/v) Sodium Azide
Storage Condition	Store vial at 4° C prior to restoration. For extended storage aliquot contents and freeze at -20° C or below. Avoid cycles of freezing and thawing. Centrifuge product if not completely clear after standing at room temperature. Rabbit IgG whole molecule is stable for several weeks at 4° C as an undiluted liquid. Dilute only prior to immediate use.
Synonyms	Rabbit immunoglobulin G
Application Note	Rabbit IgG whole molecule can be utilized as a control or standard reagent in Western Blotting and ELISA experiments.
Background	Secreted as part of the adaptive immune response by plasma B cells, immunoglobulin G constitutes 75% of serum immunoglobulins. Immunoglobulin G binds to viruses, bacteria, as well as fungi and facilitates their destruction or neutralization via agglutination (and thereby immobilizing them), activation of the compliment cascade, and opsinization for phagocytosis. The whole IgG molecule possesses both the F(c) region, recognized by high-afinity Fc receptor proteins, as well as the F(ab) region possessing the epitope-recognition site. Both heavy and light chains of the antibody molecule are present.
Purity And Specificity	Rabbit IgG whole molecular was prepared from normal serum by a multi-step process which includes delipidation, salt fractionation and ion exchange chromatography followed by extensive dialysis against the buffer stated above. Rabbit IgG whole molecular was assayed by immunoelectrophoresis resulted in a single precipitin arc against anti-Rabbit IgG and anti-Rabbit Serum.
Assay Dilutions	User Optimized
ELISA	User Optimized
Western Blot	User Optimized
Immunohistochemistry	User Optimized
Other Assays	User Optimized
Expiration	Expiration date is one (1) year from date of opening.

Related Products

006-0050	GUINEA PIG IgG whole molecule Agarose Conjugated - 006-0050
010-0102	MOUSE IgG whole molecule - 010-0102
012-0102	RAT IgG whole molecule - 012-0102
611-1302	Anti-RABBIT IgG (H&L) (GOAT) Antibody Peroxidase Conjugated - 611-1302

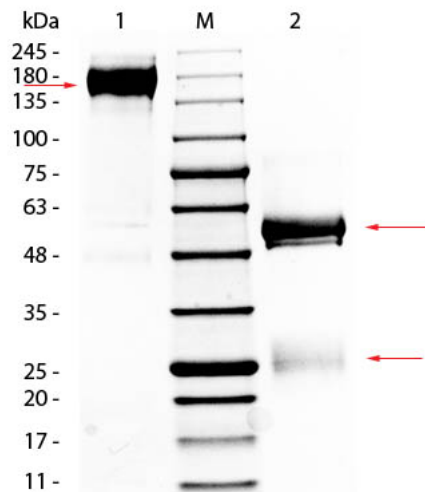
Images

1	SDS-Page of Rabbit IgG.Lane 1: Rabbit IgG - Non-Reduced.Lane 2: Rabbit IgG - Reduced.Load: 1.0 ug per lane.Predicted/Observed Size: Non-reduced - 130 kDa, Reduced - 55 and 28 kDa for Rabbit IgG.Other Band(s): None.
---	--



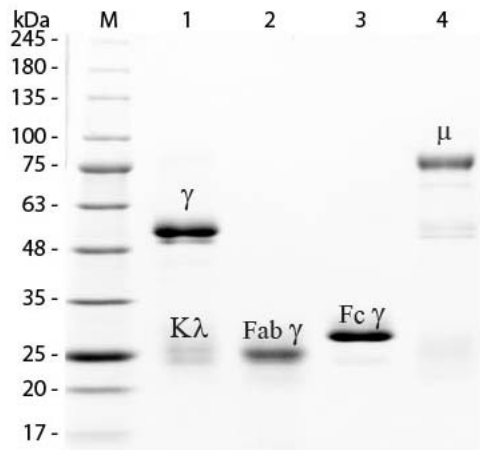
2

SDS-PAGE of Rabbit IgG Whole Molecule. Lane 1: Non-reduced Rabbit IgG Whole Molecule. Lane 2: 5µL OPAL Pre-stained Marker (MB-210-0500). Lane 3: Reduced Rabbit IgG Whole Molecule. Load: 1µg per lane. Predicted/Observed size: Non-reduced at 150-170 kDa , Reduced at 55, 25 kDa.



3

SDS-PAGE of Rabbit IgG Whole Molecule (BULK ORDER) (p/n 011-0102). Lane M: 3 µL Opal Prestained Marker (p/n MB-210-0500). Lane 1: Reduced Rabbit IgG Whole Molecule (BULK ORDER) (p/n 011-0102). Lane 2: Reduced Rabbit IgG F(ab) Fragment (p/n 011-0105). Lane 3: Reduced Rabbit IgG F(c) Fragment (p/n 011-0103). Lane 4: Reduced Rabbit IgM Whole Molecule (p/n 011-0107). Load: 1 µg for F(ab) and F(c); 1.2 µg for IgG and IgM. Predicted/Observed size: IgG at 50 and 25 kDa; F(ab) at 25 kDa; F(c) at 25 kDa; IgM at 70 and 23 kDa. Observed F(c) Fragment migrates slightly higher.



Disclaimer

This product is for research use only and is not intended for therapeutic or diagnostic applications. Please contact a technical service representative for more information. All products of animal origin manufactured by Rockland Immunochemicals are derived from starting materials of North American origin. Collection was performed in United States Department of Agriculture (USDA) inspected facilities and all materials have been inspected and certified to be free of disease and suitable for exportation. All properties listed are typical characteristics and are not specifications. All suggestions and data are offered in good faith but without guarantee as conditions and methods of use of our products are beyond our control. All claims must be made within 30 days following the date of delivery. The prospective user must determine the suitability of our materials before adopting them on a commercial scale. Suggested uses of our products are not recommendations to use our products in violation of any patent or as a license under any patent of Rockland Immunochemicals, Inc. If you require a commercial license to use this material and do not have one, then return this material, unopened to: Rockland Inc., P.O. BOX 5199, Limerick, Pennsylvania, USA.