

Mouse Monoclonal Antibody to

M-Cadherin (mouse)

clone 12G4

Order No.: 0106-100/MCAD-12G4

Size (µg) 100

Lot No.: 0106S



02/140307F

Isotype	Species Reactivity	Applications	Mol. Weight	Ref.Cell Line	Epitope	Immunogen
IgG1	mouse	WB, ELISA, ICC	130 kDa	none	extracellular domain	recombinant extracellular domain of murine M-cadherin

Background and Specificity:

Cadherins are a family of transmembrane glycoproteins that play a key role in calcium-dependent cell-cell adhesion. Several members of the cadherin family have been identified so far, including E- (epithelial), P- (placental), N- (neuronal), and M- (muscle) cadherin. M-cadherin is expressed in myoblasts and might be involved in skeletal muscle cell differentiation.

Mab MCAD-12G4 is directed against the extracellular domain of **murine** M-cadherin (MW: 130 kDa) and can be used for Western blot, ELISA and immunocytochemistry applications.

Related Products

mab to human M-cadherin

#0124-100/MCAD-21G4

mab to E-cadherin

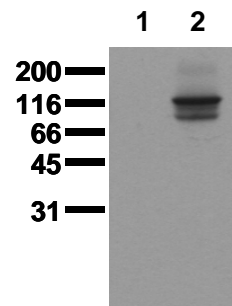
#0234-100/ECAD-22F8

mab to N-cadherin

#0235-100/NCAD-7E9

For monoclonal antibodies against beta-catenin, TFF3, and LEF, please refer to our website at www.nanotools.de

Purification:	The antibody was purified from serum-free cell culture supernatant by subsequent thiophilic adsorption and size exclusion chromatography.
Formulation:	lyophilized from 1 ml 2 x PBS / 0.09 % Na-azide / PEG and Sucrose.
Reconstitution:	Reconstitute with 1 ml H ₂ O (15 min, RT).
Stability:	For long-term storage, freeze lyophilizate upon arrival (-20°C). Upon reconstitution, aliquote and freeze in liquid nitrogen; reconstituted antibody can be stored frozen at -80°C up to 1 year. Thaw aliquots at 37°C. Thawed aliquots may be stored at 4°C up to 3 months.
	Avoid repeated freeze / thaw cycles.
Positive Control:	none
Immunoblotting:	0.5 µg/ml for HRPO/ECL detection. Recommended blocking buffer: Casein/Tween 20 based blocking and blot incubation buffer, e.g. nanoTools product #3031-500/CPPT or #3031-3000/CPPT.
Immunoprecipitation:	ND
Immunocytochemistry:	5 µg/ml (Immunofluorescence)
ELISA:	use at 0.05 µg/ml



Detection of M - cadherin

Whole cell lysates were applied to SDS-PAGE and transferred to a PVDF membrane. The immunoblot was probed with mab MCAD-12G4 (0.5 µg/ ml) for 1h at RT and developed by ECL (exp. time: 30 sec).

lane 1: 10T1/2 ; lane 2: mouse M-cadherin overexpressed in 10T1/2 cells

All products are supplied for research and investigational use only. Not for use in humans or laboratory animals.